

Bin Collection Calendar 2024/2025 & FOGO How-to Guide

 FOGO starts on 11 November 2024

 Public Holidays

Garbage collection:
WEEKLY

FOGO collection:
WEEKLY

Recycling collection:
FORTNIGHTLY

 Area 1

 Area 2

Scan to find out your area for bin collection



2024 NOVEMBER

| M | T | W | T | F | S | S |
|----|----|----|----|----|----|----|
| | | | | 1 | 2 | 3 |
| 4 | 5 | 6 | 7 | 8 | 9 | 10 |
| 11 | 12 | 13 | 14 | 15 | 16 | 17 |
| 18 | 19 | 20 | 21 | 22 | 23 | 24 |
| 25 | 26 | 27 | 28 | 29 | 30 | |

DECEMBER

| M | T | W | T | F | S | S |
|----|----|----|----|----|----|----|
| | | | | | | 1 |
| 2 | 3 | 4 | 5 | 6 | 7 | 8 |
| 9 | 10 | 11 | 12 | 13 | 14 | 15 |
| 16 | 17 | 18 | 19 | 20 | 21 | 22 |
| 23 | 24 | 25 | 26 | 27 | 28 | 29 |
| 30 | 31 | | | | | |

2025 JANUARY

| M | T | W | T | F | S | S |
|----|----|----|----|----|----|----|
| | | 1 | 2 | 3 | 4 | 5 |
| 6 | 7 | 8 | 9 | 10 | 11 | 12 |
| 13 | 14 | 15 | 16 | 17 | 18 | 19 |
| 20 | 21 | 22 | 23 | 24 | 25 | 26 |
| 27 | 28 | 29 | 30 | 31 | | |

FEBRUARY

| M | T | W | T | F | S | S |
|----|----|----|----|----|----|----|
| | | | | | 1 | 2 |
| 3 | 4 | 5 | 6 | 7 | 8 | 9 |
| 10 | 11 | 12 | 13 | 14 | 15 | 16 |
| 17 | 18 | 19 | 20 | 21 | 22 | 23 |
| 24 | 25 | 26 | 27 | 28 | | |

MARCH

| M | T | W | T | F | S | S |
|----|----|----|----|----|----|----|
| | | | | | 1 | 2 |
| 3 | 4 | 5 | 6 | 7 | 8 | 9 |
| 10 | 11 | 12 | 13 | 14 | 15 | 16 |
| 17 | 18 | 19 | 20 | 21 | 22 | 23 |
| 24 | 25 | 26 | 27 | 28 | 29 | 30 |
| 31 | | | | | | |

APRIL

| M | T | W | T | F | S | S |
|----|----|----|----|----|----|----|
| | 1 | 2 | 3 | 4 | 5 | 6 |
| 7 | 8 | 9 | 10 | 11 | 12 | 13 |
| 14 | 15 | 16 | 17 | 18 | 19 | 20 |
| 21 | 22 | 23 | 24 | 25 | 26 | 27 |
| 28 | 29 | 30 | | | | |

MAY

| M | T | W | T | F | S | S |
|----|----|----|----|----|----|----|
| | | | 1 | 2 | 3 | 4 |
| 5 | 6 | 7 | 8 | 9 | 10 | 11 |
| 12 | 13 | 14 | 15 | 16 | 17 | 18 |
| 19 | 20 | 21 | 22 | 23 | 24 | 25 |
| 26 | 27 | 28 | 29 | 30 | 31 | |

JUNE

| M | T | W | T | F | S | S |
|----|----|----|----|----|----|----|
| | | | | | | 1 |
| 2 | 3 | 4 | 5 | 6 | 7 | 8 |
| 9 | 10 | 11 | 12 | 13 | 14 | 15 |
| 16 | 17 | 18 | 19 | 20 | 21 | 22 |
| 23 | 24 | 25 | 26 | 27 | 28 | 29 |
| 30 | | | | | | |

JULY

| M | T | W | T | F | S | S |
|----|----|----|----|----|----|----|
| | 1 | 2 | 3 | 4 | 5 | 6 |
| 7 | 8 | 9 | 10 | 11 | 12 | 13 |
| 14 | 15 | 16 | 17 | 18 | 19 | 20 |
| 21 | 22 | 23 | 24 | 25 | 26 | 27 |
| 28 | 29 | 30 | 31 | | | |

AUGUST

| M | T | W | T | F | S | S |
|----|----|----|----|----|----|----|
| | | | | | 1 | 2 |
| 3 | 4 | 5 | 6 | 7 | 8 | 9 |
| 10 | 11 | 12 | 13 | 14 | 15 | 16 |
| 17 | 18 | 19 | 20 | 21 | 22 | 23 |
| 24 | 25 | 26 | 27 | 28 | 29 | 30 |
| 31 | | | | | | |

SEPTEMBER

| M | T | W | T | F | S | S |
|----|----|----|----|----|----|----|
| 1 | 2 | 3 | 4 | 5 | 6 | 7 |
| 8 | 9 | 10 | 11 | 12 | 13 | 14 |
| 15 | 16 | 17 | 18 | 19 | 20 | 21 |
| 22 | 23 | 24 | 25 | 26 | 27 | 28 |
| 29 | 30 | | | | | |

OCTOBER

| M | T | W | T | F | S | S |
|----|----|----|----|----|----|----|
| | | | 1 | 2 | 3 | 4 |
| 5 | 6 | 7 | 8 | 9 | 10 | 11 |
| 12 | 13 | 14 | 15 | 16 | 17 | 18 |
| 19 | 20 | 21 | 22 | 23 | 24 | 25 |
| 26 | 27 | 28 | 29 | 30 | 31 | |

NOVEMBER

| M | T | W | T | F | S | S |
|----|----|----|----|----|----|----|
| | | | | | 1 | 2 |
| 3 | 4 | 5 | 6 | 7 | 8 | 9 |
| 10 | 11 | 12 | 13 | 14 | 15 | 16 |
| 17 | 18 | 19 | 20 | 21 | 22 | 23 |
| 24 | 25 | 26 | 27 | 28 | 29 | 30 |

DECEMBER

| M | T | W | T | F | S | S |
|----|----|----|----|----|----|----|
| 1 | 2 | 3 | 4 | 5 | 6 | 7 |
| 8 | 9 | 10 | 11 | 12 | 13 | 14 |
| 15 | 16 | 17 | 18 | 19 | 20 | 21 |
| 22 | 23 | 24 | 25 | 26 | 27 | 28 |
| 29 | 30 | 31 | | | | |



GARBAGE

NO MORE FOOD WASTE



Plastic bags & soft plastics



Nappies



Disposable coffee cups



Polystyrene foam



Paper towels & tissues



Pet waste

FOGO

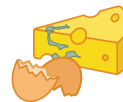
Food Organics and Garden Organics



Meat, seafood & bones



Bread, pasta & rice



Eggs & dairy



Fruit & vegetables, takeaway & leftovers



Loose tea & coffee grounds



Grass clippings



Prunings, leaves & flowers



Twigs & branches



AS4736 certified compostable liners

RECYCLING



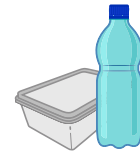
ONLY



Paper & cardboard (flatten)



Steel, aerosol & aluminium cans



Plastic bottles & containers



Glass bottles & jars

ITEMS NOT ACCEPTED IN ANY OF THE BINS



NO batteries



NO gas bottles



NO medical waste



NO chemical waste

NOT ACCEPTED IN FOGO



NO plastic, biodegradable or compostable bags that are not AS4736-certified



NO paper & cardboard



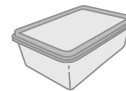
NO paper towels & tissues



NO pet waste



NO tea bags & coffee pods



NO food containers & cling wrap

NOT ACCEPTED IN RECYCLING



NO plastic bags & soft plastics



NO clothing & textiles



NO bagged recyclables



NO coffee cups

Refer to the **WASTE THAT CANNOT GO INTO THE BINS** page for safe disposal options

Check out **Recycling Near You** for hard to recycle items

Scan here to find out more



FOGO (Food Organics and Garden Organics) is a new way we can recycle our household food scraps every week from **11 November, 2024.**

1

Line your kitchen caddy with a compostable caddy liner. You can also go without a liner if you prefer.



2

Place food scraps into your kitchen caddy (anything you can eat or grow). Not sure? Have a look at our comprehensive A-Z list by scanning the QR code below.



3

Empty the caddy out every 2-3 days to your green lid FOGO bin which now takes both food waste and garden waste.



4

Put your green lid FOGO bin kerbside weekly on bin night with your red lid garbage bin.



NEED MORE COMPOSTABLE LINERS?

Compostable liners will be delivered to you every six months. If you run out, compostable liners can be picked up at your local Parramatta library in between deliveries. You can also purchase your own liners but they need to meet AS4736 standard.

Scan here for A to Z FOGO list



Tips to keep your caddy & bin smell and pest free

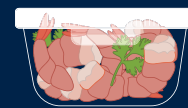
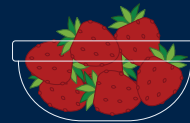
- Empty your caddy every 2-3 days
- Wash the FOGO caddy & hose out bin regularly
- Store in a shaded area
- Cover scraps with spent coffee grounds, leaves and grass clipping
- Deodorise with natural ingredients like bicarb soda
- Keep the lid closed
- Freeze meat, bones, and dairy food waste until bin night



Want to do better than FOGO? Reduce food waste!

- Plan your meals
- Check your pantry and fridge regularly and use food before it spoils
- Shop with a list
- Portion your meals
- Eat/freeze leftovers
- Check expiry dates

Scan the QR code below for more tips.



Help everyone get the right thing in the FOGO bin!

Incorrect materials (e.g. plastic bags or packaging) in the FOGO bin will contaminate and impact the quality of the final compost and the health of the plants using it.

What you can do to help?

- Take time to get used to the new waste sort rules and create good habits
- Talk to your family and community about FOGO
- Scan the QR code below to test your knowledge on FOGO

Council will be inspecting bins and working with residents to get FOGO right together. Contact us for support.



Scan here for FOGO quiz

Bulky waste clean-up

STEPS

- 1 Plan and book
cityofparramatta.nsw.gov.au/waste
1300 580 811
- 2 Present waste for collection the night before your booking date

Don't get caught out!

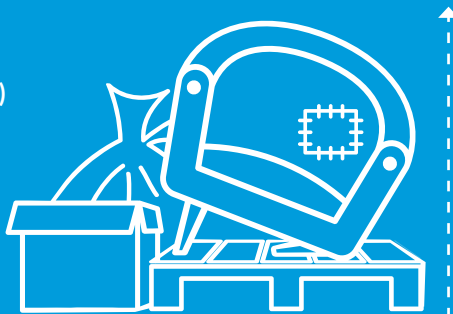
Putting items on the kerb without booking or earlier than your booked date is **Illegal Dumping** and can result in fines in excess of \$500.



Size restrictions:

2 cubic metres
(about 1 box trailer load)
per clean-up

4 free clean-ups
per year



2 CUBIC METRES ←



Accepted items

- Mattresses
- Furniture



Not accepted

- Mirrors and sheet glass
- Hazardous waste
- Building materials

Scan the QR code for a full list of accepted items.

E-waste and Chemical Waste

Pick up

MOBILE COMMUNITY RECYCLING SERVICE

Booking via
problemwaste.com.au
1300 617 058



TVs



Computers



Gas bottles



Paint



Car batteries



Light globes

Drop-off

DATES & TIME

Scan the QR code for dates.
Items can only be dropped
off on the nominated dates.

LOCATION

City of Parramatta,
316 Victoria Road, Rydalmere
(behind Bunnings)

CHEMICAL CLEAN-UP

- Solvents, cleaners
and poisons
- Other household chemicals

E-WASTE DROP OFF

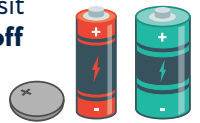
- Televisions, VCR
and DVD players
- Computers, laptops,
and phones
- Small household
appliances

Household batteries

Take your batteries to:

- local supermarkets and stores
include Woolworths, Coles, Aldi,
Bunnings and Ikea
- City of Parramatta Council
branch libraries

For more locations, visit
bcycle.com.au/drop-off



Sharps

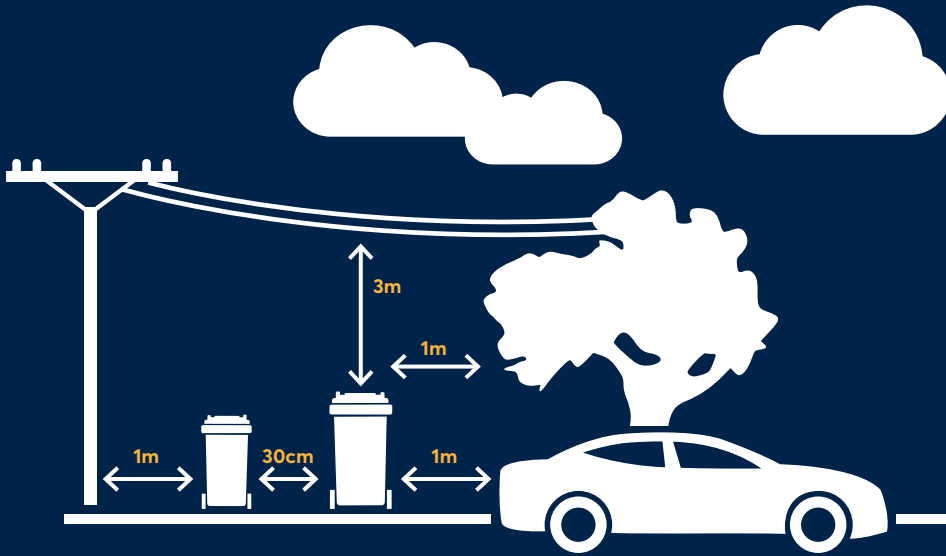
Public sharp disposal bins:

- Public hospitals
- Participating
pharmacies in the local
government area



Scan here to find out more

Correct bin presentation



Keep our neighbourhood clean & tidy

Report

Litter from vehicle:

reportlitter.epa.nsw.gov.au

Abandoned Trolleys

Woolworths: trolleytracker.com.au

or call 1800 641 497

Coles: Online or call 1800 876 553

Illegal dumping: 1300 617 058

Volunteering cleanup.org.au

Local Waste & Recycling Centres

(fees may apply)

Homebush Bay

Old Hill Link 02 8645 4304

Seven Hills

29 Powers Road 137 373

North Ryde

145 Wicks Road 02 8645 4304

Changes to the size of the red garbage bin?

You can opt in for a larger or smaller red bin at any point to accommodate your household's waste needs.

Only property owners can make the application. Tenants must refer any requests to the property owner as it has associated rate charges. The body corporate or strata manager can also enquire about changes by contacting Council.

Scan the QR code below to apply.

2024-2025 Domestic Waste Management Annual Charge for Ratepayers

| Red Lid Garbage Bin Size | Annual Cost | Reference |
|--------------------------|-------------|---|
| 80L | \$457.85 | Cost saving of \$42.69 |
| 140L | \$500.54 | No additional free - cost remains the same as is currently being paid |
| 240L | \$754.69 | Additional cost of \$254.15 on what you currently pay (based on existing standard 140L red lid bin service) |

All information stated in this calendar is correct at the time of printing and is subject to changes. Check the website for updates.

Contacting Council

Online services

Scan the QR code below to submit requests for

- missed collection
- issue with the bins

Email

council@cityofparramatta.nsw.gov.au

Phone

1300 617 058

In-person

PHIVE, 5 Parramatta Square,
Parramatta

Monday to Thursday: 9am- 8pm

Friday to Sunday: 9am-5pm



Scan here to find out more

If you require assistance with translation, please call us on **1300 617 058**. For non-English speakers, phone interpretation services are available via **TIS National** on **131 450**.

Did you know?

Our website can translate into Arabic, Chinese, Hindi, Korean and Farsi. Look for the translation button.



KOREAN

본 소식지와 관련해 통역 지원이 필요하신 경우, TIS (131 450)에 전화하여 Parramatta Customer Service (9806 5050)를 연결해 달라고 요청하시면 됩니다. 업무시간은 월요일에서 금요일, 오전 8시 30분부터 오후 5시까지입니다.

ARABIC

إذا كنت بحاجة للمساعدة في ترجمة هذه النشرة، اتصل بـ TIS على الرقم 131 450 واطلب منهم الاتصال نيابة عنك بخدمة زبائن باراماتا على الرقم 9806 5050 من الإثنين إلى الجمعة بين الساعة 8:30 صباحاً و 5:00 مساءً.

CHINESE

如果你需要翻译协助阅读这份新闻简报，请联系 TIS，电话131 450，要求他们代表你接通巴拉玛打市议会顾客服务处，电话 9806 5050。顾客服务处的工作时间是每星期一至星期五，上午8:30至下午5:00。

HINDI

यदि आपको यह सूचना-पत्र समझने में सहायता चाहिए तो कृपया TIS को 131 450 पर फ़ोन करें और उनसे कहें कि आपकी तरफ़ से पैरामाटा कस्टमर सर्विस को 9806 5050 पर फ़ोन करें। यह सेवा सोमवार से शुक्रवार, सुबह 8.30 बजे से शाम 5.00 तक उपलब्ध है।