



Flood Velocity (PMF)

Parramatta River Flood Study

Project Code: 59916074
 Drawn By: AS, Checked By: TB
 Map: 59916074-GS-023-PMFVelocity5k.mxd
 Rev: 06
 Date: 2023-05-30

Legend

- Study Area
- Watercourse
- Cadastre
- Building Footprint
- Tuflow Model Extent

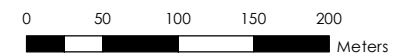
Max Max FFA PMF Flood Velocity (m/s)

- 0.0 - 0.5
- 0.5 - 1.0
- 1.0 - 1.5
- 1.5 - 2.0
- 2.0 - 3.0
- > 3.0

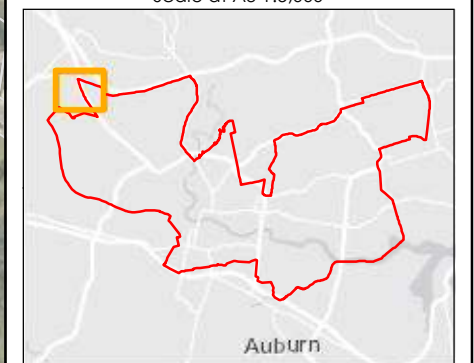
Figure G6.1

Notes:
 1. Coordinate System: GDA 1994 MGA Zone 56

References:
 1. Base data supplied by NSW SS and Esri
 2. Aerial imagery supplied by MetroMap
 3. Cadastre (2015) supplied by PCC



Scale at A3 1:5,000





Flood Velocity (PMF)

Parramatta River Flood Study

Project Code: 59916074
 Drawn By: AS, Checked By: TB
 Map: 59916074-GS-023-PMFVelocity5k.mxd
 Rev: 06
 Date: 2023-05-30

Legend

- Study Area
- Watercourse
- Cadastre
- Building Footprint
- Tuflow Model Extent

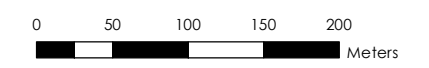
Max Max FFA PMF Flood Velocity (m/s)

- 0.0 - 0.5
- 0.5 - 1.0
- 1.0 - 1.5
- 1.5 - 2.0
- 2.0 - 3.0
- > 3.0

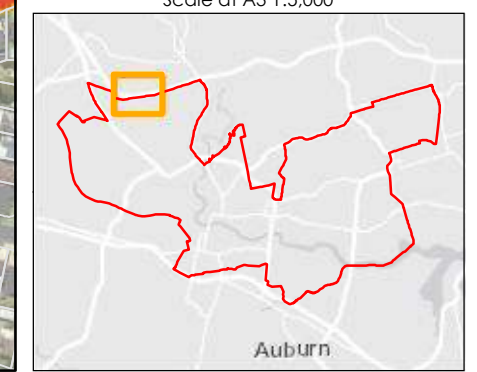
Figure G6.2

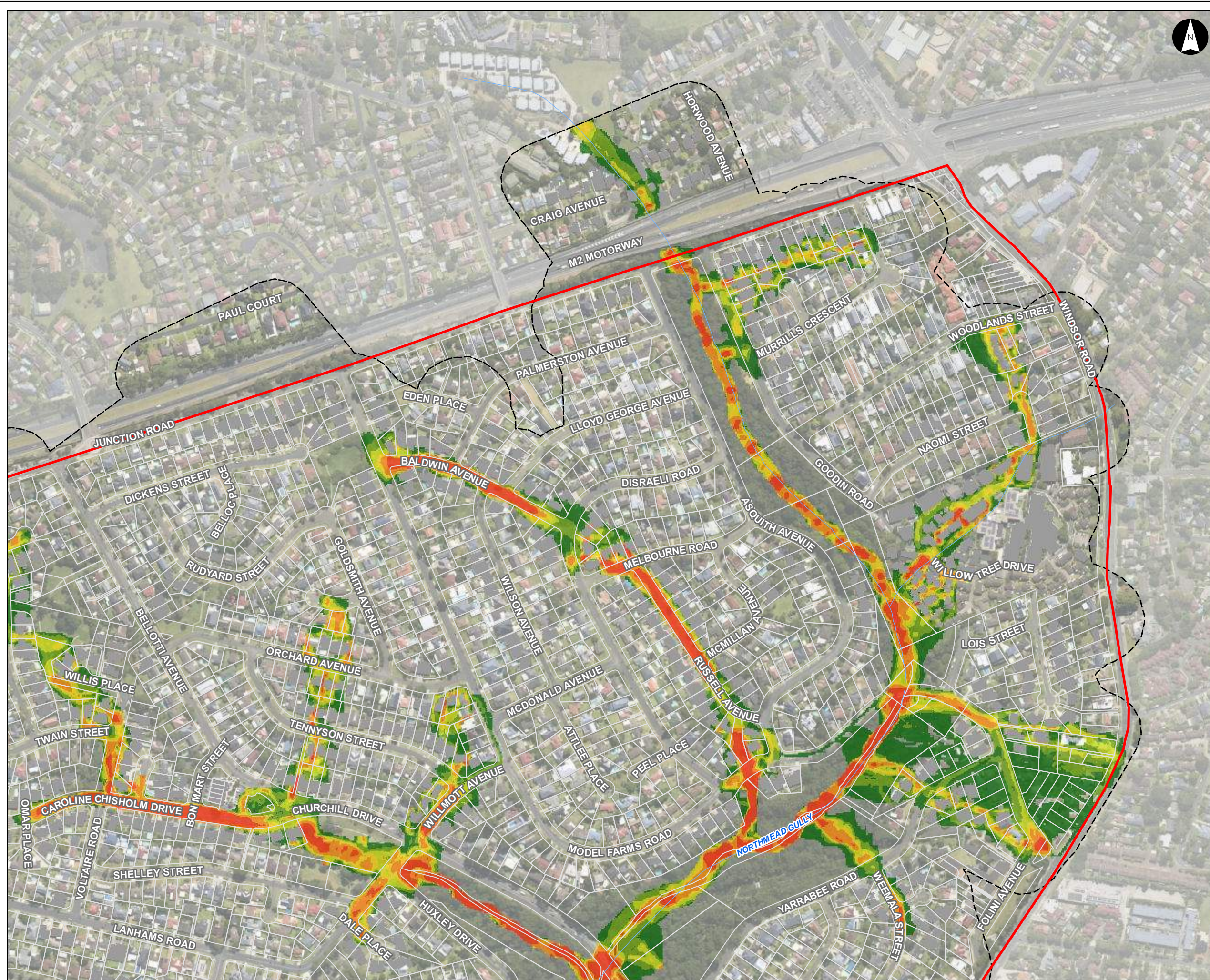
Notes:
 1. Coordinate System: GDA 1994 MGA Zone 56

- References:
1. Base data supplied by NSW SS and Esri
 2. Aerial imagery supplied by MetroMap
 3. Cadastre (2015) supplied by PCC



Scale at A3 1:5,000





Flood Velocity (PMF)

Parramatta River Flood Study

Project Code: 59916074
 Drawn By: AS, Checked By: TB
 Map: 59916074-GS-023-PMFVelocity5k.mxd
 Rev: 06
 Date: 2023-05-30

Legend

- Study Area
- Watercourse
- Cadastre
- Building Footprint
- Tuflow Model Extent

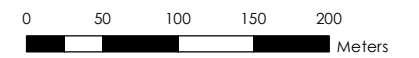
Max Max FFA PMF Flood Velocity (m/s)

- 0.0 - 0.5
- 0.5 - 1.0
- 1.0 - 1.5
- 1.5 - 2.0
- 2.0 - 3.0
- > 3.0

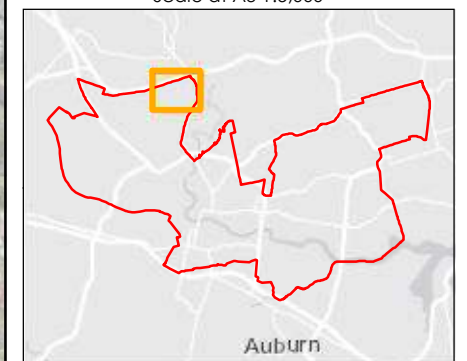
Figure G6.3

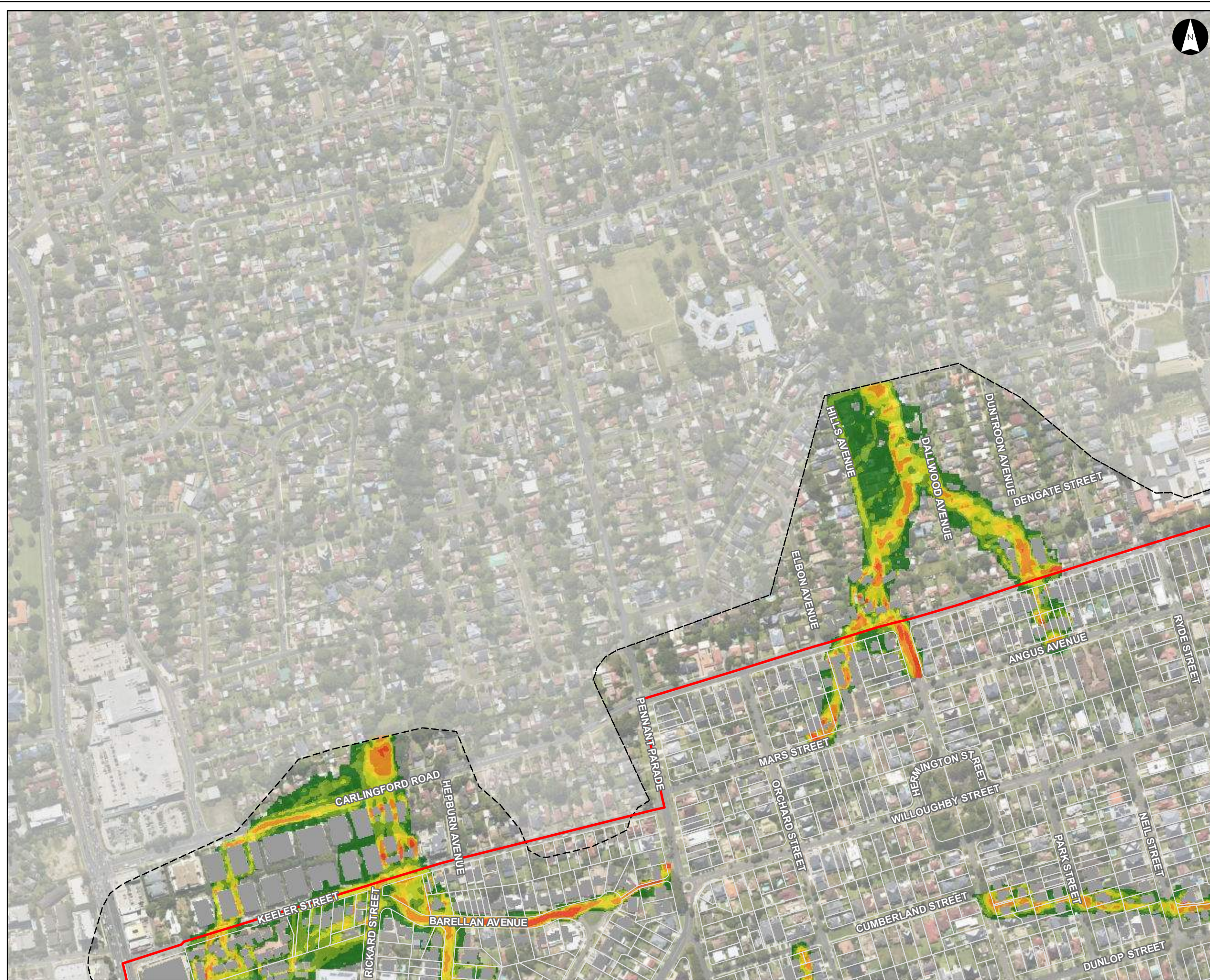
Notes:
 1. Coordinate System: GDA 1994 MGA Zone 56

References:
 1. Base data supplied by NSW SS and Esri
 2. Aerial imagery supplied by MetroMap
 3. Cadastre (2015) supplied by PCC



Scale at A3 1:5,000





Flood Velocity (PMF)

Parramatta River Flood Study

Project Code: 59916074
 Drawn By: AS, Checked By: TB
 Map: 59916074-GS-023-PMFVelocity5k.mxd
 Rev: 06
 Date: 2023-05-30

Legend

- Study Area
- Watercourse
- Cadastre
- Building Footprint
- Tuflow Model Extent

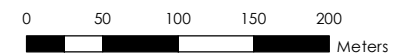
Max Max FFA PMF Flood Velocity (m/s)

- 0.0 - 0.5
- 0.5 - 1.0
- 1.0 - 1.5
- 1.5 - 2.0
- 2.0 - 3.0
- > 3.0

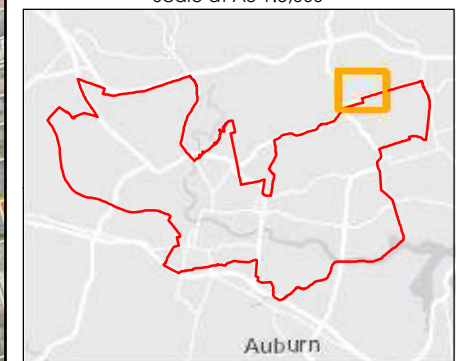
Figure G6.4

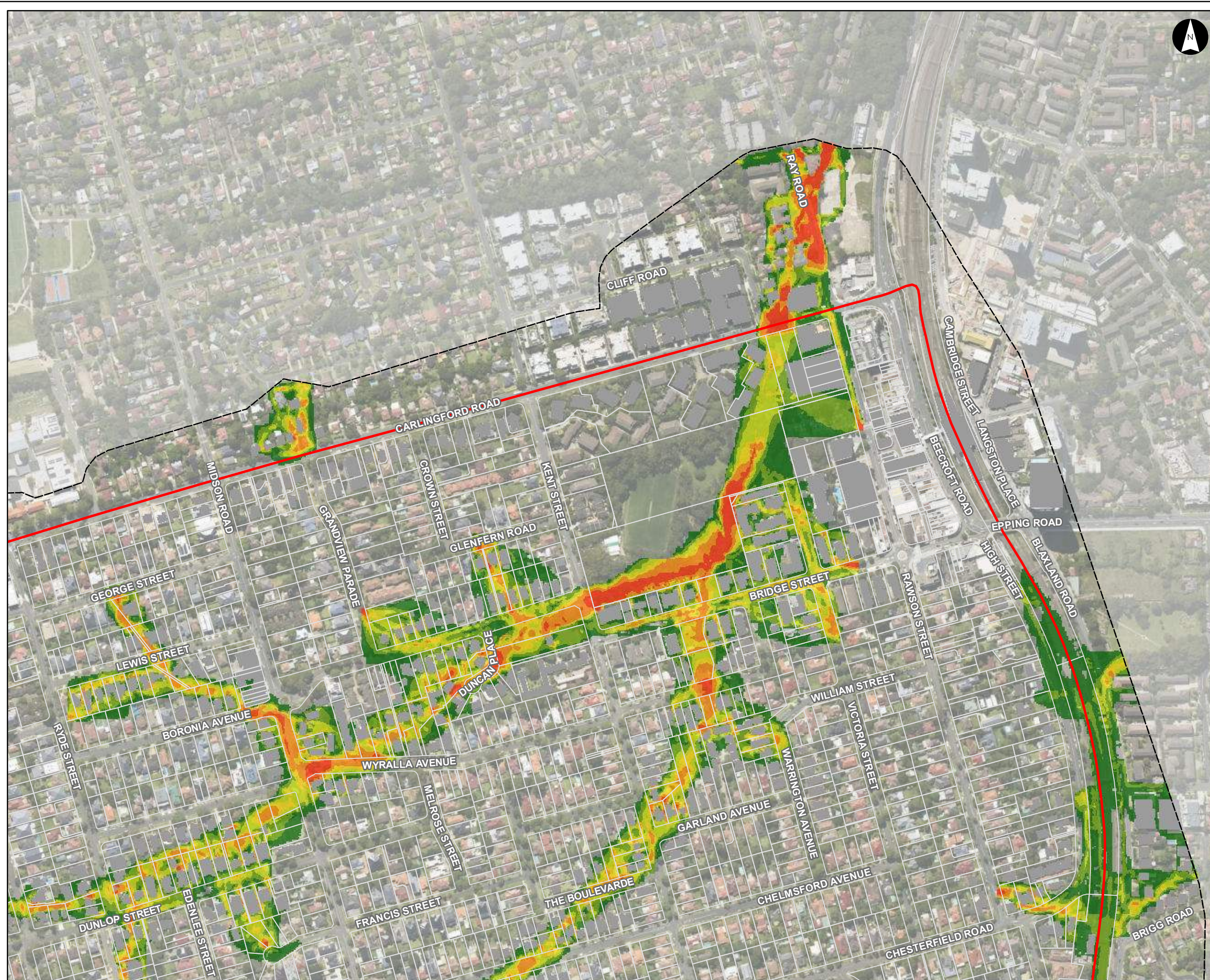
Notes:
 1. Coordinate System: GDA 1994 MGA Zone 56

References:
 1. Base data supplied by NSW SS and Esri
 2. Aerial imagery supplied by MetroMap
 3. Cadastre (2015) supplied by PCC



Scale at A3 1:5,000





Flood Velocity (PMF)

Parramatta River Flood Study

Project Code: 59916074
 Drawn By: AS, Checked By: TB
 Map: 59916074-GS-023-PMFVelocity5k.mxd
 Rev: 06
 Date: 2023-05-30

Legend

- Study Area
- Watercourse
- Cadastre
- Building Footprint
- Tuflow Model Extent

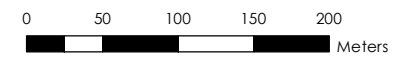
Max Max FFA PMF Flood Velocity (m/s)

- 0.0 - 0.5
- 0.5 - 1.0
- 1.0 - 1.5
- 1.5 - 2.0
- 2.0 - 3.0
- > 3.0

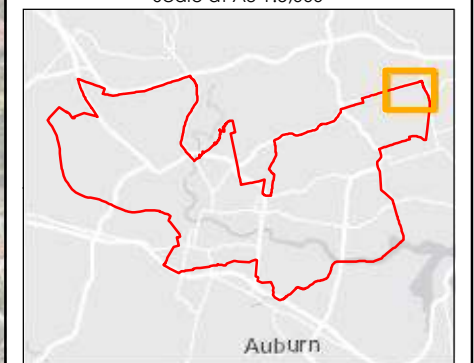
Figure G6.5

Notes:
 1. Coordinate System: GDA 1994 MGA Zone 56

References:
 1. Base data supplied by NSW SS and Esri
 2. Aerial imagery supplied by MetroMap
 3. Cadastre (2015) supplied by PCC



Scale at A3 1:5,000





Flood Velocity (PMF)

Parramatta River Flood Study

Project Code: 59916074
 Drawn By: AS, Checked By: TB
 Map: 59916074-GS-023-PMFVelocity5k.mxd
 Rev: 06
 Date: 2023-05-30

Legend

- Study Area
- Watercourse
- Cadastre
- Building Footprint
- Tuflow Model Extent


Max Max FFA PMF Flood Velocity (m/s)

- 0.0 - 0.5
- 0.5 - 1.0
- 1.0 - 1.5
- 1.5 - 2.0
- 2.0 - 3.0
- > 3.0

Figure G6.6

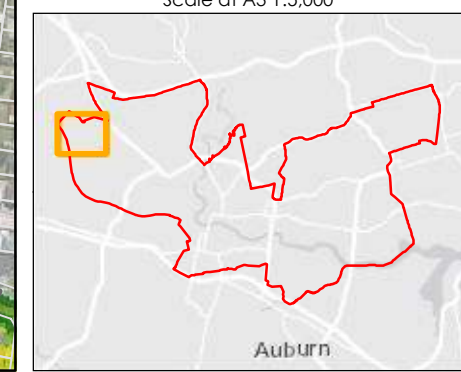
Notes:
 1. Coordinate System: GDA 1994 MGA Zone 56

References:
 1. Base data supplied by NSW SS and Esri
 2. Aerial imagery supplied by MetroMap
 3. Cadastre (2015) supplied by PCC

 **Stantec**

0 50 100 150 200
 Meters

Scale at A3 1:5,000





Flood Velocity (PMF)

Parramatta River Flood Study

Project Code: 59916074
 Drawn By: AS, Checked By: TB
 Map: 59916074-GS-023-PMFVelocity5k.mxd
 Rev: 06
 Date: 2023-05-30

Legend

- Study Area
- Watercourse
- Cadastre
- Building Footprint
- Tuflow Model Extent

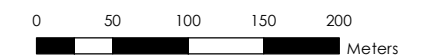
Max Max FFA PMF Flood Velocity (m/s)

- 0.0 - 0.5
- 0.5 - 1.0
- 1.0 - 1.5
- 1.5 - 2.0
- 2.0 - 3.0
- > 3.0

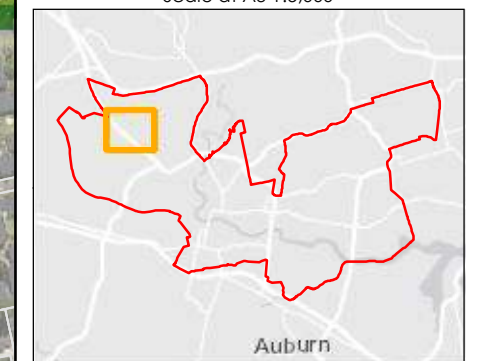
Figure G6.7

Notes:
 1. Coordinate System: GDA 1994 MGA Zone 56

References:
 1. Base data supplied by NSW SS and Esri
 2. Aerial imagery supplied by MetroMap
 3. Cadastre (2015) supplied by PCC



Scale at A3 1:5,000





Flood Velocity (PMF)

Parramatta River Flood Study

Project Code: 59916074
 Drawn By: AS, Checked By: TB
 Map: 59916074-GS-023-PMFVelocity5k.mxd
 Rev: 06
 Date: 2023-05-30

Legend

- Study Area
- Watercourse
- Cadastre
- Building Footprint
- Tuflow Model Extent

Max Max FFA PMF Flood Velocity (m/s)

- 0.0 - 0.5
- 0.5 - 1.0
- 1.0 - 1.5
- 1.5 - 2.0
- 2.0 - 3.0
- > 3.0

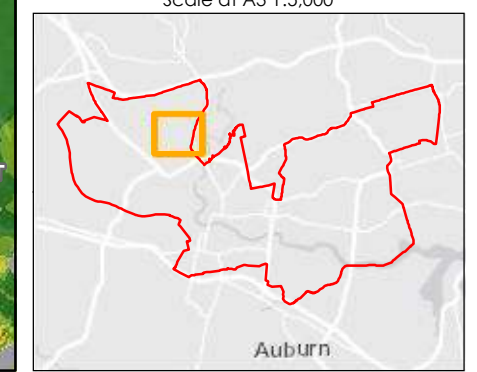
Figure G6.8

Notes:
 1. Coordinate System: GDA 1994 MGA Zone 56

References:
 1. Base data supplied by NSW SS and Esri
 2. Aerial imagery supplied by MetroMap
 3. Cadastre (2015) supplied by PCC



Scale at A3 1:5,000





Flood Velocity (PMF)

Parramatta River Flood Study

Project Code: 59916074
 Drawn By: AS, Checked By: TB
 Map: 59916074-GS-023-PMFVelocity5k.mxd
 Rev: 06
 Date: 2023-05-30

Legend

- Study Area
- Watercourse
- Cadastre
- Building Footprint
- Tuflow Model Extent

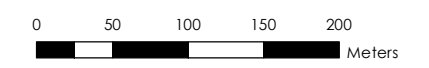
Max Max FFA PMF Flood Velocity (m/s)

- 0.0 - 0.5
- 0.5 - 1.0
- 1.0 - 1.5
- 1.5 - 2.0
- 2.0 - 3.0
- > 3.0

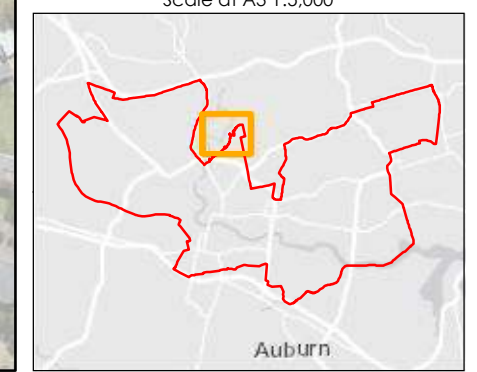
Figure G6.9

Notes:
 1. Coordinate System: GDA 1994 MGA Zone 56

References:
 1. Base data supplied by NSW SS and Esri
 2. Aerial imagery supplied by MetroMap
 3. Cadastre (2015) supplied by PCC



Scale at A3 1:5,000





Flood Velocity (PMF)

Parramatta River Flood Study

Project Code: 59916074
 Drawn By: AS, Checked By: TB
 Map: 59916074-GS-023-PMFVelocity5k.mxd
 Rev: 06
 Date: 2023-05-30

Legend

- Study Area
- Watercourse
- Cadastre
- Building Footprint
- Tuflow Model Extent

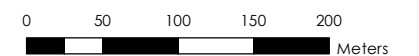
Max Max FFA PMF Flood Velocity (m/s)

- 0.0 - 0.5
- 0.5 - 1.0
- 1.0 - 1.5
- 1.5 - 2.0
- 2.0 - 3.0
- > 3.0

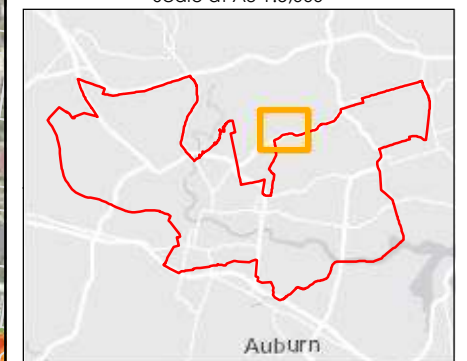
Figure G6.10

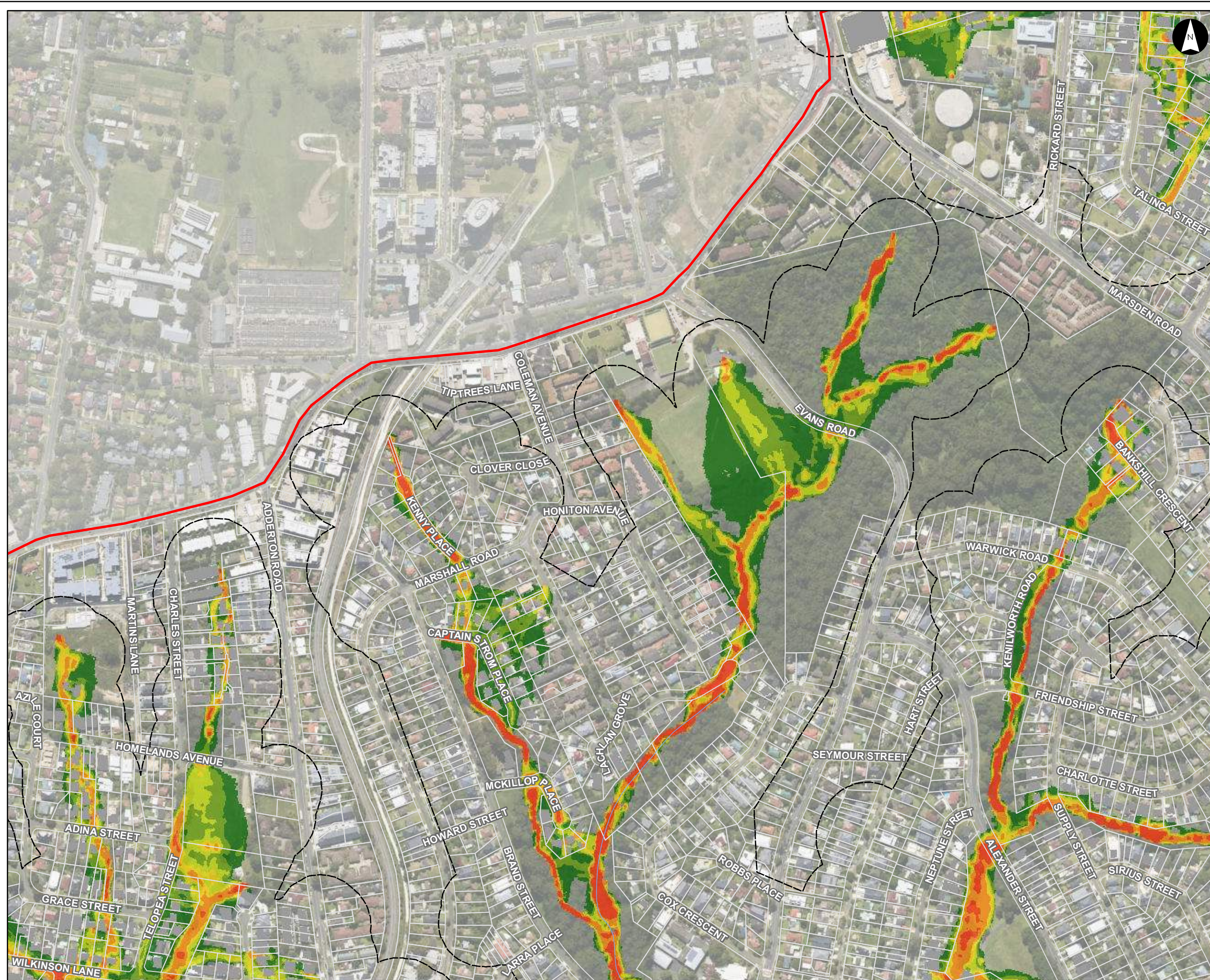
Notes:
 1. Coordinate System: GDA 1994 MGA Zone 56

References:
 1. Base data supplied by NSW SS and Esri
 2. Aerial imagery supplied by MetroMap
 3. Cadastre (2015) supplied by PCC



Scale at A3 1:5,000





Flood Velocity (PMF)

Parramatta River Flood Study

Project Code: 59916074
 Drawn By: AS, Checked By: TB
 Map: 59916074-GS-023-PMFVelocity5k.mxd
 Rev: 06
 Date: 2023-05-30

Legend

- Study Area
- Watercourse
- Cadastre
- Building Footprint
- Tuflow Model Extent

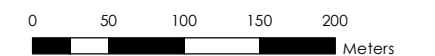
Max Max FFA PMF Flood Velocity (m/s)

- 0.0 - 0.5
- 0.5 - 1.0
- 1.0 - 1.5
- 1.5 - 2.0
- 2.0 - 3.0
- > 3.0

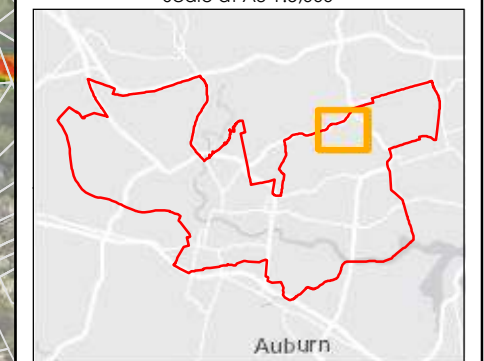
Figure G6.11

Notes:
 1. Coordinate System: GDA 1994 MGA Zone 56

References:
 1. Base data supplied by NSW SS and Esri
 2. Aerial imagery supplied by MetroMap
 3. Cadastre (2015) supplied by PCC



Scale at A3 1:5,000





Flood Velocity (PMF)

Parramatta River Flood Study

Project Code: 59916074
 Drawn By: AS, Checked By: TB
 Map: 59916074-GS-023-PMFVelocity5k.mxd
 Rev: 06
 Date: 2023-05-30

Legend

- Study Area
- Watercourse
- Cadastre
- Building Footprint
- Tuflow Model Extent

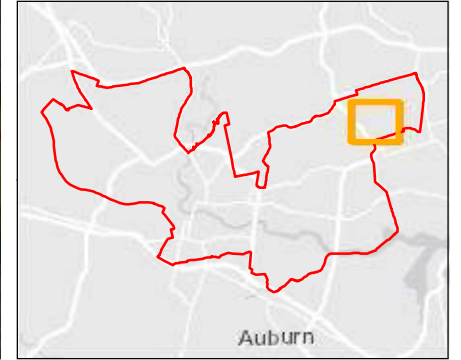
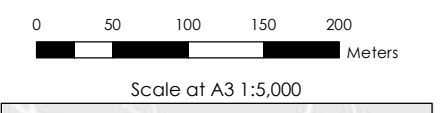
Max Max FFA PMF Flood Velocity (m/s)

- 0.0 - 0.5
- 0.5 - 1.0
- 1.0 - 1.5
- 1.5 - 2.0
- 2.0 - 3.0
- > 3.0

Figure G6.12

Notes:
 1. Coordinate System: GDA 1994 MGA Zone 56

References:
 1. Base data supplied by NSW SS and Esri
 2. Aerial imagery supplied by MetroMap
 3. Cadastre (2015) supplied by PCC





Flood Velocity (PMF)

Parramatta River Flood Study

Project Code: 59916074
 Drawn By: AS, Checked By: TB
 Map: 59916074-GS-023-PMFVelocity5k.mxd
 Rev: 06
 Date: 2023-05-30

Legend

- Study Area
- Watercourse
- Cadastre
- Building Footprint
- Tuflow Model Extent

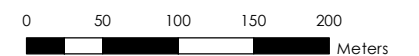
Max Max FFA PMF Flood Velocity (m/s)

- 0.0 - 0.5
- 0.5 - 1.0
- 1.0 - 1.5
- 1.5 - 2.0
- 2.0 - 3.0
- > 3.0

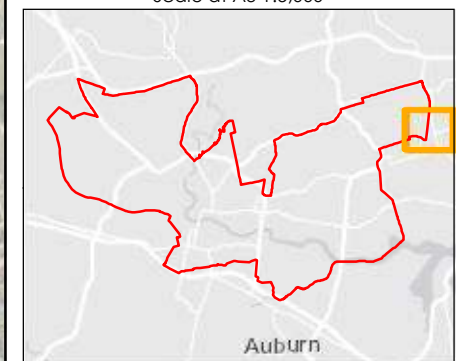
Figure G6.13

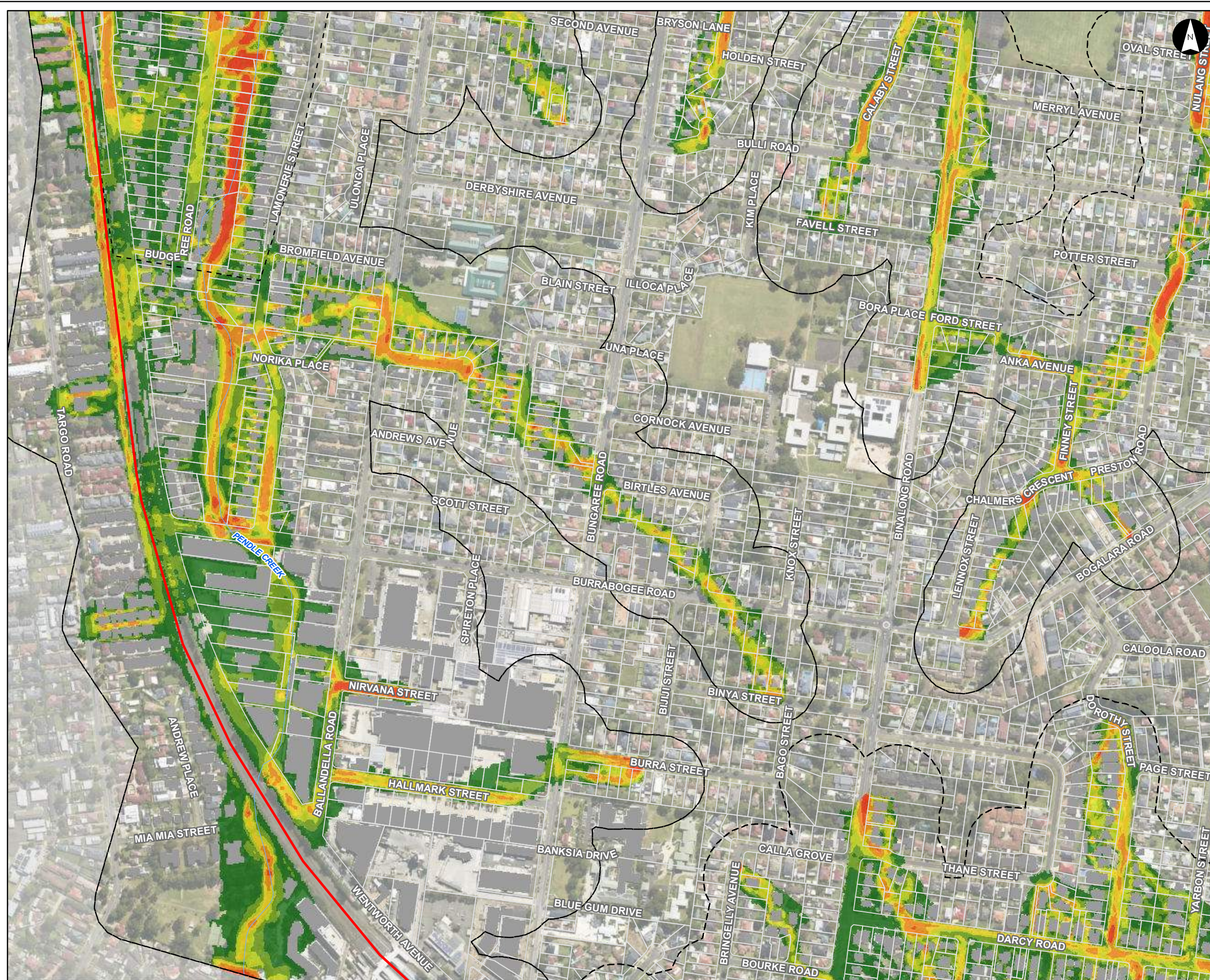
Notes:
 1. Coordinate System: GDA 1994 MGA Zone 56

References:
 1. Base data supplied by NSW SS and Esri
 2. Aerial imagery supplied by MetroMap
 3. Cadastre (2015) supplied by PCC



Scale at A3 1:5,000





Flood Velocity (PMF)

Parramatta River Flood Study

Project Code: 59916074
 Drawn By: AS, Checked By: TB
 Map: 59916074-GS-023-PMFVelocity5k.mxd
 Rev: 06
 Date: 2023-05-30

Legend

- Study Area
- Watercourse
- Cadastre
- Building Footprint
- Tuflow Model Extent

Max Max FFA PMF Flood Velocity (m/s)

- 0.0 - 0.5
- 0.5 - 1.0
- 1.0 - 1.5
- 1.5 - 2.0
- 2.0 - 3.0
- > 3.0

Figure G6.14

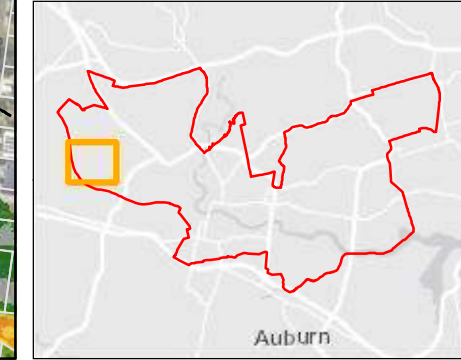
Notes:
 1. Coordinate System: GDA 1994 MGA Zone 56

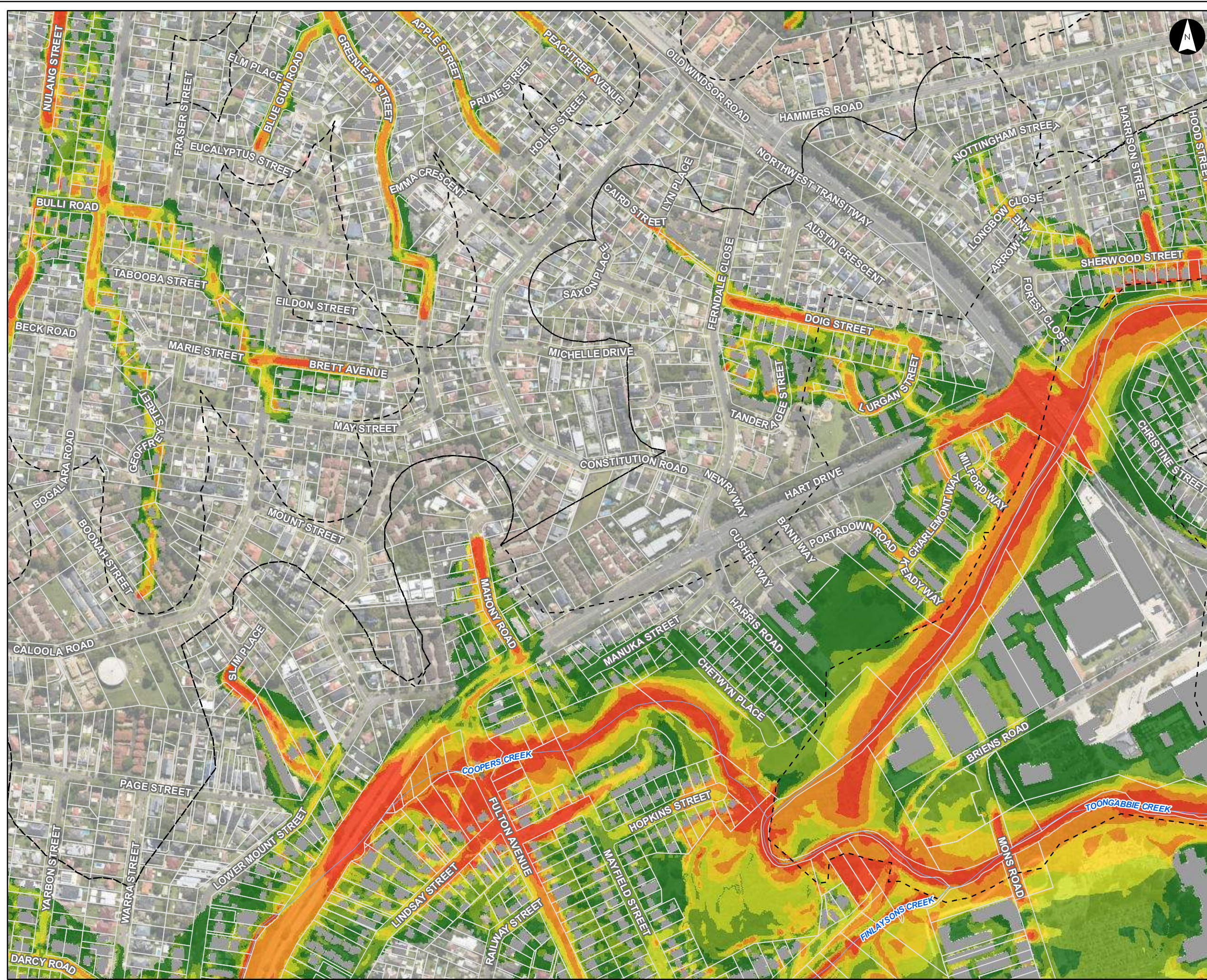
References:
 1. Base data supplied by NSW SS and Esri
 2. Aerial imagery supplied by MetroMap
 3. Cadastre (2015) supplied by PCC

Stantec

0 50 100 150 200 Meters

Scale at A3 1:5,000





Flood Velocity (PMF)

Parramatta River Flood Study

Project Code: 59916074
 Drawn By: AS, Checked By: TB
 Map: 59916074-GS-023-PMFVelocity5k.mxd
 Rev: 06
 Date: 2023-05-30

Legend

- Study Area
- Watercourse
- Cadastre
- Building Footprint
- Tuflow Model Extent

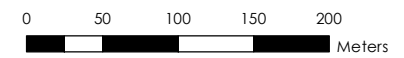
Max Max FFA PMF Flood Velocity (m/s)

- 0.0 - 0.5
- 0.5 - 1.0
- 1.0 - 1.5
- 1.5 - 2.0
- 2.0 - 3.0
- > 3.0

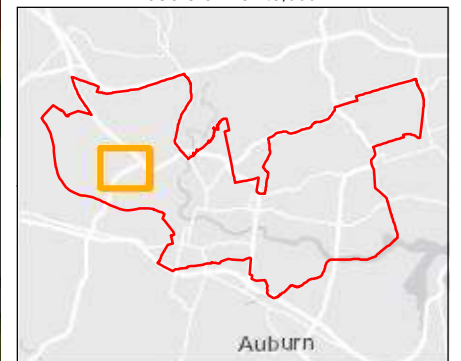
Figure G6.15

Notes:
 1. Coordinate System: GDA 1994 MGA Zone 56

References:
 1. Base data supplied by NSW SS and Esri
 2. Aerial imagery supplied by MetroMap
 3. Cadastre (2015) supplied by PCC



Scale at A3 1:5,000



This document has been prepared based on information provided by others as cited in the data sources. Stantec has not verified the accuracy and/or completeness of this information and shall not be responsible for any errors or omissions which may be incorporated herein as a result. Stantec assumes no responsibility for data supplied in electronic format, and the recipient accepts full responsibility for verifying the accuracy and completeness of the data.



Flood Velocity (PMF)

Parramatta River Flood Study

Project Code: 59916074
 Drawn By: AS, Checked By: TB
 Map: 59916074-GS-023-PMFVelocity5k.mxd
 Rev: 06
 Date: 2023-05-30

Legend

- Study Area
- Watercourse
- Cadastre
- Building Footprint
- Tuflow Model Extent

Max Max FFA PMF Flood Velocity (m/s)

- 0.0 - 0.5
- 0.5 - 1.0
- 1.0 - 1.5
- 1.5 - 2.0
- 2.0 - 3.0
- > 3.0

Figure G6.16

Notes:

1. Coordinate System: GDA 1994 MGA Zone 56

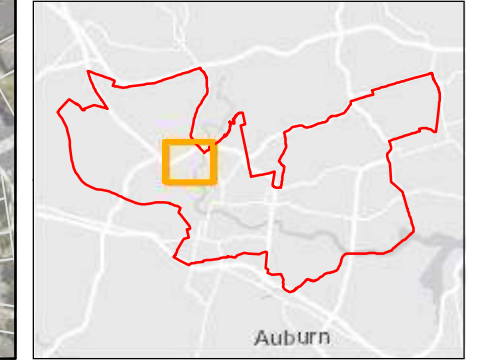
References:

1. Base data supplied by NSW SS and Esri
2. Aerial imagery supplied by MetroMap
3. Cadastre (2015) supplied by PCC

Stantec

0 50 100 150 200 Meters

Scale at A3 1:5,000





Flood Velocity (PMF)

Parramatta River Flood Study

Project Code: 59916074
 Drawn By: AS, Checked By: TB
 Map: 59916074-GS-023-PMFVelocity5k.mxd
 Rev: 06
 Date: 2023-05-30

Legend

- Study Area
- Watercourse
- Cadastre
- Building Footprint
- Tuflow Model Extent

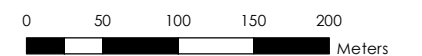
Max Max FFA PMF Flood Velocity (m/s)

- 0.0 - 0.5
- 0.5 - 1.0
- 1.0 - 1.5
- 1.5 - 2.0
- 2.0 - 3.0
- > 3.0

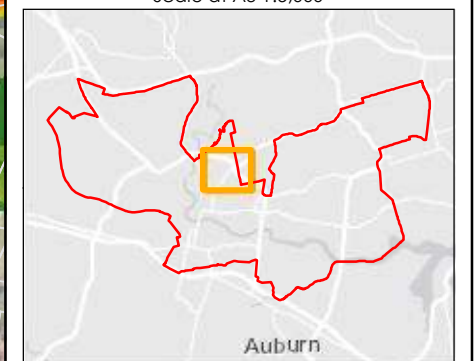
Figure G6.17

Notes:
 1. Coordinate System: GDA 1994 MGA Zone 56

References:
 1. Base data supplied by NSW SS and Esri
 2. Aerial imagery supplied by MetroMap
 3. Cadastre (2015) supplied by PCC



Scale at A3 1:5,000





Flood Velocity (PMF)

Parramatta River Flood Study

Project Code: 59916074
 Drawn By: AS, Checked By: TB
 Map: 59916074-GS-023-PMFVelocity5k.mxd
 Rev: 06
 Date: 2023-05-30

Legend

- Study Area
- Watercourse
- Cadastre
- Building Footprint
- Tuflow Model Extent


Max Max FFA PMF Flood Velocity (m/s)

- 0.0 - 0.5
- 0.5 - 1.0
- 1.0 - 1.5
- 1.5 - 2.0
- 2.0 - 3.0
- > 3.0

Figure G6.18

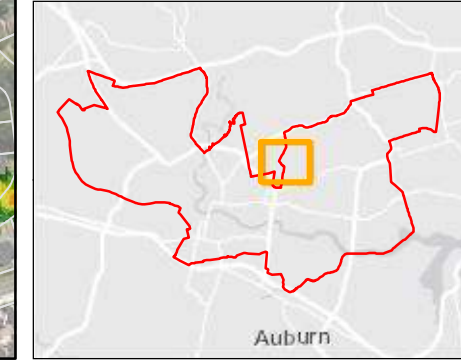
Notes:
 1. Coordinate System: GDA 1994 MGA Zone 56

References:
 1. Base data supplied by NSW SS and Esri
 2. Aerial imagery supplied by MetroMap
 3. Cadastre (2015) supplied by PCC

 **Stantec**

0 50 100 150 200 Meters

Scale at A3 1:5,000



This document has been prepared based on information provided by others as cited in the data sources. Stantec has not verified the accuracy and/or completeness of this information and shall not be responsible for any errors or omissions which may be incorporated herein as a result. Stantec assumes no responsibility for data supplied in electronic format, and the recipient accepts full responsibility for verifying the accuracy and completeness of the data.



Flood Velocity (PMF)

Parramatta River Flood Study
 Project Code: 59916074
 Drawn By: AS, Checked By: TB
 Map: 59916074-GS-023-PMFVelocity5k.mxd
 Rev: 06
 Date: 2023-05-30

Legend

- Study Area
- Watercourse
- Cadastre
- Building Footprint
- Tuflow Model Extent

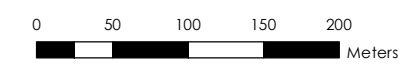
Max Max FFA PMF Flood Velocity (m/s)

- 0.0 - 0.5
- 0.5 - 1.0
- 1.0 - 1.5
- 1.5 - 2.0
- 2.0 - 3.0
- > 3.0

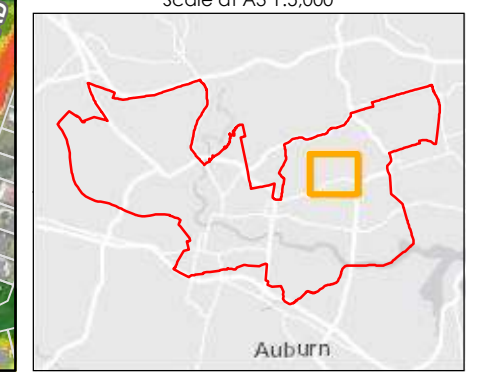
Figure G6.19

Notes:
 1. Coordinate System: GDA 1994 MGA Zone 56

References:
 1. Base data supplied by NSW SS and Esri
 2. Aerial imagery supplied by MetroMap
 3. Cadastre (2015) supplied by PCC



Scale at A3 1:5,000





Flood Velocity (PMF)

Parramatta River Flood Study

Project Code: 59916074
 Drawn By: AS, Checked By: TB
 Map: 59916074-GS-023-PMFVelocity5k.mxd
 Rev: 06
 Date: 2023-05-30

Legend

- Study Area
- Watercourse
- Cadastre
- Building Footprint
- Tuflow Model Extent

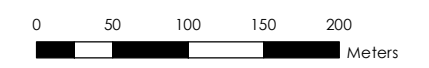
Max Max FFA PMF Flood Velocity (m/s)

- 0.0 - 0.5
- 0.5 - 1.0
- 1.0 - 1.5
- 1.5 - 2.0
- 2.0 - 3.0
- > 3.0

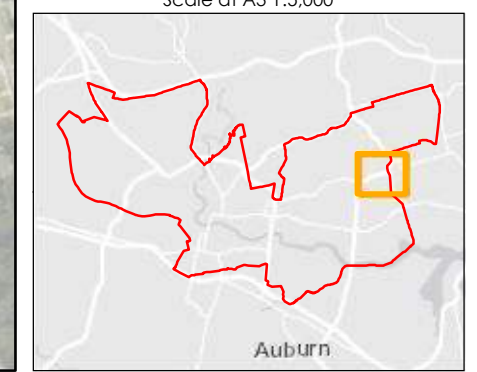
Figure G6.20

Notes:
 1. Coordinate System: GDA 1994 MGA Zone 56

References:
 1. Base data supplied by NSW SS and Esri
 2. Aerial imagery supplied by MetroMap
 3. Cadastre (2015) supplied by PCC



Scale at A3 1:5,000





Flood Velocity (PMF)

Parramatta River Flood Study

Project Code: 59916074
 Drawn By: AS, Checked By: TB
 Map: 59916074-GS-023-PMFVelocity5k.mxd
 Rev: 06
 Date: 2023-05-30

Legend

- Study Area
- Watercourse
- Cadastre
- Building Footprint
- Tuflow Model Extent

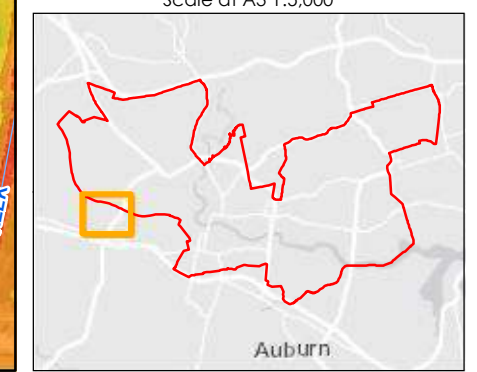
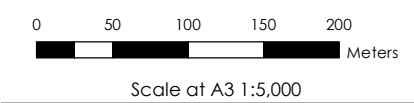
Max Max FFA PMF Flood Velocity (m/s)

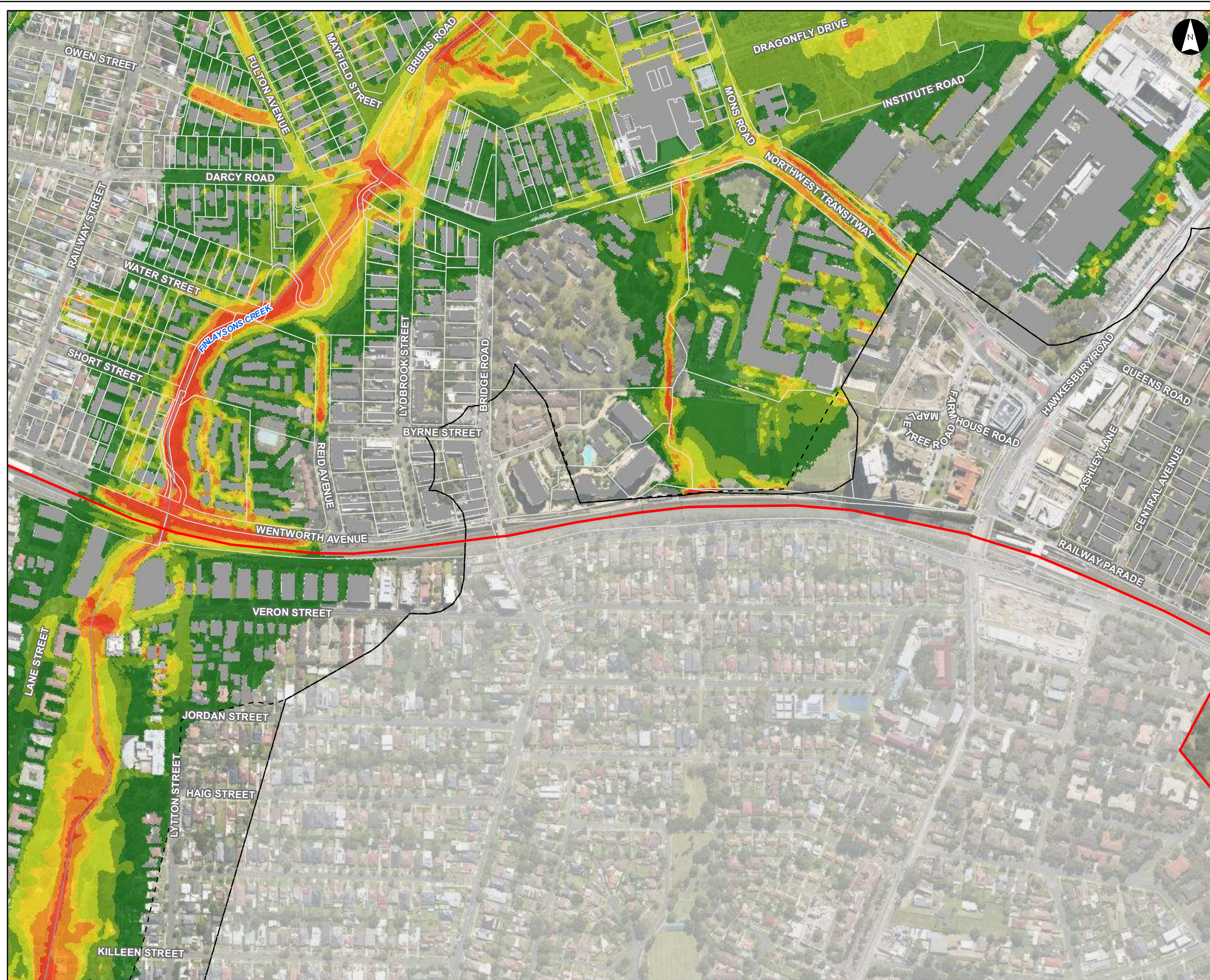
- 0.0 - 0.5
- 0.5 - 1.0
- 1.0 - 1.5
- 1.5 - 2.0
- 2.0 - 3.0
- > 3.0

Figure G6.21

Notes:
 1. Coordinate System: GDA 1994 MGA Zone 56

References:
 1. Base data supplied by NSW SS and Esri
 2. Aerial imagery supplied by MetroMap
 3. Cadastre (2015) supplied by PCC





Flood Velocity (PMF)

Parramatta River Flood Study

Project Code: 59916074
 Drawn By: AS, Checked By: TB
 Map: 59916074-GS-023-PMFVelocity5k.mxd
 Rev: 06
 Date: 2023-05-30

Legend

- Study Area
- Watercourse
- Cadastre
- Building Footprint
- Tuflow Model Extent

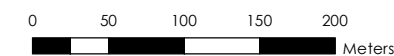
Max Max FFA PMF Flood Velocity (m/s)

- 0.0 - 0.5
- 0.5 - 1.0
- 1.0 - 1.5
- 1.5 - 2.0
- 2.0 - 3.0
- > 3.0

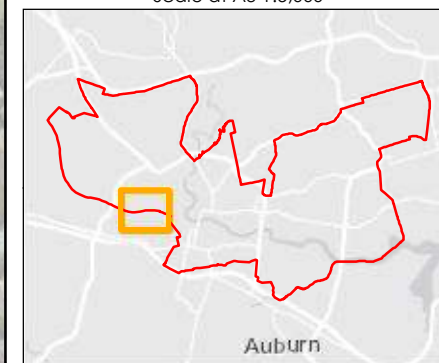
Figure G6.22

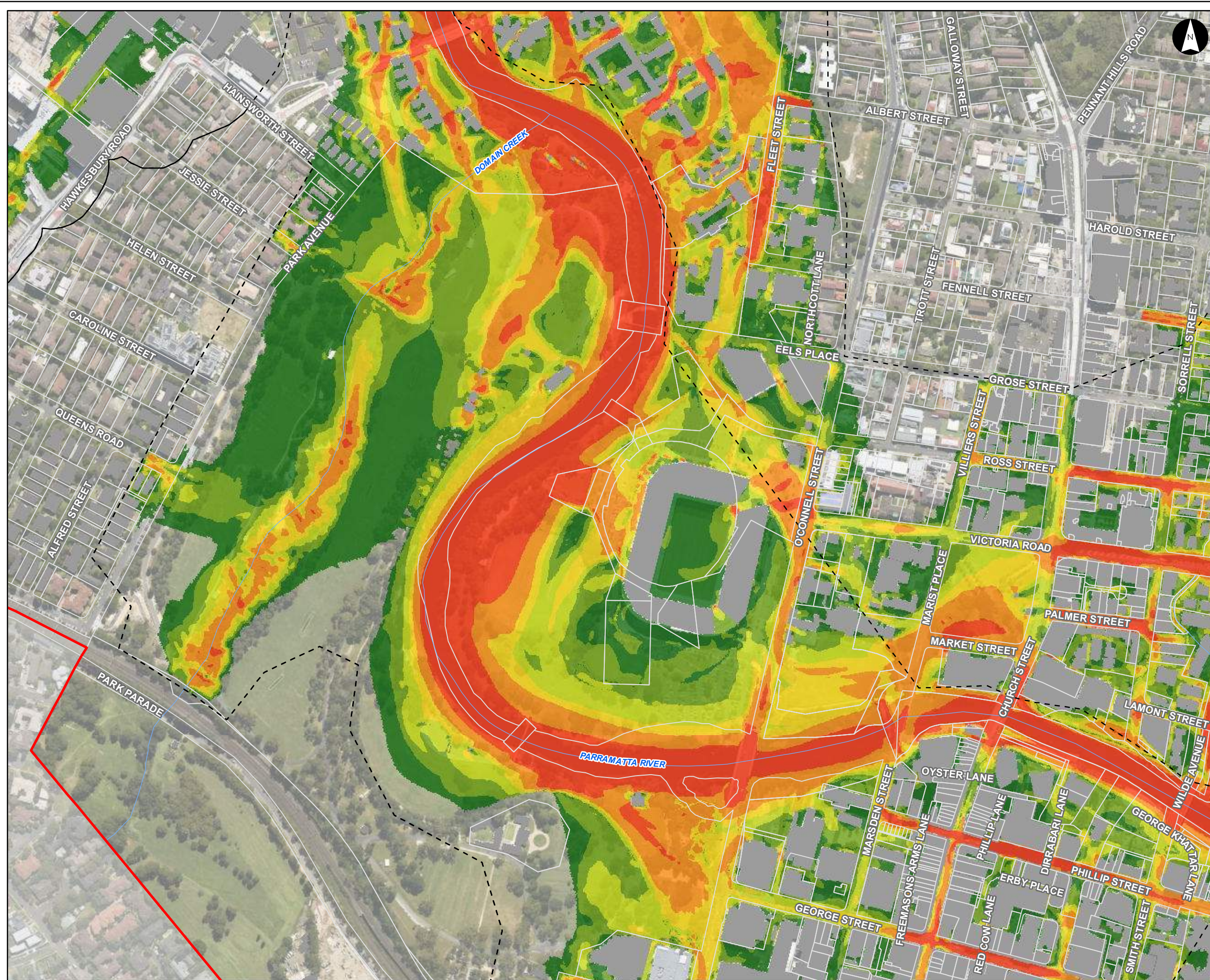
Notes:
 1. Coordinate System: GDA 1994 MGA Zone 56

References:
 1. Base data supplied by NSW SS and Esri
 2. Aerial imagery supplied by MetroMap
 3. Cadastre (2015) supplied by PCC



Scale at A3 1:5,000





Flood Velocity (PMF)

Parramatta River Flood Study

Project Code: 59916074
 Drawn By: AS, Checked By: TB
 Map: 59916074-GS-023-PMFVelocity5k.mxd
 Rev: 06
 Date: 2023-05-30

Legend

- Study Area
- Watercourse
- Cadastre
- Building Footprint
- Tuflow Model Extent

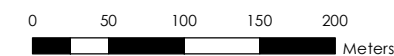
Max Max FFA PMF Flood Velocity (m/s)

- 0.0 - 0.5
- 0.5 - 1.0
- 1.0 - 1.5
- 1.5 - 2.0
- 2.0 - 3.0
- > 3.0

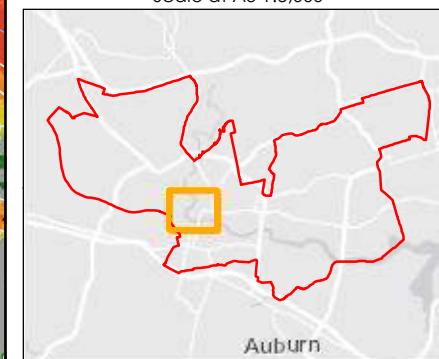
Figure G6.23

Notes:
 1. Coordinate System: GDA 1994 MGA Zone 56

References:
 1. Base data supplied by NSW SS and Esri
 2. Aerial imagery supplied by MetroMap
 3. Cadastre (2015) supplied by PCC



Scale at A3 1:5,000





Flood Velocity (PMF)

Parramatta River Flood Study

Project Code: 59916074
 Drawn By: AS, Checked By: TB
 Map: 59916074-GS-023-PMFVelocity5k.mxd
 Rev: 06
 Date: 2023-05-30

Legend

- Study Area
- Watercourse
- Cadastre
- Building Footprint
- Tuflow Model Extent

Max Max FFA PMF Flood Velocity (m/s)

- 0.0 - 0.5
- 0.5 - 1.0
- 1.0 - 1.5
- 1.5 - 2.0
- 2.0 - 3.0
- > 3.0

Figure G6.24

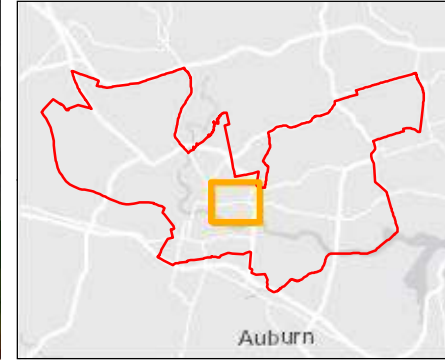
Notes:
 1. Coordinate System: GDA 1994 MGA Zone 56

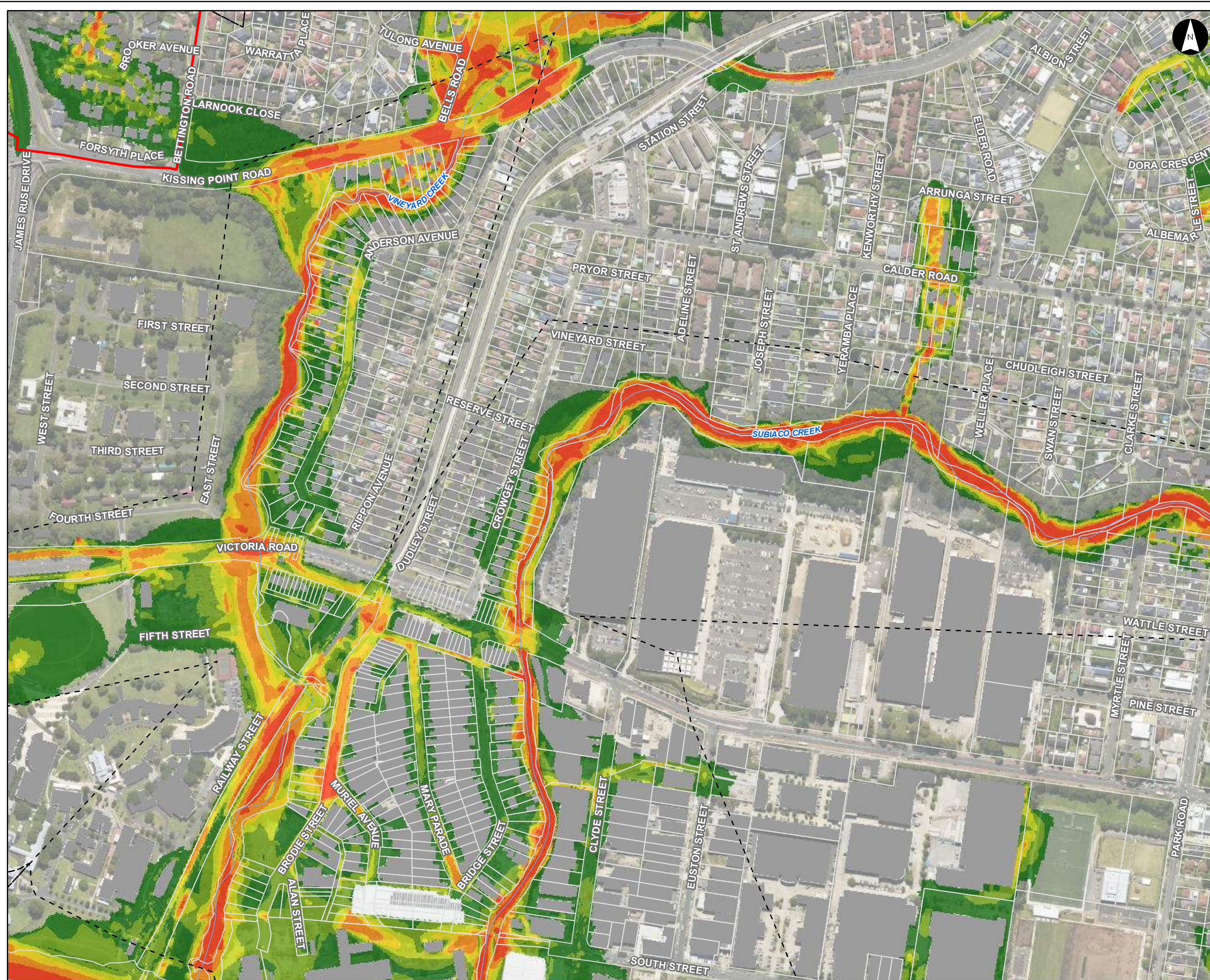
References:
 1. Base data supplied by NSW SS and Esri
 2. Aerial imagery supplied by MetroMap
 3. Cadastre (2015) supplied by PCC

Stantec

0 50 100 150 200 Meters

Scale at A3 1:5,000





Flood Velocity (PMF)

Parramatta River Flood Study

Project Code: 59916074
 Drawn By: AS, Checked By: TB
 Map: 59916074-GS-023-PMFVelocity5k.mxd
 Rev: 06
 Date: 2023-05-30

Legend

- Study Area
- Watercourse
- Cadastre
- Building Footprint
- Tuflow Model Extent

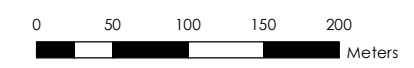
Max Max FFA PMF Flood Velocity (m/s)

- 0.0 - 0.5
- 0.5 - 1.0
- 1.0 - 1.5
- 1.5 - 2.0
- 2.0 - 3.0
- > 3.0

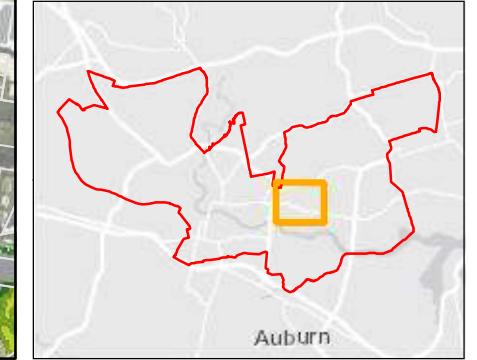
Figure G6.25

Notes:
 1. Coordinate System: GDA 1994 MGA Zone 56

References:
 1. Base data supplied by NSW SS and Esri
 2. Aerial imagery supplied by MetroMap
 3. Cadastre (2015) supplied by PCC



Scale at A3 1:5,000





Flood Velocity (PMF)

Parramatta River Flood Study

Project Code: 59916074
 Drawn By: AS, Checked By: TB
 Map: 59916074-GS-023-PMFVelocity5k.mxd
 Rev: 06
 Date: 2023-05-30

Legend

- Study Area
- Watercourse
- Cadastre
- Building Footprint
- Tuflow Model Extent

Max Max FFA PMF Flood Velocity (m/s)

- 0.0 - 0.5
- 0.5 - 1.0
- 1.0 - 1.5
- 1.5 - 2.0
- 2.0 - 3.0
- > 3.0


Figure G6.26

Notes:

- Coordinate System: GDA 1994 MGA Zone 56

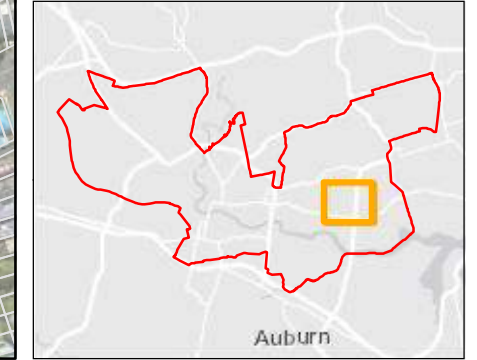
References:

- Base data supplied by NSW SS and Esri
- Aerial imagery supplied by MetroMap
- Cadastre (2015) supplied by PCC

 **Stantec**

0 50 100 150 200 Meters

Scale at A3 1:5,000





Flood Velocity (PMF)

Parramatta River Flood Study

Project Code: 59916074
 Drawn By: AS, Checked By: TB
 Map: 59916074-GS-023-PMFVelocity5k.mxd
 Rev: 06
 Date: 2023-05-30

Legend

- Study Area
- Watercourse
- Cadastre
- Building Footprint
- Tuflow Model Extent

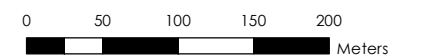
Max Max FFA PMF Flood Velocity (m/s)

- 0.0 - 0.5
- 0.5 - 1.0
- 1.0 - 1.5
- 1.5 - 2.0
- 2.0 - 3.0
- > 3.0

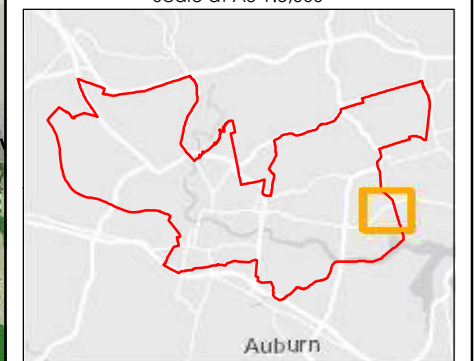
Figure G6.27

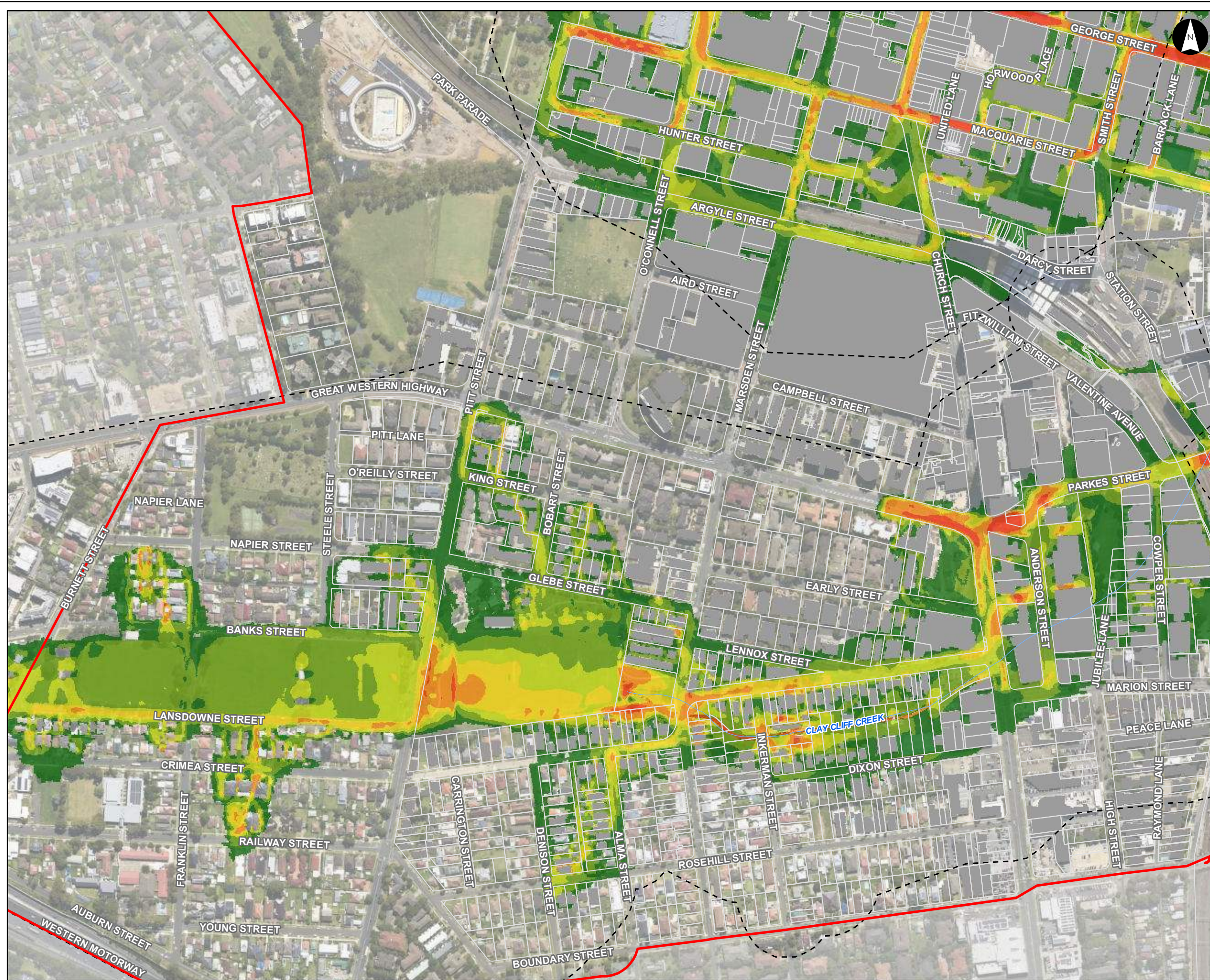
Notes:
 1. Coordinate System: GDA 1994 MGA Zone 56

References:
 1. Base data supplied by NSW SS and Esri
 2. Aerial imagery supplied by MetroMap
 3. Cadastre (2015) supplied by PCC



Scale at A3 1:5,000





Flood Velocity (PMF)

Parramatta River Flood Study
 Project Code: 59916074
 Drawn By: AS, Checked By: TB
 Map: 59916074-GS-023-PMFVelocity5k.mxd
 Rev: 06
 Date: 2023-05-30

Legend

- Study Area
- Watercourse
- Cadastre
- Building Footprint
- Tuflow Model Extent

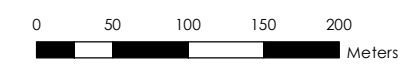
Max Max FFA PMF Flood Velocity (m/s)

- 0.0 - 0.5
- 0.5 - 1.0
- 1.0 - 1.5
- 1.5 - 2.0
- 2.0 - 3.0
- > 3.0

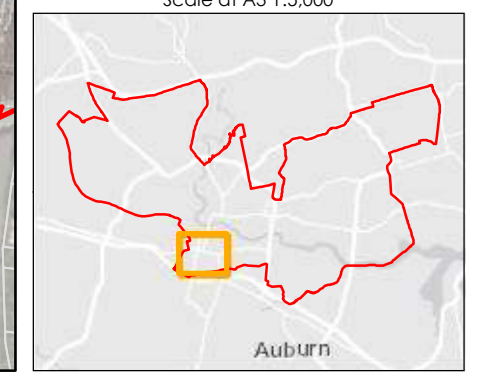
Figure G6.28

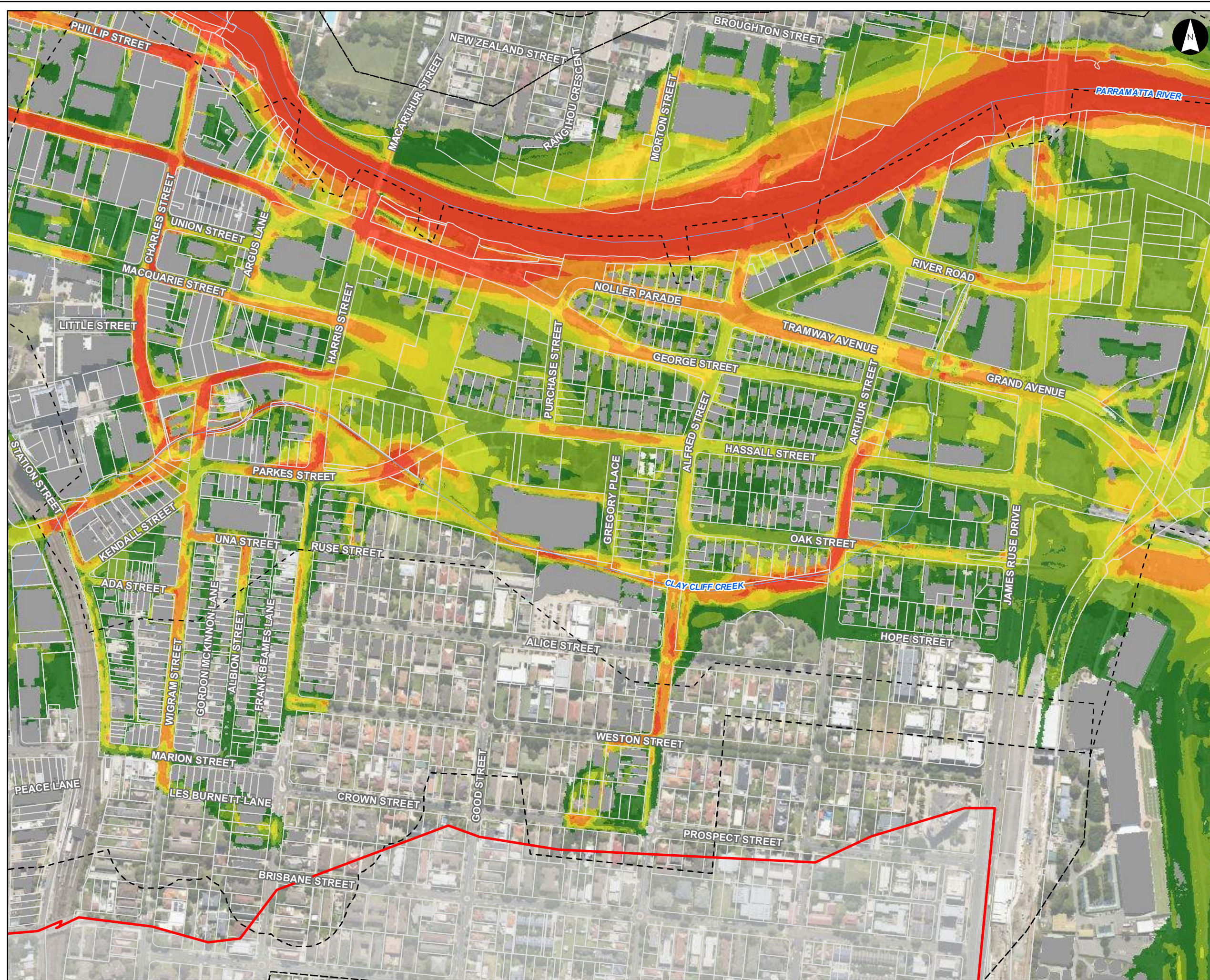
Notes:
 1. Coordinate System: GDA 1994 MGA Zone 56

- References:
1. Base data supplied by NSW SS and Esri
 2. Aerial imagery supplied by MetroMap
 3. Cadastre (2015) supplied by PCC



Scale at A3 1:5,000





Flood Velocity (PMF)

Parramatta River Flood Study

Project Code: 59916074
 Drawn By: AS, Checked By: TB
 Map: 59916074-GS-023-PMFVelocity5k.mxd
 Rev: 06
 Date: 2023-05-30

Legend

- Study Area
- Watercourse
- Cadastre
- Building Footprint
- Tuflow Model Extent

Max Max FFA PMF Flood Velocity (m/s)

- 0.0 - 0.5
- 0.5 - 1.0
- 1.0 - 1.5
- 1.5 - 2.0
- 2.0 - 3.0
- > 3.0

Figure G6.29

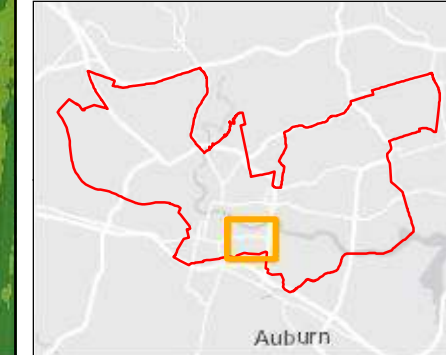
Notes:
 1. Coordinate System: GDA 1994 MGA Zone 56

References:
 1. Base data supplied by NSW SS and Esri
 2. Aerial imagery supplied by MetroMap
 3. Cadastre (2015) supplied by PCC

Stantec

0 50 100 150 200 Meters

Scale at A3 1:5,000





Flood Velocity (PMF)

Parramatta River Flood Study

Project Code: 59916074
 Drawn By: AS, Checked By: TB
 Map: 59916074-GS-023-PMFVelocity5k.mxd
 Rev: 06
 Date: 2023-05-30

Legend

- Study Area
- Watercourse
- Cadastre
- Building Footprint
- Tuflow Model Extent

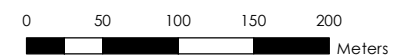
Max Max FFA PMF Flood Velocity (m/s)

- 0.0 - 0.5
- 0.5 - 1.0
- 1.0 - 1.5
- 1.5 - 2.0
- 2.0 - 3.0
- > 3.0

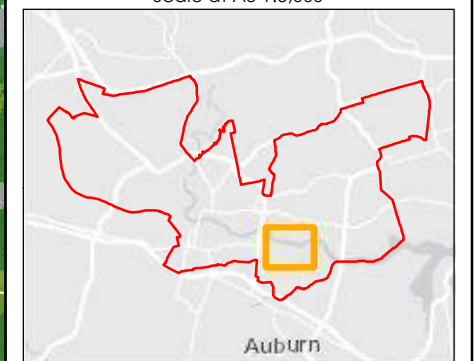
Figure G6.30

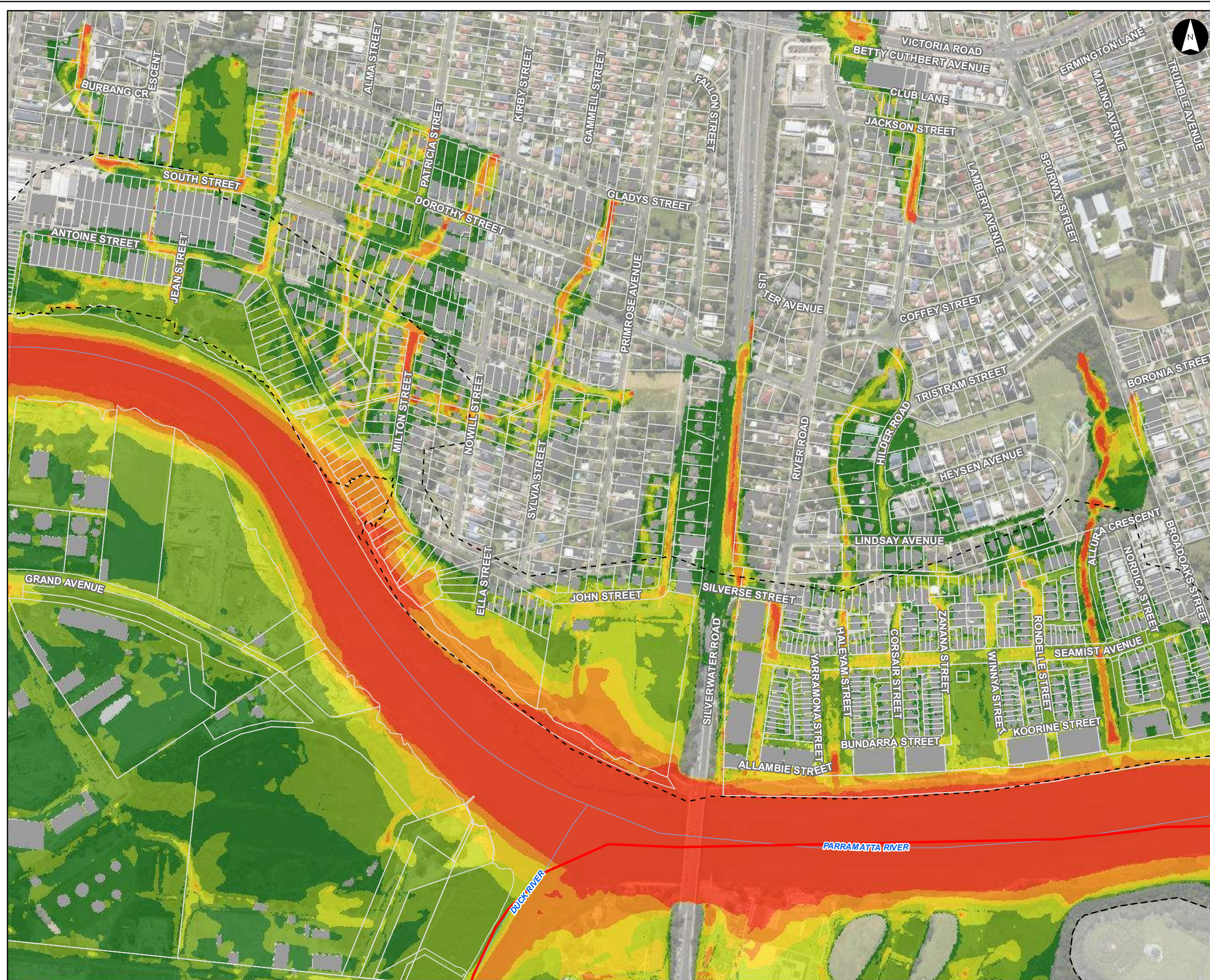
Notes:
 1. Coordinate System: GDA 1994 MGA Zone 56

References:
 1. Base data supplied by NSW SS and Esri
 2. Aerial imagery supplied by MetroMap
 3. Cadastre (2015) supplied by PCC



Scale at A3 1:5,000





Flood Velocity (PMF)

Parramatta River Flood Study

Project Code: 59916074
 Drawn By: AS, Checked By: TB
 Map: 59916074-GS-023-PMFVelocity5k.mxd
 Rev: 06
 Date: 2023-05-30

Legend

- Study Area
- Watercourse
- Cadastre
- Building Footprint
- Tuflow Model Extent

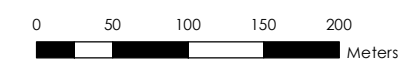
Max Max FFA PMF Flood Velocity (m/s)

- 0.0 - 0.5
- 0.5 - 1.0
- 1.0 - 1.5
- 1.5 - 2.0
- 2.0 - 3.0
- > 3.0

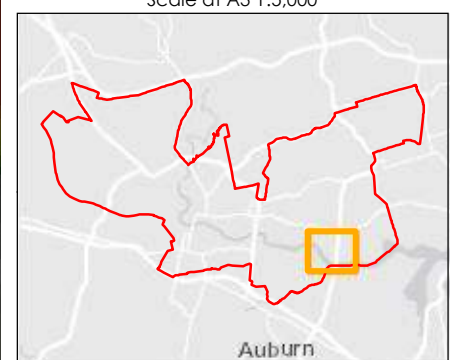
Figure G6.31

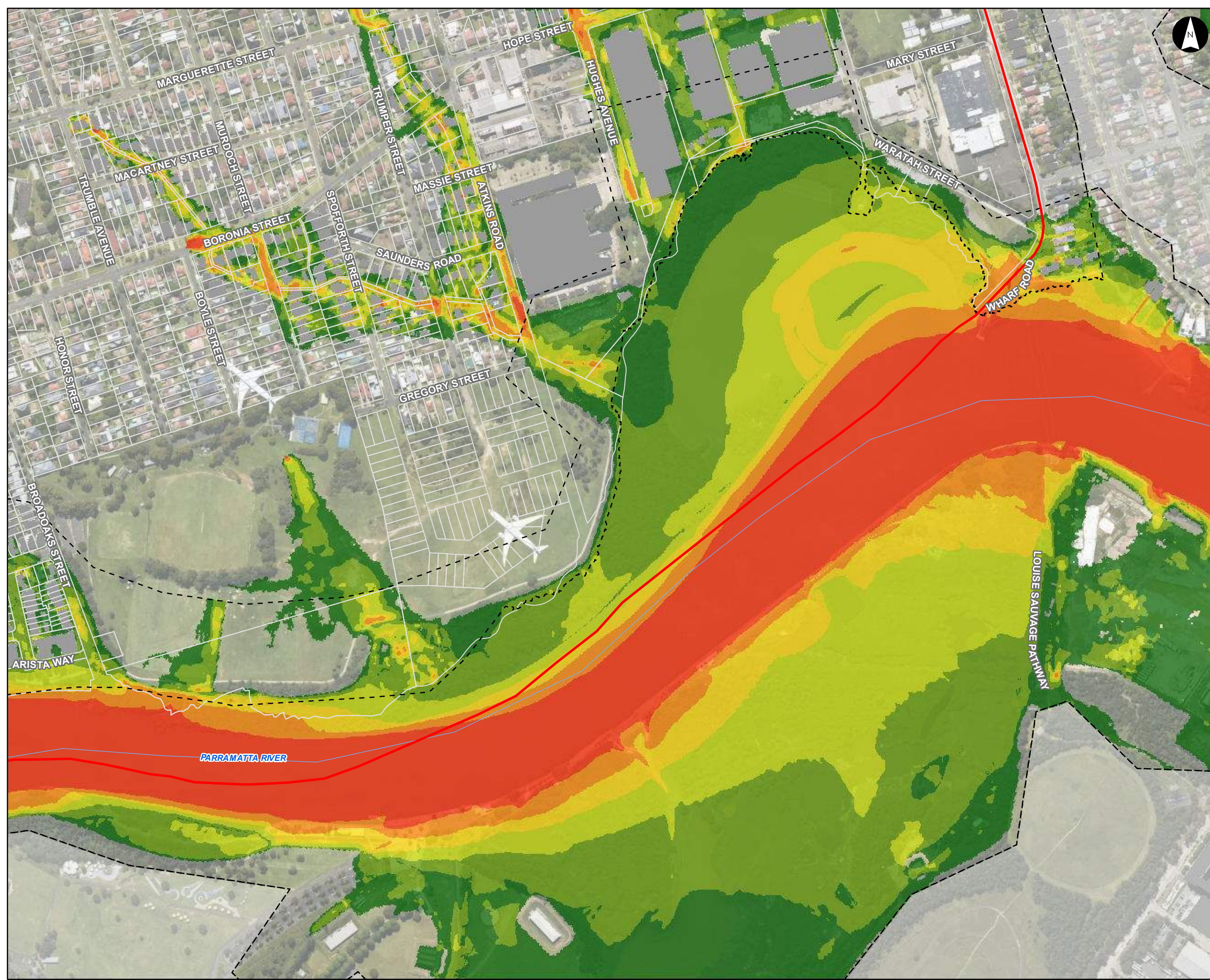
Notes:
 1. Coordinate System: GDA 1994 MGA Zone 56

References:
 1. Base data supplied by NSW SS and Esri
 2. Aerial imagery supplied by MetroMap
 3. Cadastre (2015) supplied by PCC



Scale at A3 1:5,000





Flood Velocity (PMF)

Parramatta River Flood Study

Project Code: 59916074
 Drawn By: AS, Checked By: TB
 Map: 59916074-GS-023-PMFVelocity5k.mxd
 Rev: 06
 Date: 2023-05-30

Legend

- Study Area
- Watercourse
- Cadastre
- Building Footprint
- TufLOW Model Extent

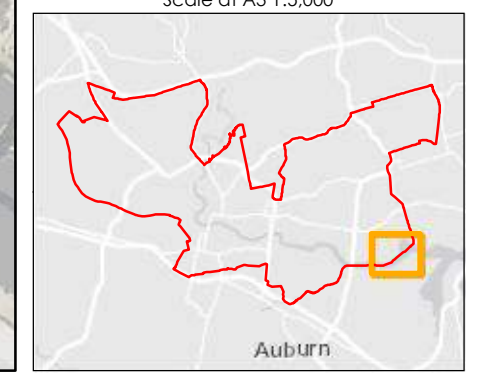
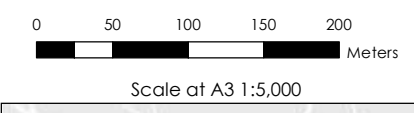
Max Max FFA PMF Flood Velocity (m/s)

- 0.0 - 0.5
- 0.5 - 1.0
- 1.0 - 1.5
- 1.5 - 2.0
- 2.0 - 3.0
- > 3.0

Figure G6.32

Notes:
 1. Coordinate System: GDA 1994 MGA Zone 56

References:
 1. Base data supplied by NSW SS and Esri
 2. Aerial imagery supplied by MetroMap
 3. Cadastre (2015) supplied by PCC





Flood Velocity (PMF)

Parramatta River Flood Study
 Project Code: 59916074
 Drawn By: AS, Checked By: TB
 Map: 59916074-GS-023-PMFVelocity5k.mxd
 Rev: 06
 Date: 2023-05-30

Legend

- Study Area
- Watercourse
- Cadastre
- Building Footprint
- Tuflow Model Extent

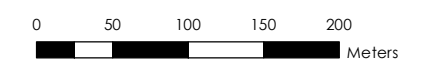
Max Max FFA PMF Flood Velocity (m/s)

- 0.0 - 0.5
- 0.5 - 1.0
- 1.0 - 1.5
- 1.5 - 2.0
- 2.0 - 3.0
- > 3.0

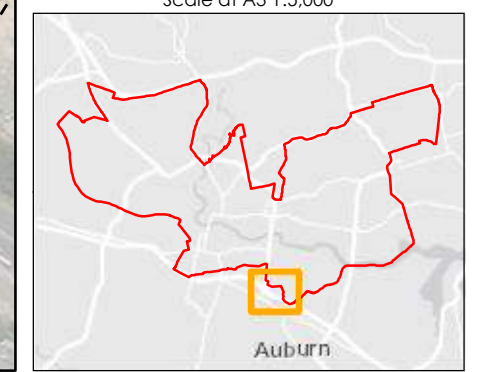
Figure G6.33

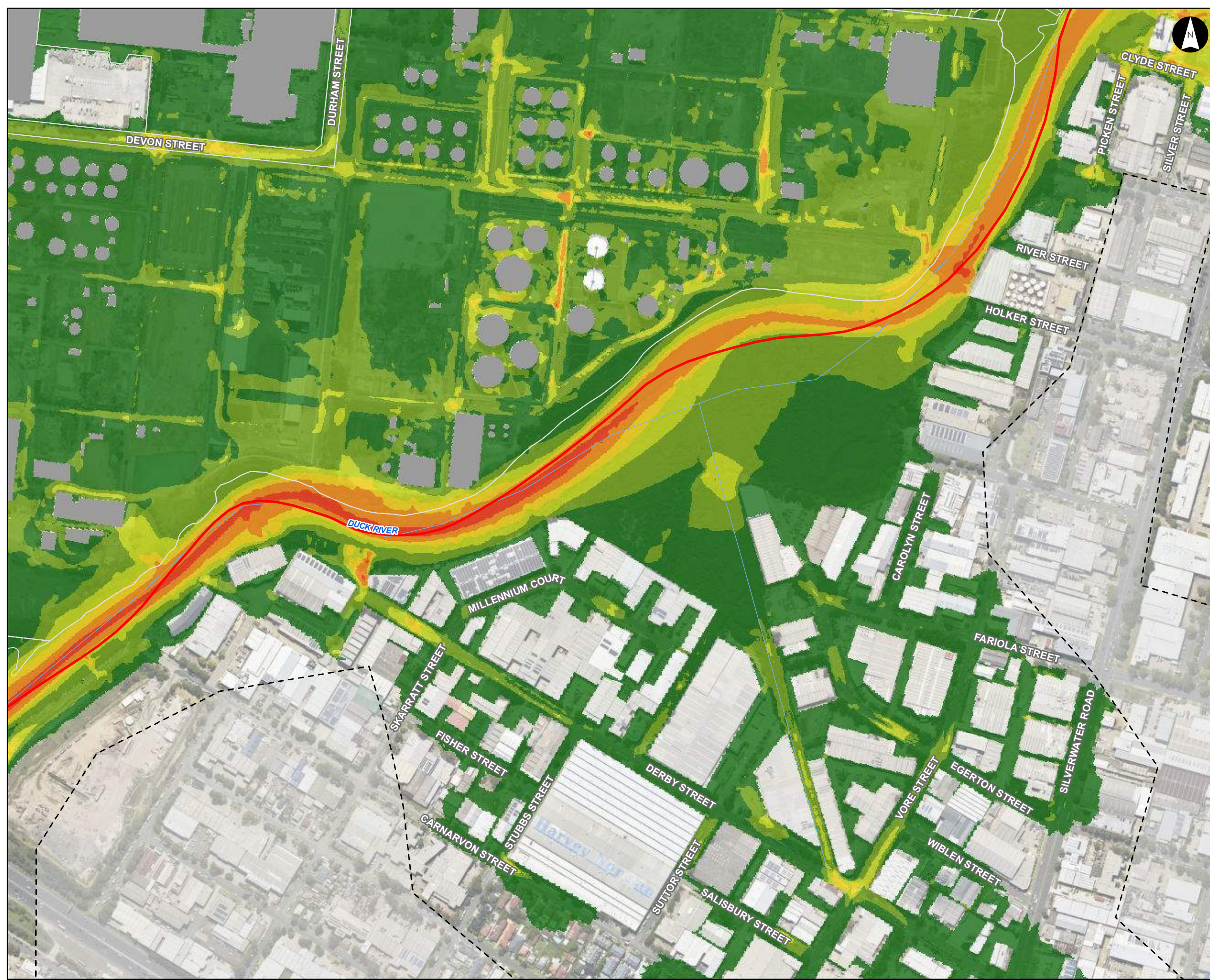
Notes:
 1. Coordinate System: GDA 1994 MGA Zone 56

- References:
1. Base data supplied by NSW SS and Esri
 2. Aerial imagery supplied by MetroMap
 3. Cadastre (2015) supplied by PCC



Scale at A3 1:5,000





Flood Velocity (PMF)

Parramatta River Flood Study

Project Code: 59916074
 Drawn By: AS, Checked By: TB
 Map: 59916074-GS-023-PMFVelocity5k.mxd
 Rev: 06
 Date: 2023-05-30

Legend

- Study Area
- Watercourse
- Cadastre
- Building Footprint
- TufLOW Model Extent

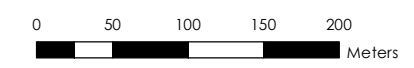
Max Max FFA PMF Flood Velocity (m/s)

- 0.0 - 0.5
- 0.5 - 1.0
- 1.0 - 1.5
- 1.5 - 2.0
- 2.0 - 3.0
- > 3.0

Figure G6.34

Notes:
 1. Coordinate System: GDA 1994 MGA Zone 56

References:
 1. Base data supplied by NSW SS and Esri
 2. Aerial imagery supplied by MetroMap
 3. Cadastre (2015) supplied by PCC



Scale at A3 1:5,000

