



### Flood Depth (FFA 1% AEP)

Parramatta River Flood Study  
 Project Code: 59916074 / 304600102  
 Drawn By: AS  
 Map: 59916074-GS-006-100yDepth5k.mxd  
 Rev: 09  
 Date: 2024-06-20

#### Legend

- Study Area
- Watercourse
- Cadastre
- Building Footprint
- Tuflow Model Extent

#### Local upstream overland flow - obtained from preliminary ARR87 ROG

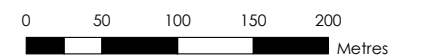
- 0-50mm
- 50-100mm
- 100-150mm
- >150mm

#### Max Max FFA 1% AEP Flood Depth (m)

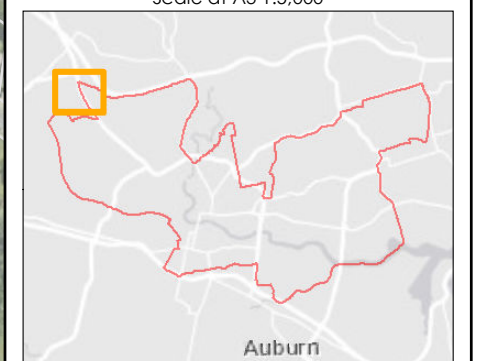
- 0.00 - 0.15
- 0.15 - 0.30
- 0.30 - 0.50
- 0.50 - 0.70
- 0.70 - 1.00
- 1.00 - 1.50
- >1.50

**Figure F5.1**

- Notes:  
 1. Coordinate System: GDA 1994 MGA Zone 56  
 References:  
 1. Base data supplied by NSW SS and Esri  
 2. Aerial imagery supplied by MetroMap  
 3. Cadastre (2015) supplied by PCC



Scale at A3 1:5,000





### Flood Depth (FFA 1% AEP)

Parramatta River Flood Study  
 Project Code: 59916074 / 304600102  
 Drawn By: AS  
 Map: 59916074-GS-006-100yDepth5k.mxd  
 Rev: 09  
 Date: 2024-06-20

#### Legend

- Study Area
  - Watercourse
  - Cadastre
  - Building Footprint
  - Tuflow Model Extent
- Local upstream overland flow - obtained from preliminary ARR87 ROG**

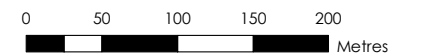
- 0-50mm
- 50-100mm
- 100-150mm
- >150mm

#### Max Max FFA 1% AEP Flood Depth (m)

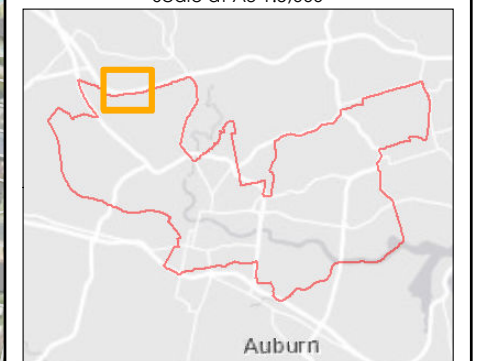
- 0.00 - 0.15
- 0.15 - 0.30
- 0.30 - 0.50
- 0.50 - 0.70
- 0.70 - 1.00
- 1.00 - 1.50
- >1.50

**Figure F5.2**

- Notes:  
 1. Coordinate System: GDA 1994 MGA Zone 56  
 References:  
 1. Base data supplied by NSW SS and Esri  
 2. Aerial imagery supplied by MetroMap  
 3. Cadastre (2015) supplied by PCC



Scale at A3 1:5,000





### Flood Depth (FFA 1% AEP)

Parramatta River Flood Study  
 Project Code: 59916074 / 304600102  
 Drawn By: AS  
 Map: 59916074-GS-006-100yDepth5k.mxd  
 Rev: 09  
 Date: 2024-06-20

#### Legend

- Study Area
  - Watercourse
  - Cadastre
  - Building Footprint
  - Tuflow Model Extent
- Local upstream overland flow - obtained from preliminary ARR87 ROG**

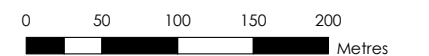
- 0-50mm
- 50-100mm
- 100-150mm
- >150mm

#### Max Max FFA 1% AEP Flood Depth (m)

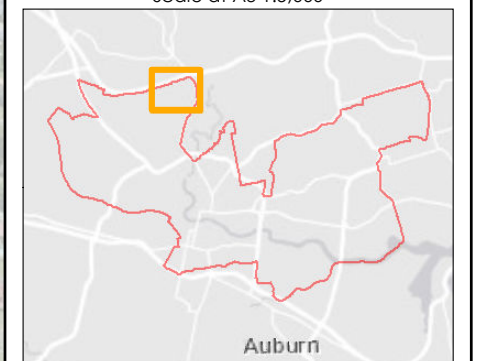
- 0.00 - 0.15
- 0.15 - 0.30
- 0.30 - 0.50
- 0.50 - 0.70
- 0.70 - 1.00
- 1.00 - 1.50
- >1.50

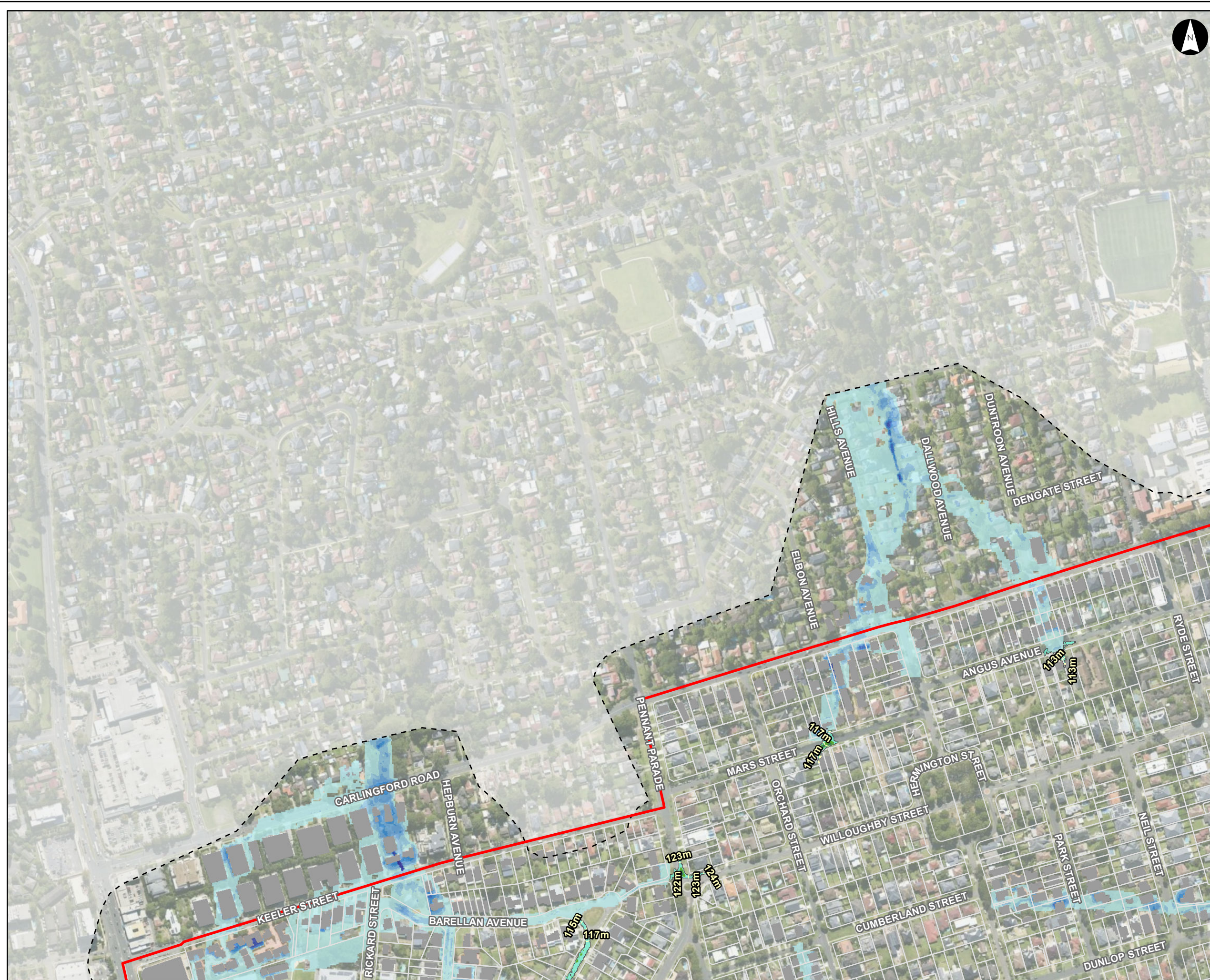
**Figure F5.3**

- Notes:  
 1. Coordinate System: GDA 1994 MGA Zone 56  
 References:  
 1. Base data supplied by NSW SS and Esri  
 2. Aerial imagery supplied by MetroMap  
 3. Cadastre (2015) supplied by PCC



Scale at A3 1:5,000





### Flood Depth (FFA 1% AEP)

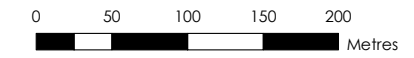
Parramatta River Flood Study  
 Project Code: 59916074 / 304600102  
 Drawn By: AS  
 Map: 59916074-GS-006-100yDepth5k.mxd  
 Rev: 09  
 Date: 2024-06-20

#### Legend

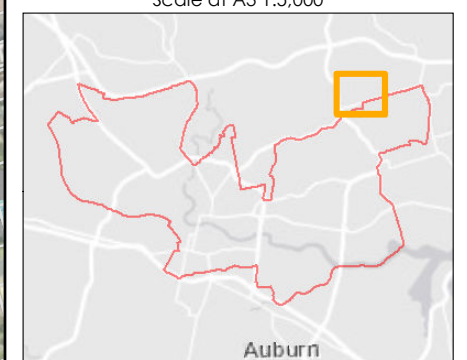
- Study Area
  - Cadastre
  - Building Footprint
  - Tuflow Model Extent
- Local upstream overland flow - obtained from preliminary ARR87 ROG**
- 0-50mm
  - 50-100mm
  - 100-150mm
  - >150mm
- Max Max FFA 1% AEP Flood Depth (m)**
- 0.00 - 0.15
  - 0.15 - 0.30
  - 0.30 - 0.50
  - 0.50 - 0.70
  - 0.70 - 1.00
  - 1.00 - 1.50
  - >1.50

**Figure F5.4**

Notes:  
 1. Coordinate System: GDA 1994 MGA Zone 56  
 References:  
 1. Base data supplied by NSW SS and Esri  
 2. Aerial imagery supplied by MetroMap  
 3. Cadastre (2015) supplied by PCC



Scale at A3 1:5,000





### Flood Depth (FFA 1% AEP)

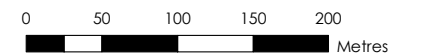
Parramatta River Flood Study  
 Project Code: 59916074 / 304600102  
 Drawn By: AS  
 Map: 59916074-GS-006-100yDepth5k.mxd  
 Rev: 09  
 Date: 2024-06-20

#### Legend

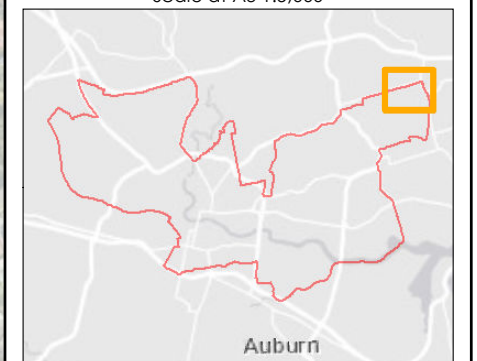
- Study Area
  - Cadastre
  - Building Footprint
  - Tuflow Model Extent
- Local upstream overland flow - obtained from preliminary ARR87 ROG**
- 0-50mm
  - 50-100mm
  - 100-150mm
  - >150mm
- Max Max FFA 1% AEP Flood Depth (m)**
- 0.00 - 0.15
  - 0.15 - 0.30
  - 0.30 - 0.50
  - 0.50 - 0.70
  - 0.70 - 1.00
  - 1.00 - 1.50
  - >1.50

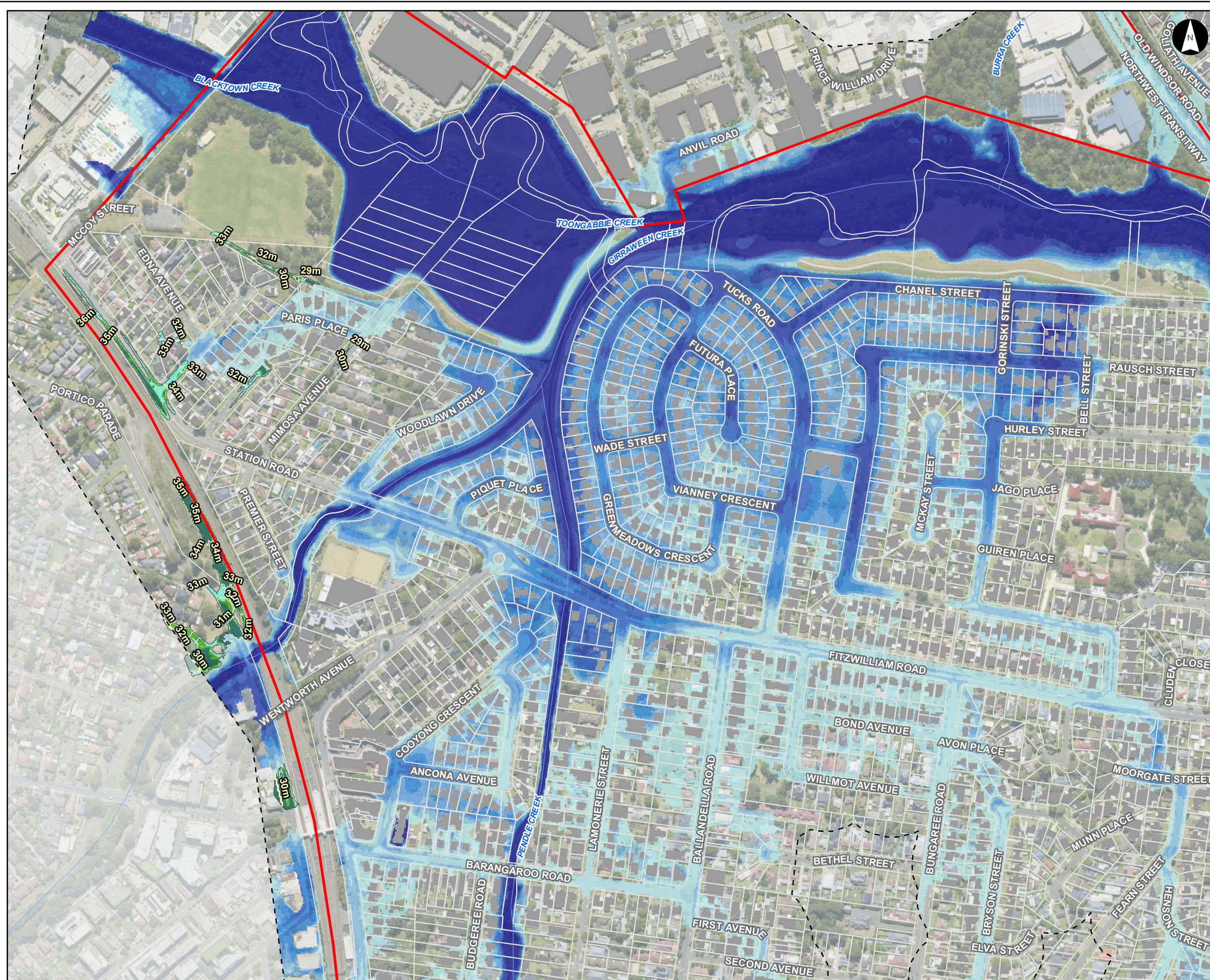
**Figure F5.5**

- Notes:
- Coordinate System: GDA 1994 MGA Zone 56
- References:
- Base data supplied by NSW SS and Esri
  - Aerial imagery supplied by MetroMap
  - Cadastre (2015) supplied by PCC



Scale at A3 1:5,000





**Flood Depth (FFA 1% AEP)**

Parramatta River Flood Study

Project Code: 59916074 / 304600102  
 Drawn By: AS  
 Map: 59916074-GS-006-100yDepth5k.mxd  
 Rev: 09  
 Date: 2024-06-20

- Legend**
- Study Area
  - Watercourse
  - Cadastre
  - Building Footprint
  - Tuflow Model Extent
- Local upstream overland flow - obtained from preliminary ARR87 ROG**
- 0-50mm
  - 50-100mm
  - 100-150mm
  - >150mm

- Max Max FFA 1% AEP Flood Depth (m)**
- 0.00 - 0.15
  - 0.15 - 0.30
  - 0.30 - 0.50
  - 0.50 - 0.70
  - 0.70 - 1.00
  - 1.00 - 1.50
  - >1.50

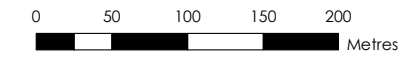
**Figure F5.6**

Notes:

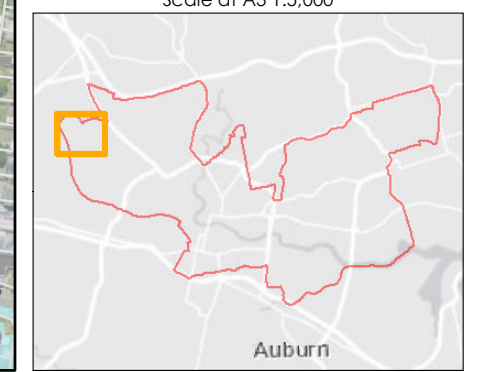
1. Coordinate System: GDA 1994 MGA Zone 56

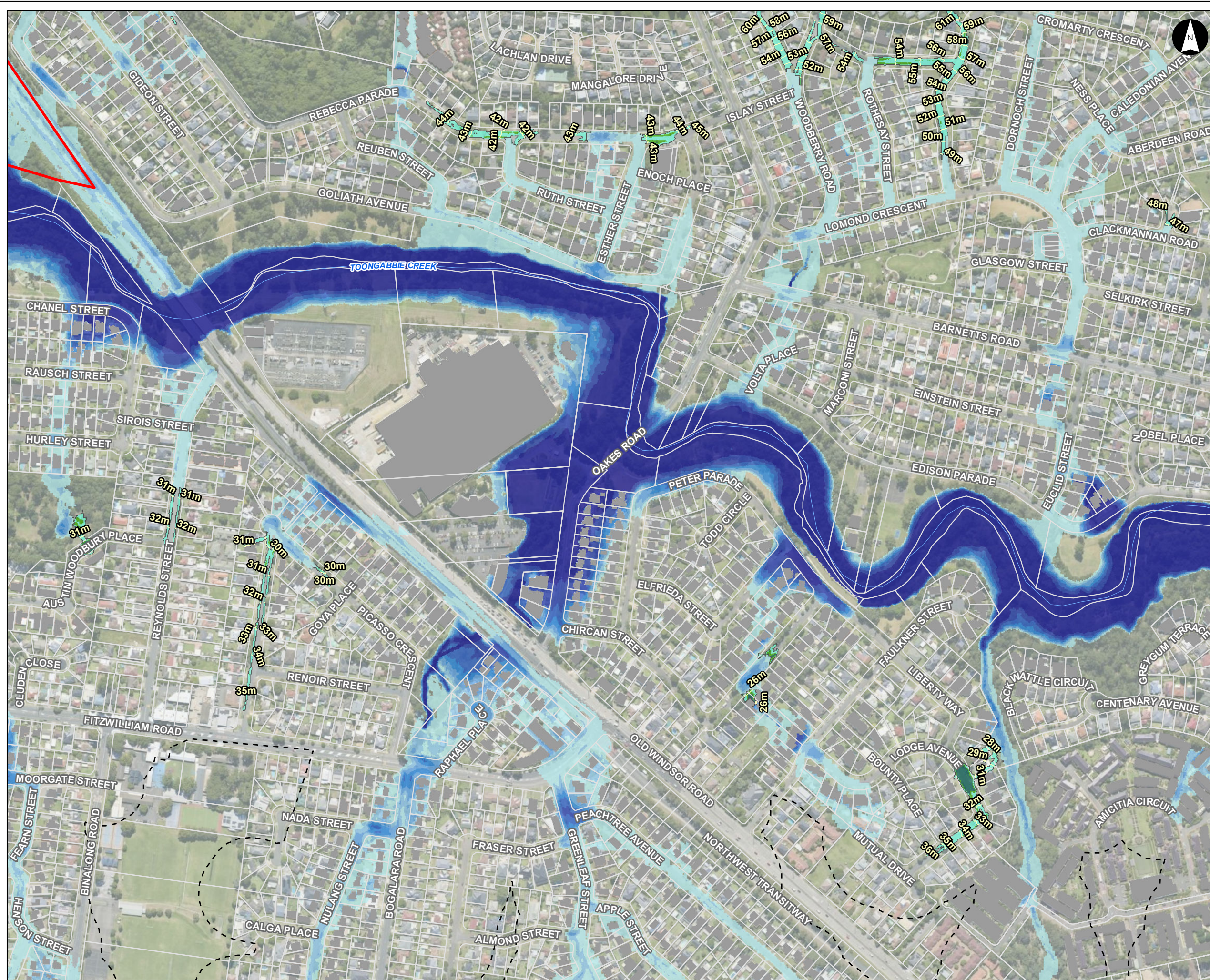
References:

1. Base data supplied by NSW SS and Esri
2. Aerial imagery supplied by MetroMap
3. Cadastre (2015) supplied by PCC



Scale at A3 1:5,000





### Flood Depth (FFA 1% AEP)

Parramatta River Flood Study  
 Project Code: 59916074 / 304600102  
 Drawn By: AS  
 Map: 59916074-GS-006-100yDepth5k.mxd  
 Rev: 09  
 Date: 2024-06-20

#### Legend

- Study Area
- Watercourse
- Cadastre
- Building Footprint
- Tufflow Model Extent

#### Local upstream overland flow - obtained from preliminary ARR87 ROG

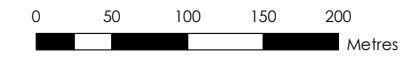
- 0-50mm
- 50-100mm
- 100-150mm
- >150mm

#### Max Max FFA 1% AEP Flood Depth (m)

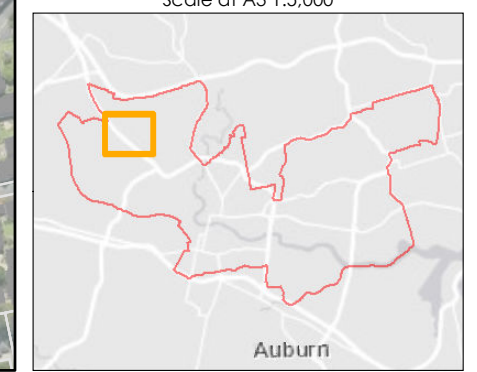
- 0.00 - 0.15
- 0.15 - 0.30
- 0.30 - 0.50
- 0.50 - 0.70
- 0.70 - 1.00
- 1.00 - 1.50
- >1.50

**Figure F5.7**

- Notes:
1. Coordinate System: GDA 1994 MGA Zone 56
- References:
1. Base data supplied by NSW SS and Esri
  2. Aerial imagery supplied by MetroMap
  3. Cadastre (2015) supplied by PCC

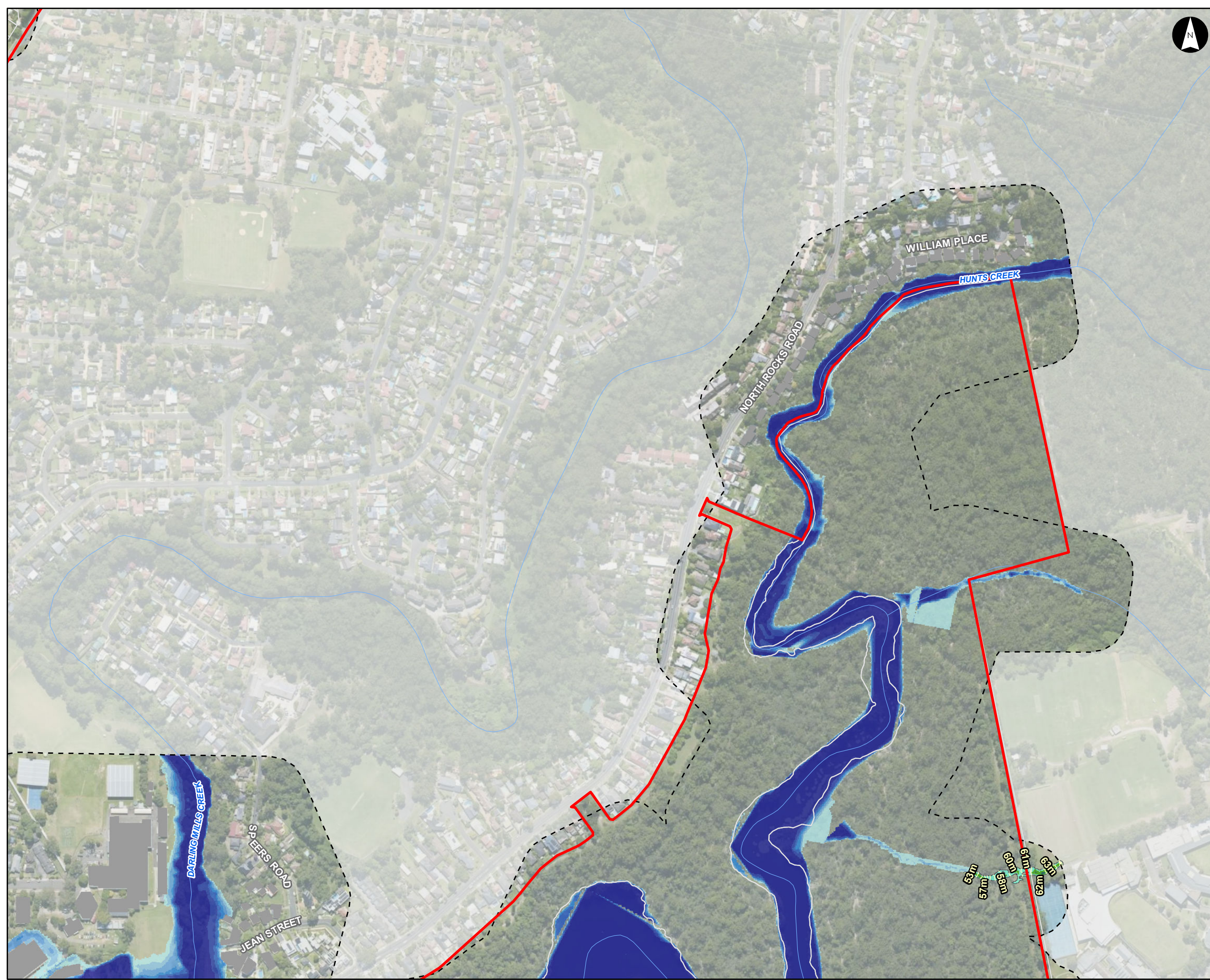


Scale at A3 1:5,000









### Flood Depth (FFA 1% AEP)

Parramatta River Flood Study

Project Code: 59916074 / 304600102  
 Drawn By: AS  
 Map: 59916074-GS-006-100yDepth5k.mxd  
 Rev: 09  
 Date: 2024-06-20

#### Legend

- Study Area
- Watercourse
- Cadastre
- Building Footprint
- Tuflow Model Extent

#### Local upstream overland flow - obtained from preliminary ARR87 ROG

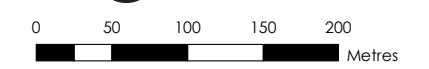
- 0-50mm
- 50-100mm
- 100-150mm
- >150mm

#### Max Max FFA 1% AEP Flood Depth (m)

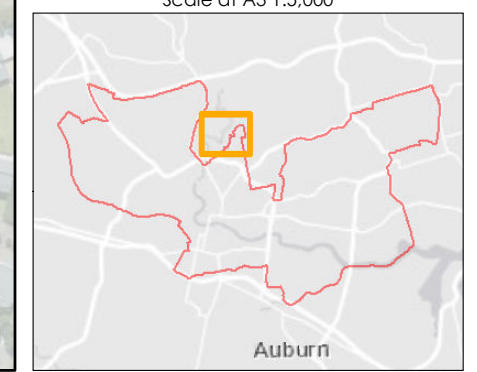
- 0.00 - 0.15
- 0.15 - 0.30
- 0.30 - 0.50
- 0.50 - 0.70
- 0.70 - 1.00
- 1.00 - 1.50
- >1.50

**Figure F5.9**

- Notes:
1. Coordinate System: GDA 1994 MGA Zone 56
- References:
1. Base data supplied by NSW SS and Esri
  2. Aerial imagery supplied by MetroMap
  3. Cadastre (2015) supplied by PCC



Scale at A3 1:5,000





### Flood Depth (FFA 1% AEP)

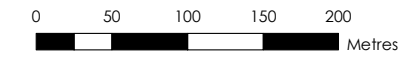
Parramatta River Flood Study  
 Project Code: 59916074 / 304600102  
 Drawn By: AS  
 Map: 59916074-GS-006-100yDepth5k.mxd  
 Rev: 09  
 Date: 2024-06-20

#### Legend

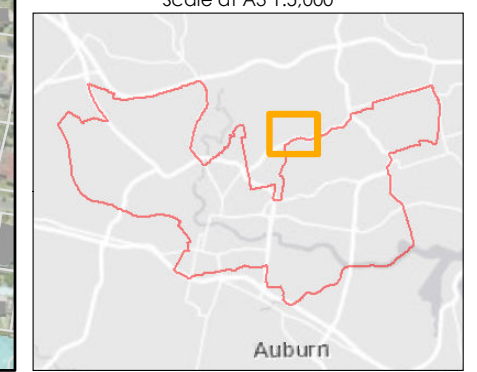
- Study Area
  - Watercourse
  - Cadastre
  - Building Footprint
  - Tuflow Model Extent
- Local upstream overland flow - obtained from preliminary ARR87 ROG**
- 0-50mm
  - 50-100mm
  - 100-150mm
  - >150mm
- Max Max FFA 1% AEP Flood Depth (m)**
- 0.00 - 0.15
  - 0.15 - 0.30
  - 0.30 - 0.50
  - 0.50 - 0.70
  - 0.70 - 1.00
  - 1.00 - 1.50
  - >1.50

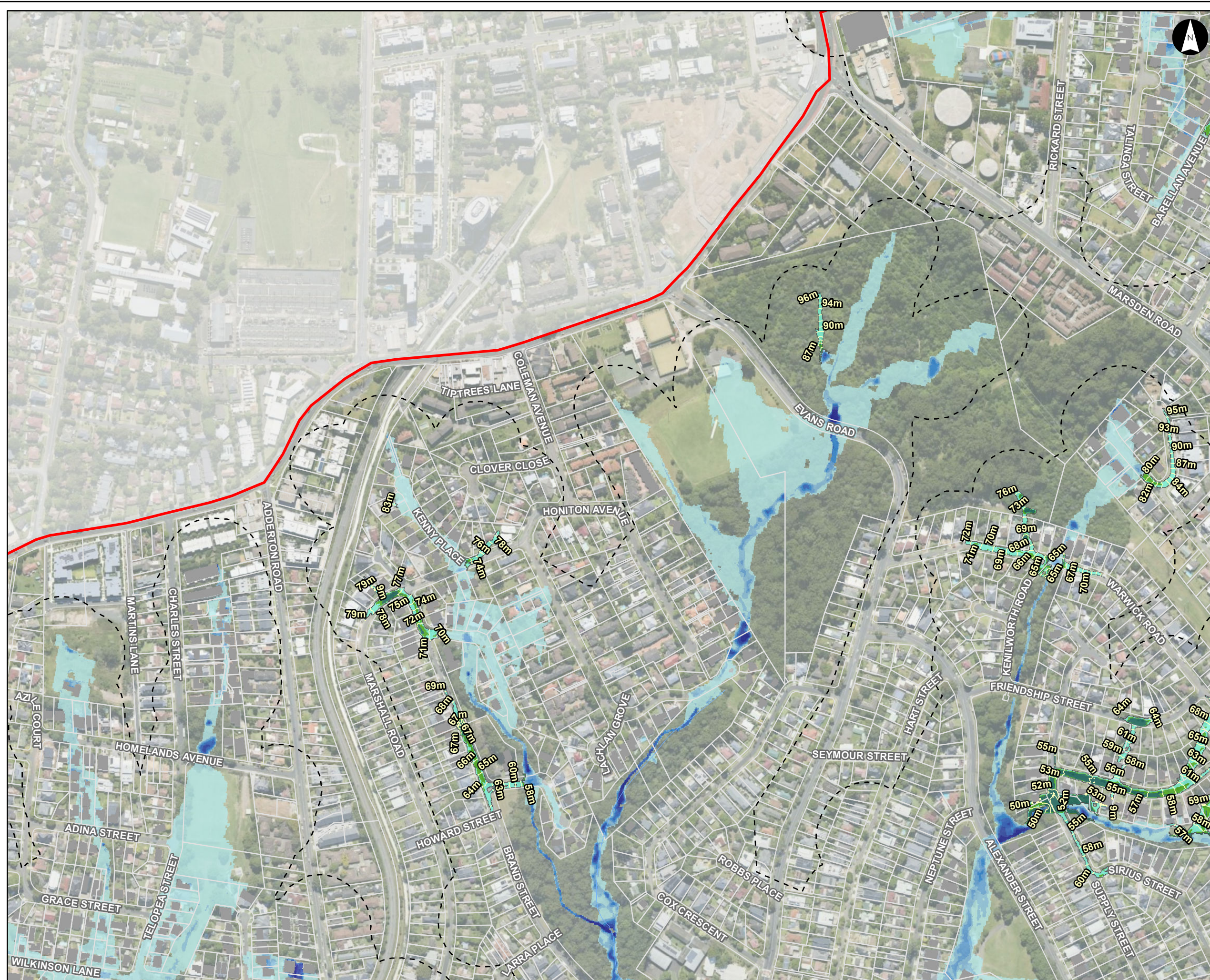
**Figure F5.10**

- Notes:
1. Coordinate System: GDA 1994 MGA Zone 56
- References:
1. Base data supplied by NSW SS and Esri
  2. Aerial imagery supplied by MetroMap
  3. Cadastre (2015) supplied by PCC



Scale at A3 1:5,000





**Flood Depth (FFA 1% AEP)**

Parramatta River Flood Study

Project Code: 59916074 / 304600102  
 Drawn By: AS  
 Map: 59916074-GS-006-100yDepth5k.mxd  
 Rev: 09  
 Date: 2024-06-20

**Legend**

- Study Area
- Watercourse
- Cadastre
- Building Footprint
- Tuflow Model Extent

**Local upstream overland flow - obtained from preliminary ARR87 ROG**

- 0-50mm
- 50-100mm
- 100-150mm
- >150mm

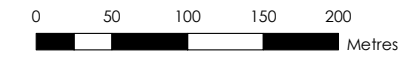
**Max Max FFA 1% AEP Flood Depth (m)**

- 0.00 - 0.15
- 0.15 - 0.30
- 0.30 - 0.50
- 0.50 - 0.70
- 0.70 - 1.00
- 1.00 - 1.50
- >1.50

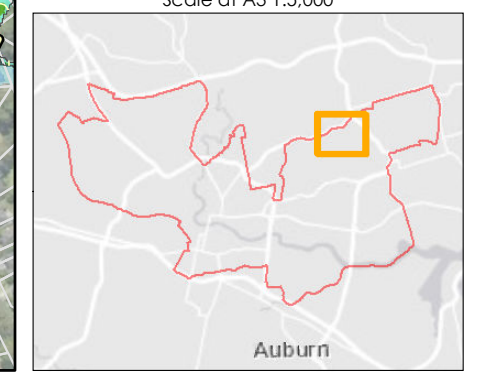
**Figure F5.11**

Notes:

- Coordinate System: GDA 1994 MGA Zone 56
- References:
  - Base data supplied by NSW SS and Esri
  - Aerial imagery supplied by MetroMap
  - Cadastre (2015) supplied by PCC



Scale at A3 1:5,000





### Flood Depth (FFA 1% AEP)

Parramatta River Flood Study  
 Project Code: 59916074 / 304600102  
 Drawn By: AS  
 Map: 59916074-GS-006-100yDepth5k.mxd  
 Rev: 09  
 Date: 2024-06-20

#### Legend

- Study Area
- Watercourse
- Cadastre
- Building Footprint
- Tufflow Model Extent

#### Local upstream overland flow - obtained from preliminary ARR87 ROG

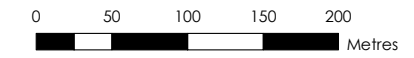
- 0-50mm
- 50-100mm
- 100-150mm
- >150mm

#### Max Max FFA 1% AEP Flood Depth (m)

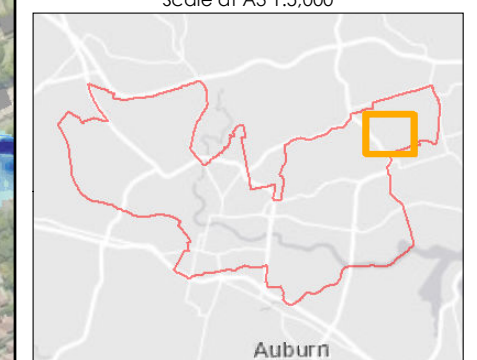
- 0.00 - 0.15
- 0.15 - 0.30
- 0.30 - 0.50
- 0.50 - 0.70
- 0.70 - 1.00
- 1.00 - 1.50
- >1.50

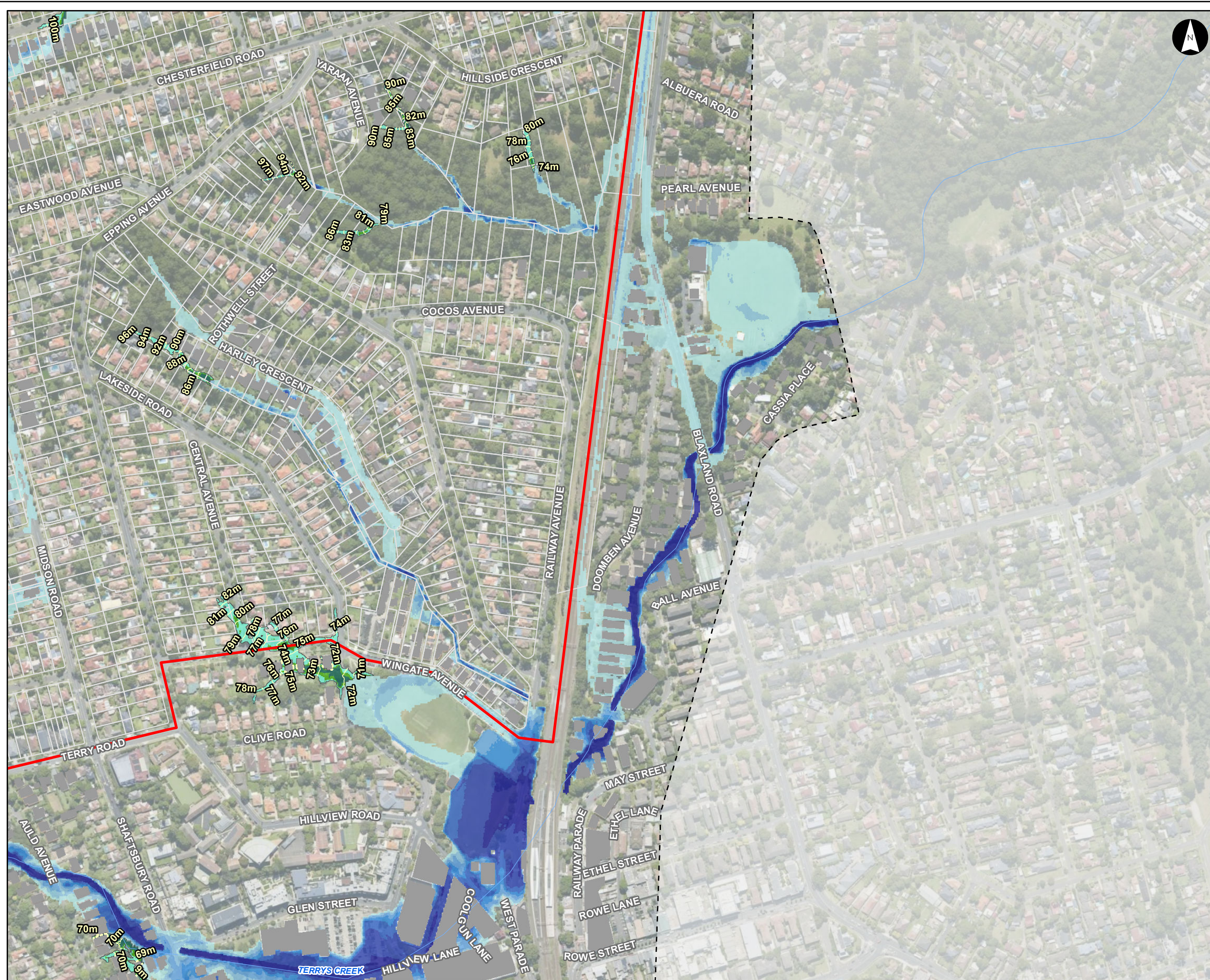
**Figure F5.12**

Notes:  
 1. Coordinate System: GDA 1994 MGA Zone 56  
 References:  
 1. Base data supplied by NSW SS and Esri  
 2. Aerial imagery supplied by MetroMap  
 3. Cadastre (2015) supplied by PCC



Scale at A3 1:5,000





### Flood Depth (FFA 1% AEP)

Parramatta River Flood Study  
 Project Code: 59916074 / 304600102  
 Drawn By: AS  
 Map: 59916074-GS-006-100yDepth5k.mxd  
 Rev: 09  
 Date: 2024-06-20

#### Legend

- Study Area
- Watercourse
- Cadastre
- Building Footprint
- Tuflow Model Extent

#### Local upstream overland flow - obtained from preliminary ARR87 ROG

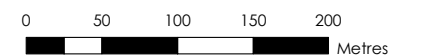
- 0-50mm
- 50-100mm
- 100-150mm
- >150mm

#### Max Max FFA 1% AEP Flood Depth (m)

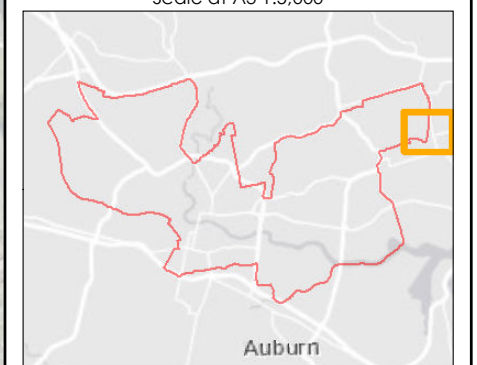
- 0.00 - 0.15
- 0.15 - 0.30
- 0.30 - 0.50
- 0.50 - 0.70
- 0.70 - 1.00
- 1.00 - 1.50
- >1.50

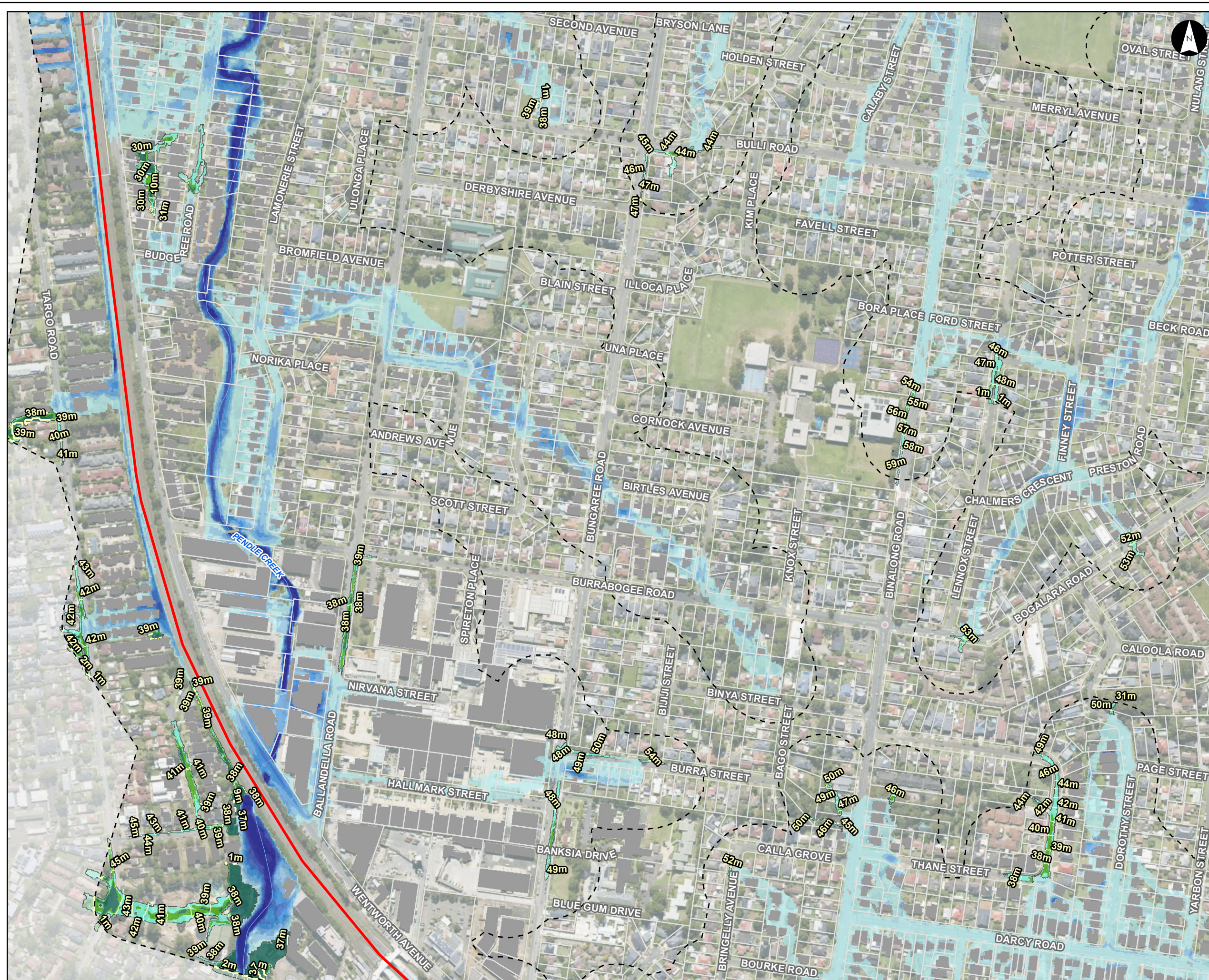
**Figure F5.13**

- Notes:  
 1. Coordinate System: GDA 1994 MGA Zone 56  
 References:  
 1. Base data supplied by NSW SS and Esri  
 2. Aerial imagery supplied by MetroMap  
 3. Cadastre (2015) supplied by PCC



Scale at A3 1:5,000





**Flood Depth (FFA 1% AEP)**

Parramatta River Flood Study

Project Code: 59916074 / 304600102  
 Drawn By: AS  
 Map: 59916074-GS-006-100yDepth5k.mxd  
 Rev: 09  
 Date: 2024-06-20

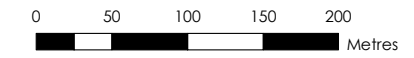
- Legend**
- Study Area
  - Watercourse
  - Cadastre
  - Building Footprint
  - Tuflow Model Extent

- Local upstream overland flow - obtained from preliminary ARR87 ROG**
- 0-50mm
  - 50-100mm
  - 100-150mm
  - >150mm

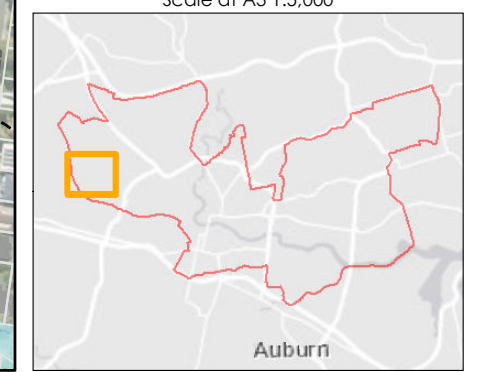
- Max Max FFA 1% AEP Flood Depth (m)**
- 0.00 - 0.15
  - 0.15 - 0.30
  - 0.30 - 0.50
  - 0.50 - 0.70
  - 0.70 - 1.00
  - 1.00 - 1.50
  - >1.50

**Figure F5.14**

Notes:  
 1. Coordinate System: GDA 1994 MGA Zone 56  
 References:  
 1. Base data supplied by NSW SS and Esri  
 2. Aerial imagery supplied by MetroMap  
 3. Cadastre (2015) supplied by PCC



Scale at A3 1:5,000





### Flood Depth (FFA 1% AEP)

Parramatta River Flood Study  
 Project Code: 59916074 / 304600102  
 Drawn By: AS  
 Map: 59916074-GS-006-100yDepth5k.mxd  
 Rev: 09  
 Date: 2024-06-20

#### Legend

- Study Area
- Watercourse
- Cadastre
- Building Footprint
- Tufflow Model Extent

#### Local upstream overland flow - obtained from preliminary ARR87 ROG

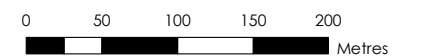
- 0-50mm
- 50-100mm
- 100-150mm
- >150mm

#### Max Max FFA 1% AEP Flood Depth (m)

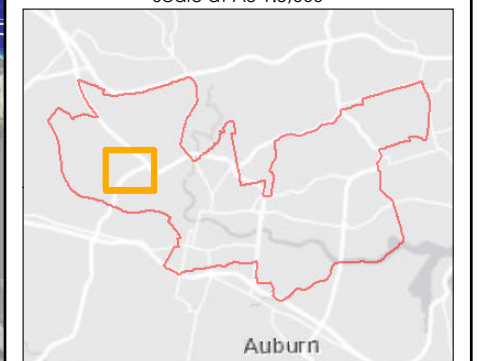
- 0.00 - 0.15
- 0.15 - 0.30
- 0.30 - 0.50
- 0.50 - 0.70
- 0.70 - 1.00
- 1.00 - 1.50
- >1.50

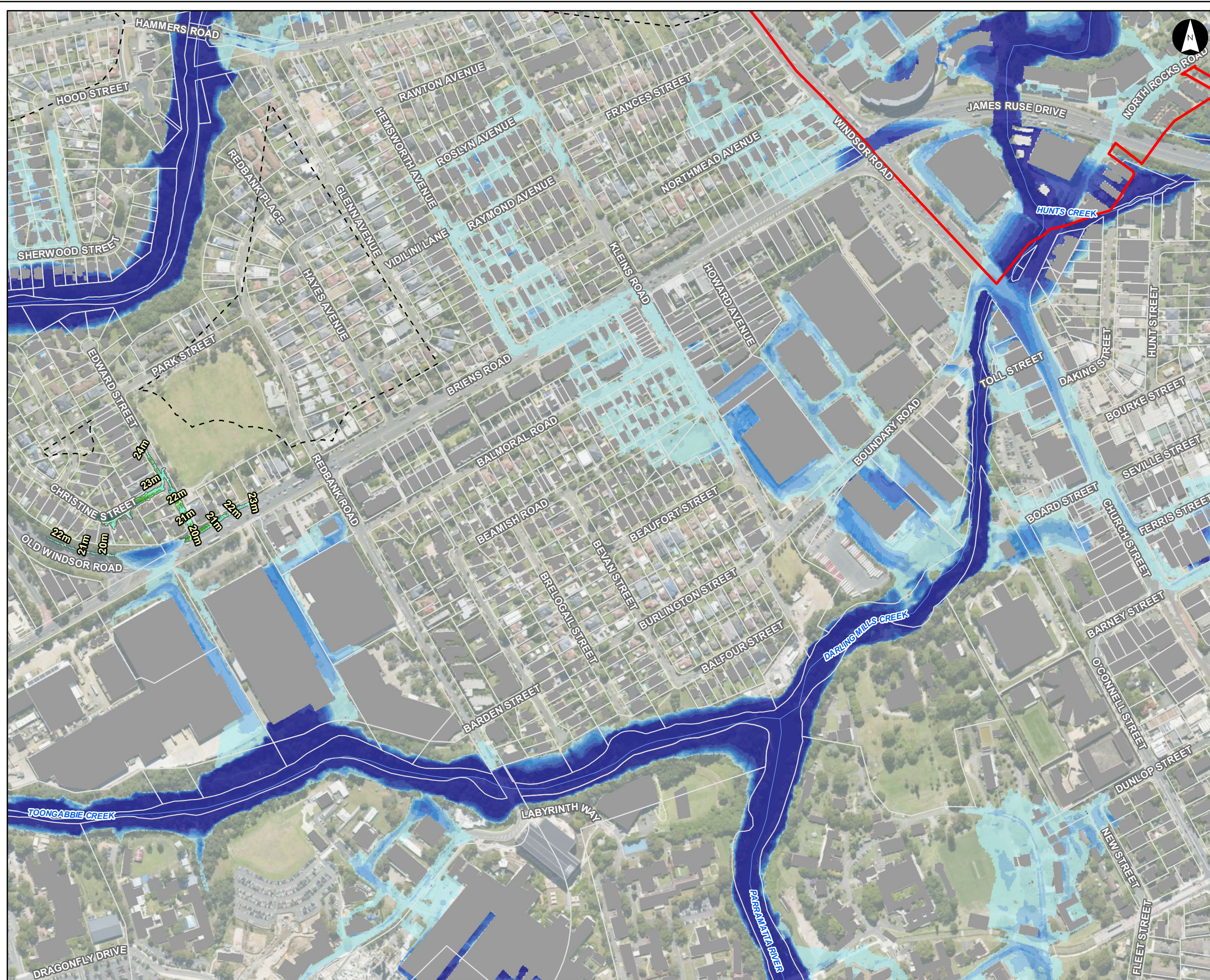
**Figure F5.15**

Notes:  
 1. Coordinate System: GDA 1994 MGA Zone 56  
 References:  
 1. Base data supplied by NSW SS and Esri  
 2. Aerial imagery supplied by MetroMap  
 3. Cadastre (2015) supplied by PCC



Scale at A3 1:5,000





**Flood Depth (FFA 1% AEP)**  
 Parramatta River Flood Study  
 Project Code: 59916074 / 304600102  
 Drawn By: AS  
 Map: 59916074-GS-006-100yDepth5k.mxd  
 Rev: 09  
 Date: 2024-06-20

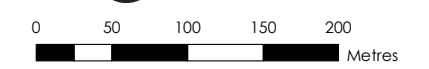
- Legend**
- Study Area
  - Watercourse
  - Cadastre
  - Building Footprint
  - Tuflow Model Extent

- Local upstream overland flow - obtained from preliminary ARR87 ROG**
- 0-50mm
  - 50-100mm
  - 100-150mm
  - >150mm

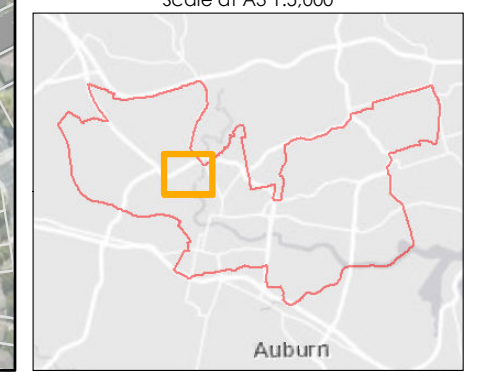
- Max Max FFA 1% AEP Flood Depth (m)**
- 0.00 - 0.15
  - 0.15 - 0.30
  - 0.30 - 0.50
  - 0.50 - 0.70
  - 0.70 - 1.00
  - 1.00 - 1.50
  - >1.50

**Figure F5.16**

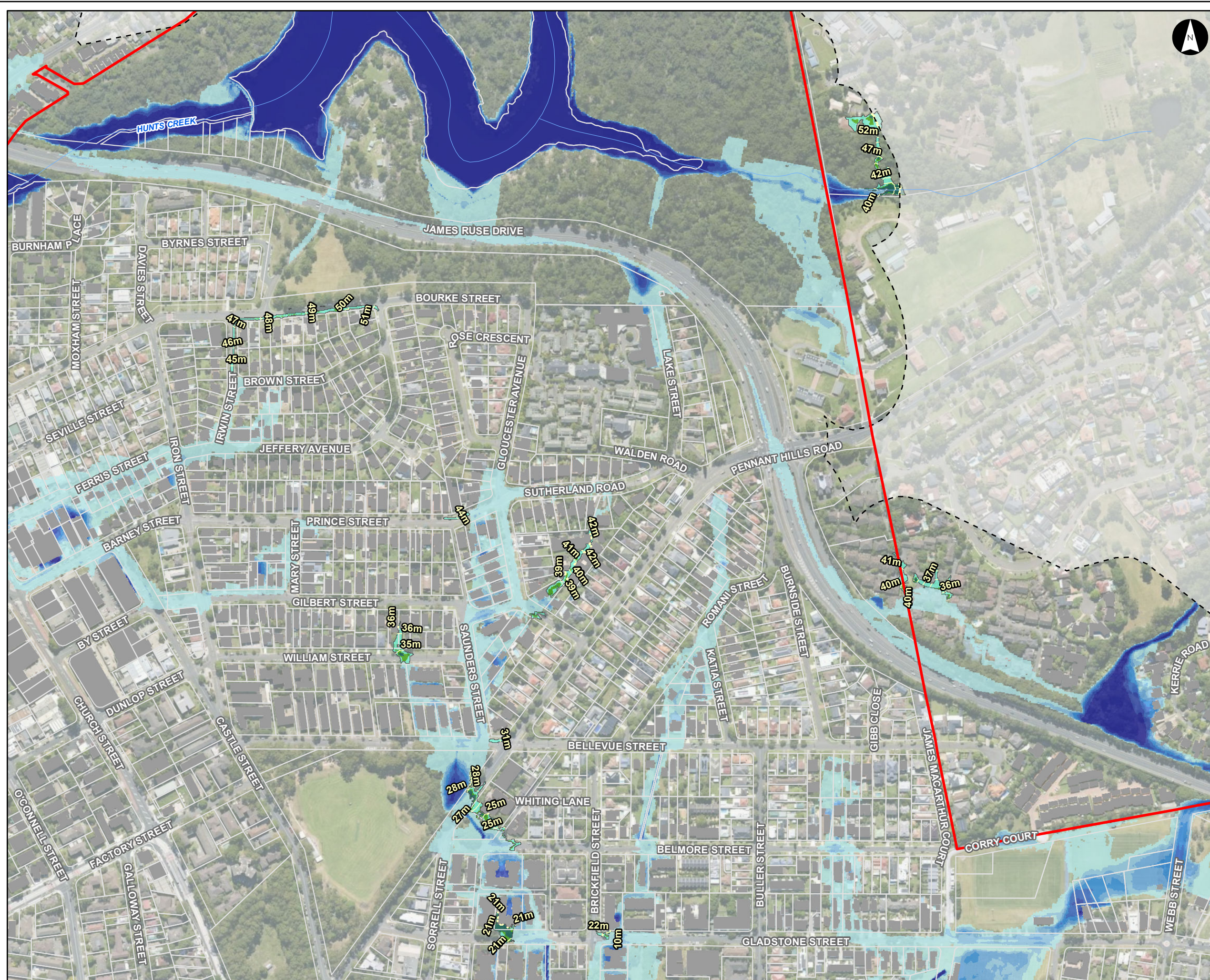
Notes:  
 1. Coordinate System: GDA 1994 MGA Zone 56  
 References:  
 1. Base data supplied by NSW SS and Esri  
 2. Aerial imagery supplied by MetroMap  
 3. Cadastre (2015) supplied by PCC



Scale at A3 1:5,000







### Flood Depth (FFA 1% AEP)

Parramatta River Flood Study  
 Project Code: 59916074 / 304600102  
 Drawn By: AS  
 Map: 59916074-GS-006-100yDepth5k.mxd  
 Rev: 09  
 Date: 2024-06-20

#### Legend

- Study Area
- Watercourse
- Cadastre
- Building Footprint
- Tuflow Model Extent

#### Local upstream overland flow - obtained from preliminary ARR87 ROG

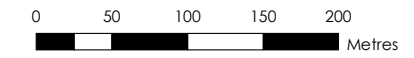
- 0-50mm
- 50-100mm
- 100-150mm
- >150mm

#### Max Max FFA 1% AEP Flood Depth (m)

- 0.00 - 0.15
- 0.15 - 0.30
- 0.30 - 0.50
- 0.50 - 0.70
- 0.70 - 1.00
- 1.00 - 1.50
- >1.50

**Figure F5.17**

- Notes:
1. Coordinate System: GDA 1994 MGA Zone 56
  - References:
  1. Base data supplied by NSW SS and Esri
  2. Aerial imagery supplied by MetroMap
  3. Cadastre (2015) supplied by PCC



Scale at A3 1:5,000

