

APPENDIX

O

EMERGENCY RESPONSE MAPS



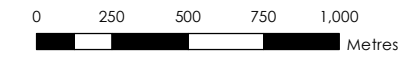
Areas of Significance

Parramatta River Flood Study
 Project Code: 59916074
 Drawn By: AS
 Map: 59916074-GS-107-
 EmergencyResponseAOIs.mxd
 Rev: 01
 Date: 2023-06-13

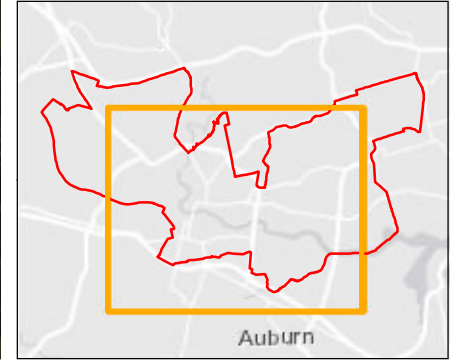
- Legend**
- Area of Significance
 - Watercourse
 - Cadastre

Figure 00

- Notes:
1. Coordinate System: GDA 1994 MGA Zone 56
- References:
1. Base data supplied by NSW SS and Esri
 2. Aerial imagery supplied by MetroMap
 3. Cadastre (2015) supplied by PCC



Scale at A3 1:25,000





PMF Flood Emergency Response Classification Camellia

Parramatta River Flood Study
 Project Code: 59916074
 Drawn By: AS
 Map: 59916074-GS-047-
 PMF_EmergencyResponse.mxd
 Rev: 04
 Date: 2023-06-13

- Legend**
- Area of Significance
 - Flood Depth Points
 - Watercourse
 - Evacuation Routes
 - Cadastre
- PMF Flood Planning Risk Identification**
- Indirectly Affected
 - Area with Overland Escape Route
 - High Flood Island
 - High Trapped Perimeter
 - Low Flood Island
 - Low Trapped Perimeter
 - Rising Road Access Area
 - Not Flood Affected

Figure O1.1

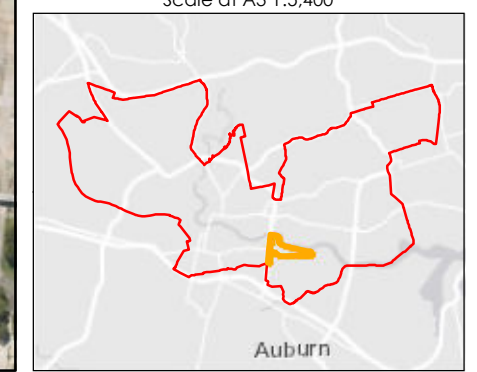
Notes:
 1. Coordinate System: GDA 1994 MGA Zone 56

References:
 1. Base data supplied by NSW SS and Esri
 2. Aerial imagery supplied by MetroMap
 3. Cadastre (2015) supplied by PCC

Stantec

0 30 60 90 120
 Metres

Scale at A3 1:5,400





1% AEP Flood Emergency Response Classification Camellia

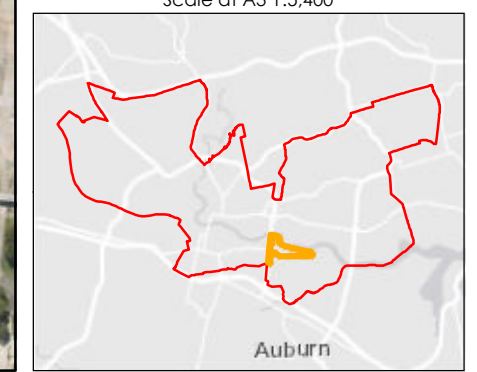
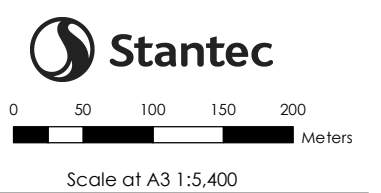
Parramatta River Flood Study
 Project Code: 59916074
 Drawn By: AS
 Map: 59916074-GS-048-100y_EmergencyResponse.mxd
 Rev: 04
 Date: 2023-06-13

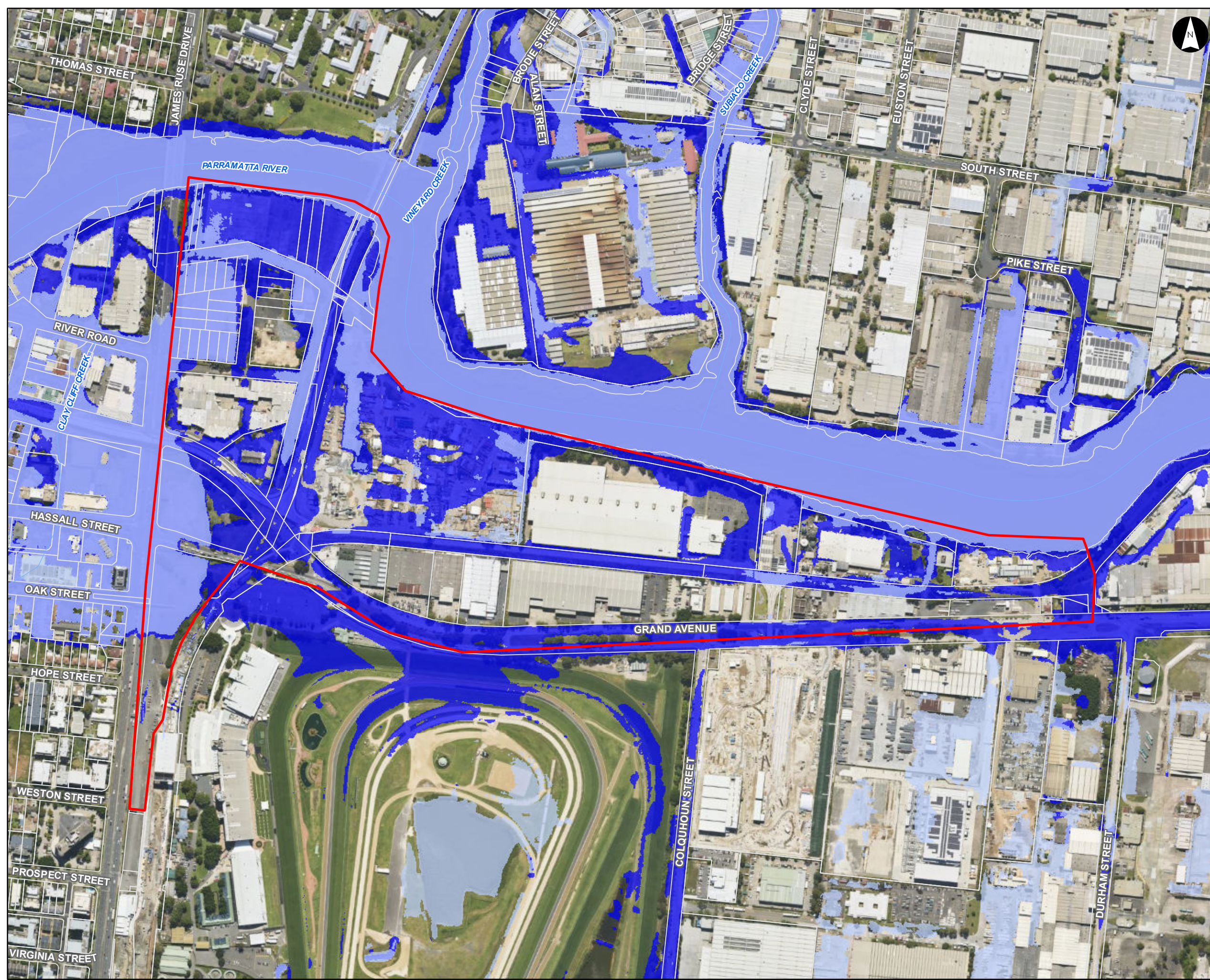
- Legend**
- Area of Significance
 - Flood Depth Points
 - Watercourse
 - Evacuation Routes
 - Cadastre
- 1% Flood Planning Risk Identification**
- High Flood Perimeter
 - Area with Overland Escape Route
 - High Flood Island
 - High Trapped Perimeter
 - Low Flood Island
 - Low Trapped Perimeter
 - Rising Road Access Area
 - Not Flood Affected

Figure O1.2

Notes:
 1. Coordinate System: GDA 1994 MGA Zone 56

References:
 1. Base data supplied by NSW SS and Esri
 2. Aerial imagery supplied by MetroMap
 3. Cadastre (2015) supplied by PCC





Flood Planning Constraints Categorisation Camellia

Parramatta River Flood Study

Project Code: 59916074
 Drawn By: AS
 Map: 59916074-GS-046-FPCC_DDP.mxd
 Rev: 02
 Date: 2023-06-13

- Legend**
- Area of Significance
 - Watercourse
 - Cadastre
- Flood Planning Constraint Categories**
- FPCC1
 - FPCC2

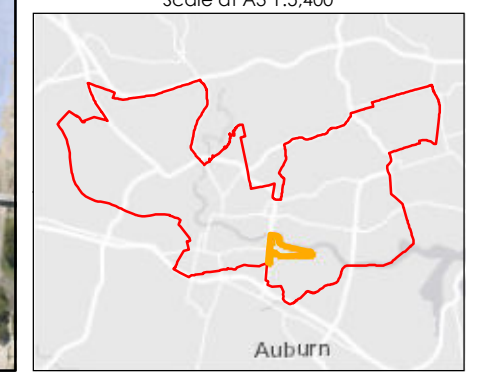
Figure O1.3

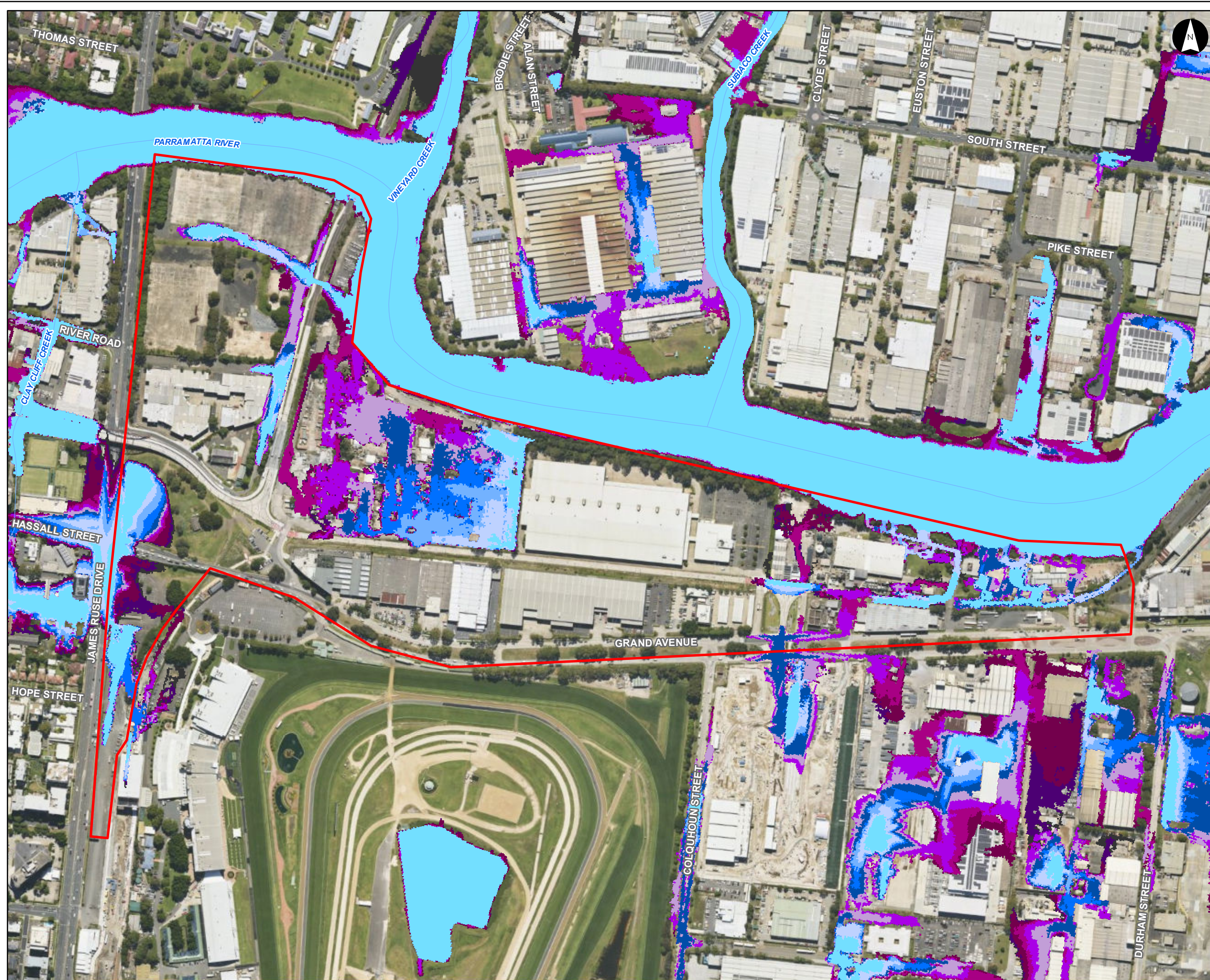
Notes:
 1. Coordinate System: GDA 1994 MGA Zone 56

References:
 1. Base data supplied by NSW SS and Esri
 2. Aerial imagery supplied by MetroMap
 3. Cadastre (2015) supplied by PCC



Scale at A3 1:5,400





**1% AEP 12 hour Duration
Flood Progression
Camellia**

Parramatta River Flood Study

Project Code: 59916074
 Drawn By: AS
 Map: 59916074-GS-039-
 100yFloodProgression_Camellia.mxd
 Rev: 03
 Date: 2023-06-13

Legend

- Area of Significance
- Watercourse

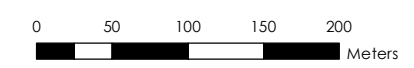
Time (minutes)

- 30 min
- 60 min
- 90 min
- 120 min
- 150 min
- 180 min
- 210 min
- 240 min
- 300 min
- 360 min
- 420 min

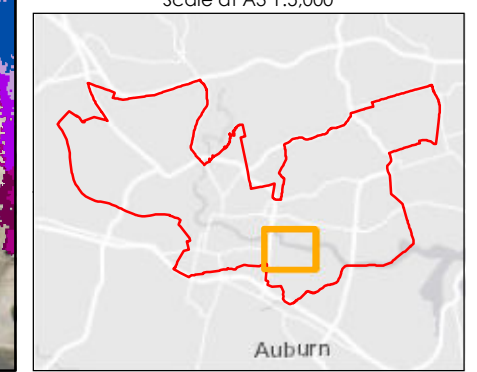
Figure O1.4

Notes:
 1. Coordinate System: GDA 1994 MGA Zone 56

References:
 1. Base data supplied by NSW SS and Esri
 2. Aerial imagery supplied by MetroMap



Scale at A3 1:5,000





PMF Flood Emergency Response Classification CBD River Foreshore

Parramatta River Flood Study

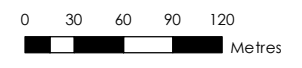
Project Code: 59916074
 Drawn By: AS
 Map: 59916074-GS-047-
 PMF_EmergencyResponse.mxd
 Rev: 04
 Date: 2023-06-13

Legend

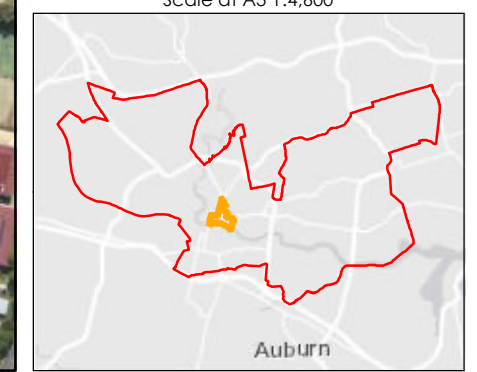
- Area of Significance
 - Flood Depth Points
 - Watercourse
 - Evacuation Routes
 - Cadastre
- PMF Flood Planning Risk Identification**
- Indirectly Affected
 - Area with Overland Escape Route
 - High Flood Island
 - High Trapped Perimeter
 - Low Flood Island
 - Low Trapped Perimeter
 - Rising Road Access Area
 - Not Flood Affected

Figure O2.1

- Notes:
- Coordinate System: GDA 1994 MGA Zone 56
- References:
- Base data supplied by NSW SS and Esri
 - Aerial imagery supplied by MetroMap
 - Cadastre (2015) supplied by PCC



Scale at A3 1:4,600





**1% AEP Flood Emergency Response Classification
CBD River Foreshore**

Parramatta River Flood Study

Project Code: 59916074
 Drawn By: AS
 Map: 59916074-GS-048-100y_EmergencyResponse.mxd
 Rev: 04
 Date: 2023-06-13

- Legend**
- Area of Significance
 - Flood Depth Points
 - Watercourse
 - Evacuation Routes
 - Cadastre
- 1% Flood Planning Risk Identification**
- High Flood Perimeter
 - Area with Overland Escape Route
 - High Flood Island
 - High Trapped Perimeter
 - Low Flood Island
 - Low Trapped Perimeter
 - Rising Road Access Area
 - Not Flood Affected

Figure O2.2

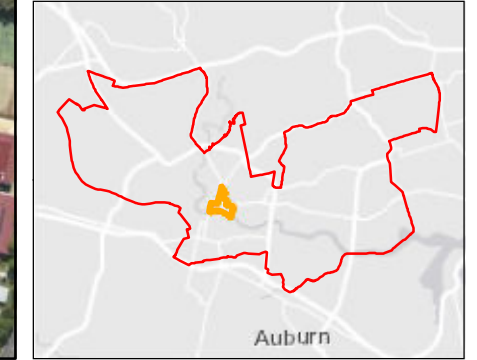
Notes:
 1. Coordinate System: GDA 1994 MGA Zone 56

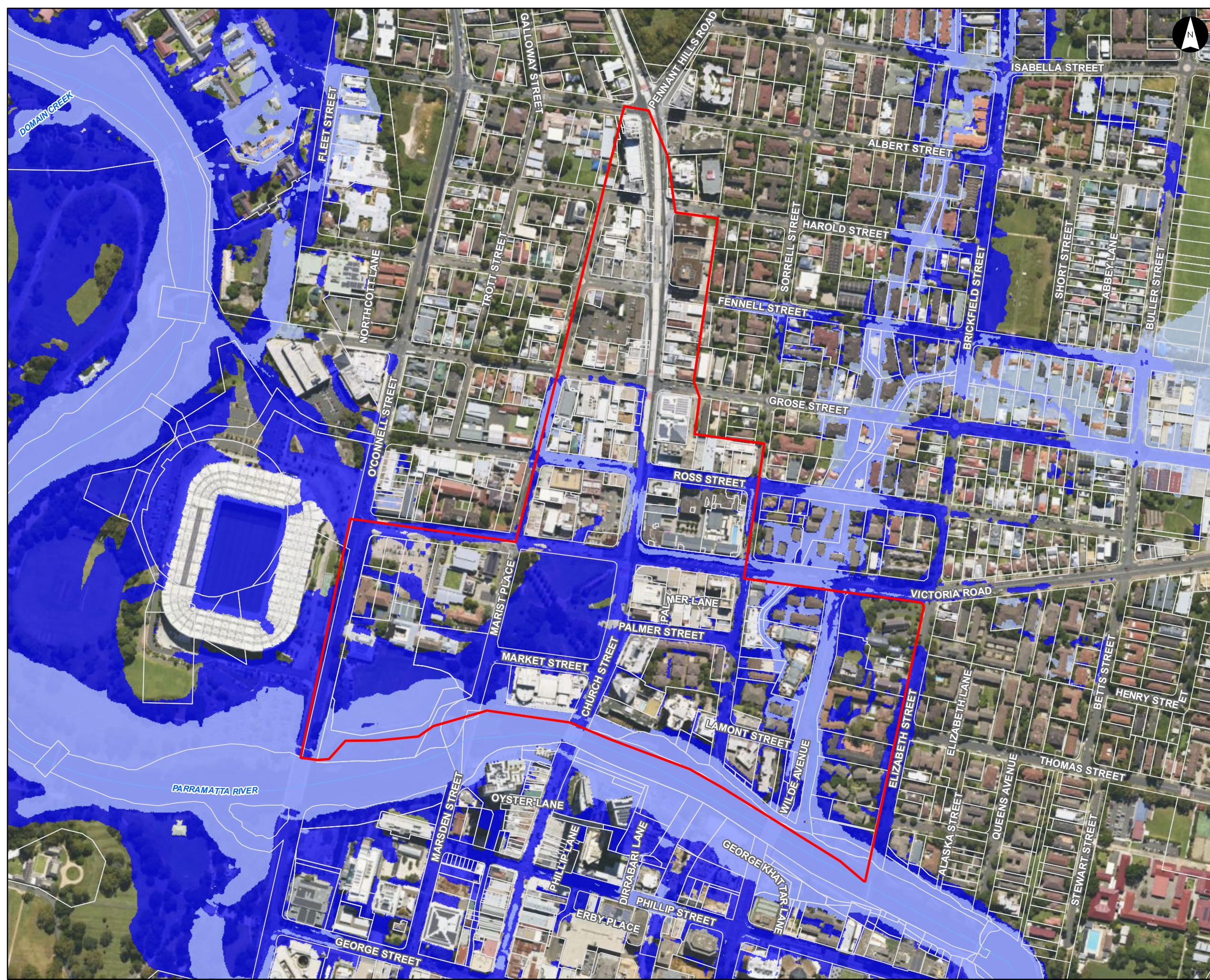
References:
 1. Base data supplied by NSW SS and Esri
 2. Aerial imagery supplied by MetroMap
 3. Cadastre (2015) supplied by PCC

Stantec

0 40 80 120 160
 Meters

Scale at A3 1:4,600





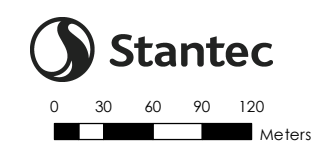
Flood Planning
Constraints Categorisation
CBD River Foreshore

Parramatta River Flood Study
Project Code: 59916074
Drawn By: AS
Map: 59916074-GS-046-FPCC_DDP.mxd
Rev: 02
Date: 2023-06-13

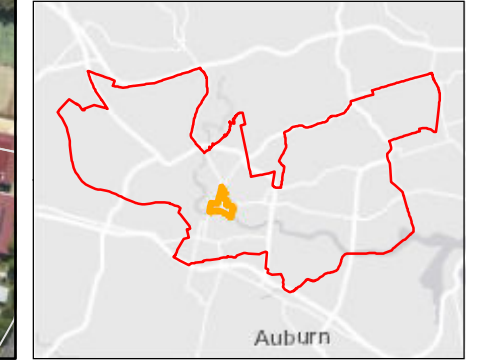
- Legend**
- Area of Significance
 - Watercourse
 - Cadastre
- Flood Planning Constraint Categories**
- FPCC1
 - FPCC2

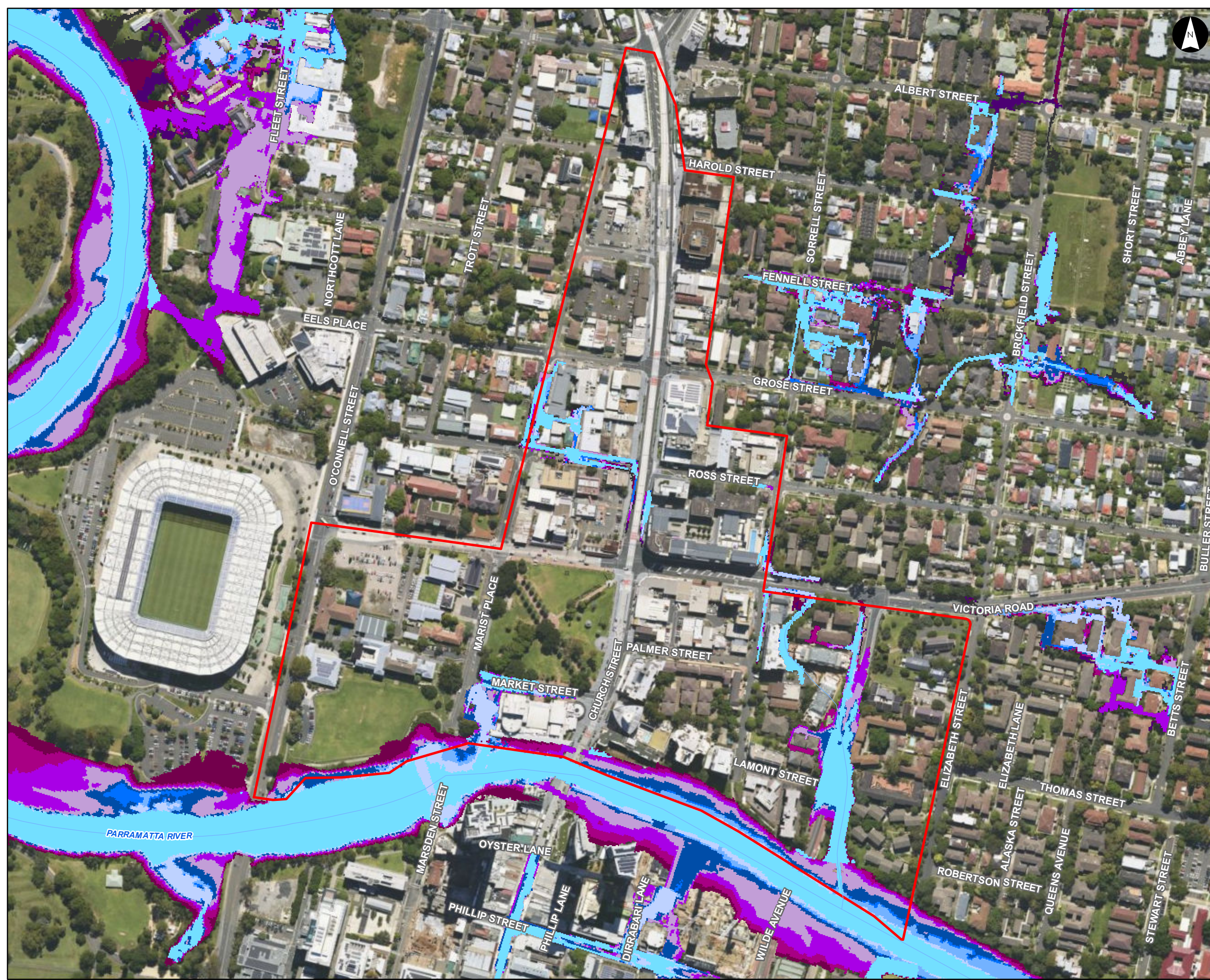
Figure O2.3

- Notes:
1. Coordinate System: GDA 1994 MGA Zone 56
- References:
1. Base data supplied by NSW SS and Esri
 2. Aerial imagery supplied by MetroMap
 3. Cadastre (2015) supplied by PCC



Scale at A3 1:4,600





1% AEP 12 hour Duration
Flood Progression
CBD River Foreshore

Parramatta River Flood Study

Project Code: 59916074
Drawn By: AS
Map: 59916074-GS-045-
100yFloodProgression_CBD_FSh.mxd
Rev: 03
Date: 2023-06-13

Legend

Area of Significance

Watercourse

Time (minutes)

30 min

60 min

90 min

120 min

150 min

180 min

210 min

240 min

300 min

360 min

420 min

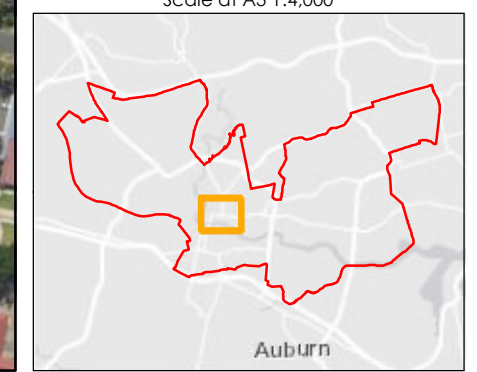
Figure O2.4

Notes:
1. Coordinate System: GDA 1994 MGA Zone 56

References:
1. Base data supplied by NSW SS and Esri
2. Aerial imagery supplied by MetroMap



Scale at A3 1:4,000





PMF Flood Emergency Response Classification Knowledge Precinct

Parramatta River Flood Study

Project Code: 59916074
 Drawn By: AS
 Map: 59916074-GS-047-
 PMF_EmergencyResponse.mxd
 Rev: 04
 Date: 2023-06-13

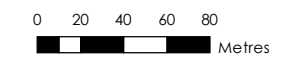
Legend

- Area of Significance
 - Flood Depth Points
 - Watercourse
 - Evacuation Routes
 - Cadastre
- PMF Flood Planning Risk Identification**
- Indirectly Affected
 - Area with Overland Escape Route
 - High Flood Island
 - High Trapped Perimeter
 - Low Flood Island
 - Low Trapped Perimeter
 - Rising Road Access Area
 - Not Flood Affected

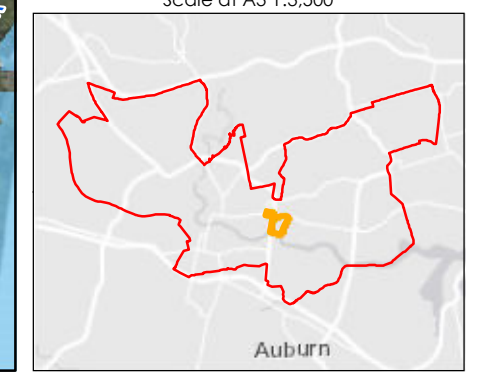
Figure O3.1

Notes:
 1. Coordinate System: GDA 1994 MGA Zone 56

References:
 1. Base data supplied by NSW SS and Esri
 2. Aerial imagery supplied by MetroMap
 3. Cadastre (2015) supplied by PCC



Scale at A3 1:3,500





1% AEP Flood Emergency Response Classification Knowledge Precinct
 Parramatta River Flood Study
 Project Code: 59916074
 Drawn By: AS
 Map: 59916074-GS-048-100y_EmergencyResponse.mxd
 Rev: 04
 Date: 2023-06-13

- Legend**
- Area of Significance
 - Flood Depth Points
 - Watercourse
 - Evacuation Routes
 - Cadastre
- 1% Flood Planning Risk Identification**
- High Flood Perimeter
 - Area with Overland Escape Route
 - High Flood Island
 - High Trapped Perimeter
 - Low Flood Island
 - Low Trapped Perimeter
 - Rising Road Access Area
 - Not Flood Affected

Figure O3.2

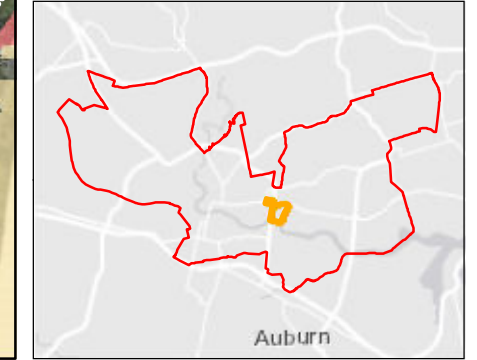
Notes:
 1. Coordinate System: GDA 1994 MGA Zone 56

References:
 1. Base data supplied by NSW SS and Esri
 2. Aerial imagery supplied by MetroMap
 3. Cadastre (2015) supplied by PCC

Stantec

0 30 60 90 120
 Meters

Scale at A3 1:3,500





Flood Planning Constraints Categorisation Knowledge Precinct

Parramatta River Flood Study

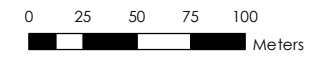
Project Code: 59916074
 Drawn By: AS
 Map: 59916074-GS-046-FPCC_DDP.mxd
 Rev: 02
 Date: 2023-06-13

- Legend**
- Area of Significance
 - Watercourse
 - Cadastre
- Flood Planning Constraint Categories**
- FPCC1
 - FPCC2

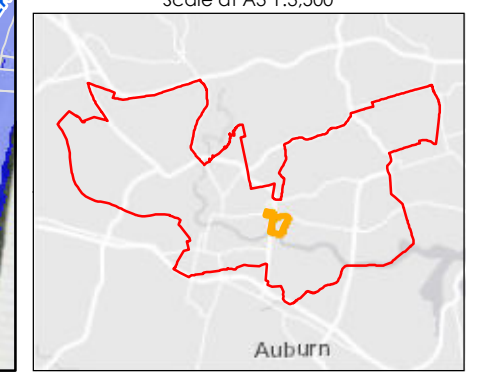
Figure O3.3

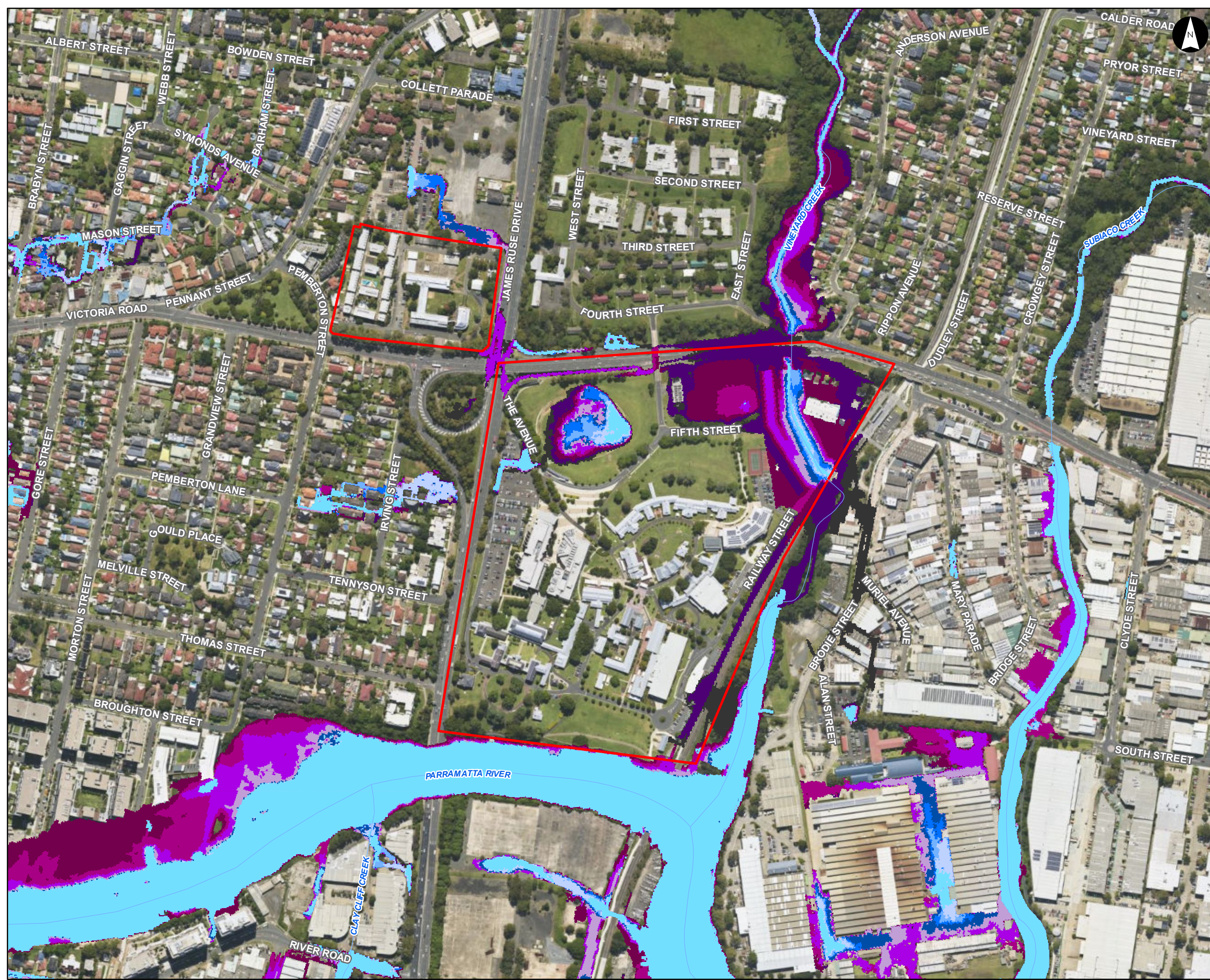
Notes:
 1. Coordinate System: GDA 1994 MGA Zone 56

References:
 1. Base data supplied by NSW SS and Esri
 2. Aerial imagery supplied by MetroMap
 3. Cadastre (2015) supplied by PCC



Scale at A3 1:3,500





**1% AEP 3 hour Duration
Flood Progression
Knowledge Precinct**

Parramatta River Flood Study

Project Code: 59916074
 Drawn By: AS
 Map: 59916074-GS-041-
 100yFloodProgression_KP.mxd
 Rev: 03
 Date: 2023-06-13

Legend

Area of Significance

Watercourse

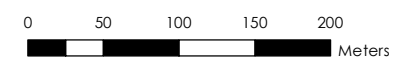
Time (minutes)

- 30 min
- 60 min
- 90 min
- 120 min
- 150 min
- 180 min
- 210 min
- 240 min
- 300 min
- 360 min
- 420 min

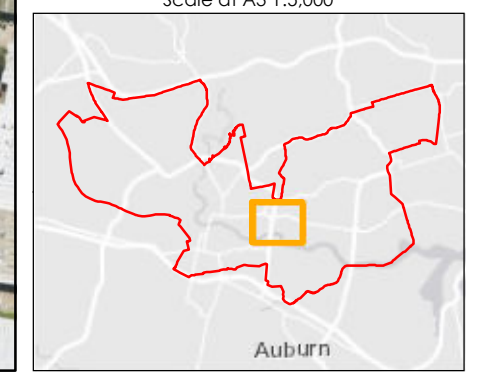
Figure O3.4

Notes:
 1. Coordinate System: GDA 1994 MGA Zone 56

References:
 1. Base data supplied by NSW SS and Esri
 2. Aerial imagery supplied by MetroMap



Scale at A3 1:5,000





PMF Flood Emergency Response Classification
North Parramatta Urban Renewal
 Parramatta River Flood Study

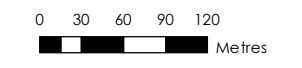
Project Code: 59916074
 Drawn By: AS
 Map: 59916074-GS-047-
 PMF_EmergencyResponse.mxd
 Rev: 04
 Date: 2023-06-13

- Legend**
- Area of Significance
 - Flood Depth Points
 - Watercourse
 - Evacuation Routes
 - Cadastre
- PMF Flood Planning Risk Identification**
- Indirectly Affected
 - Area with Overland Escape Route
 - High Flood Island
 - High Trapped Perimeter
 - Low Flood Island
 - Low Trapped Perimeter
 - Rising Road Access Area
 - Not Flood Affected

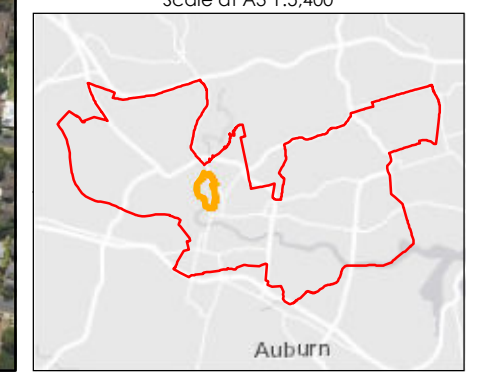
Figure O4.1

Notes:
 1. Coordinate System: GDA 1994 MGA Zone 56

References:
 1. Base data supplied by NSW SS and Esri
 2. Aerial imagery supplied by MetroMap
 3. Cadastre (2015) supplied by PCC



Scale at A3 1:5,400





1% AEP Flood Emergency Response Classification
North Parramatta Urban Renewal
 Parramatta River Flood Study

Project Code: 59916074
 Drawn By: AS
 Map: 59916074-GS-048-100y_EmergencyResponse.mxd
 Rev: 04
 Date: 2023-06-13

- Legend**
- Area of Significance
 - Flood Depth Points
 - Watercourse
 - Evacuation Routes
 - Cadastre
- 1% Flood Planning Risk Identification**
- High Flood Perimeter
 - Area with Overland Escape Route
 - High Flood Island
 - High Trapped Perimeter
 - Low Flood Island
 - Low Trapped Perimeter
 - Rising Road Access Area
 - Not Flood Affected

Figure O4.2

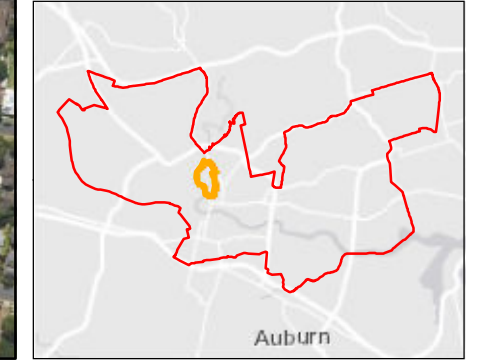
Notes:
 1. Coordinate System: GDA 1994 MGA Zone 56

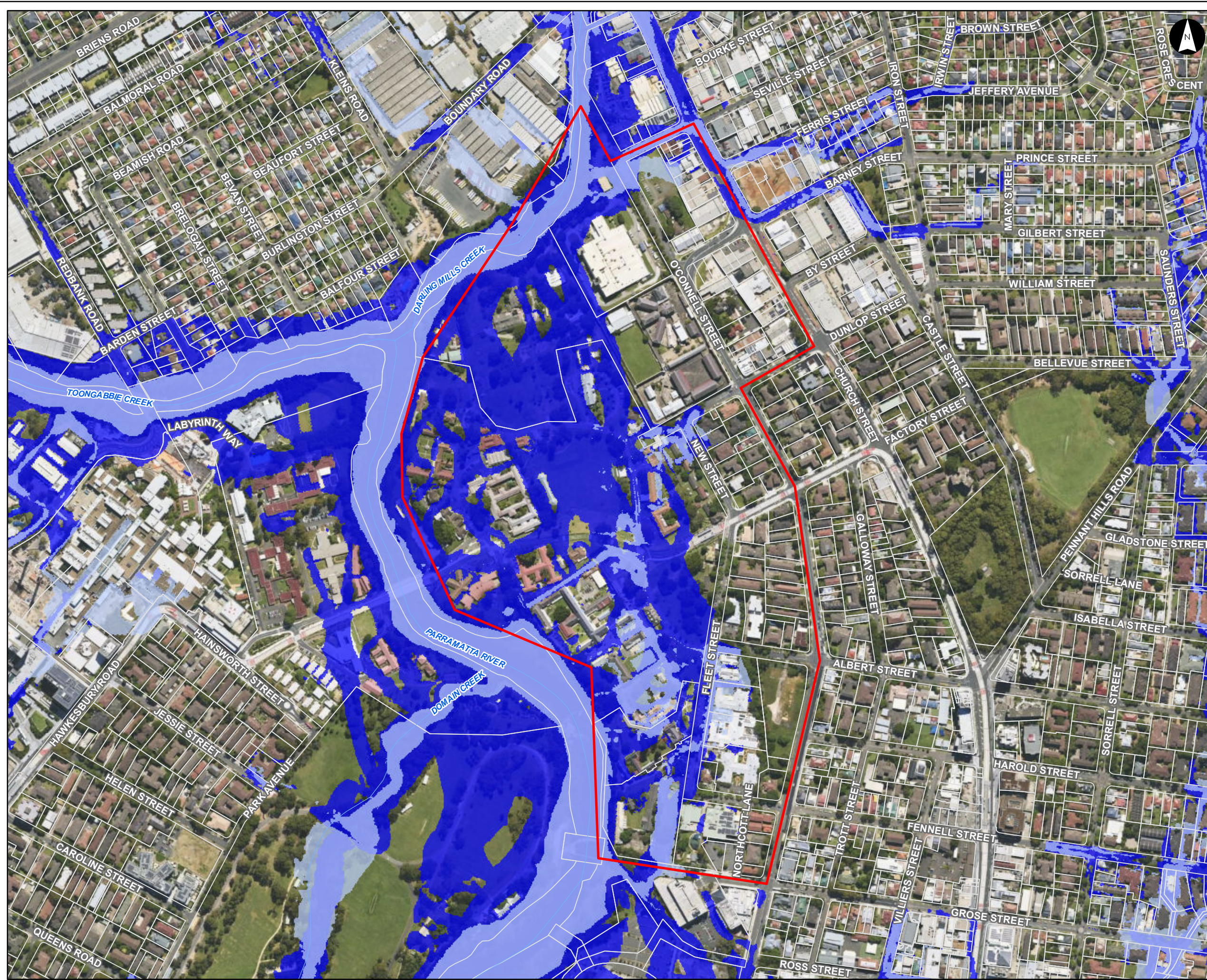
References:
 1. Base data supplied by NSW SS and Esri
 2. Aerial imagery supplied by MetroMap
 3. Cadastre (2015) supplied by PCC

Stantec

0 50 100 150 200 Meters

Scale at A3 1:5,400





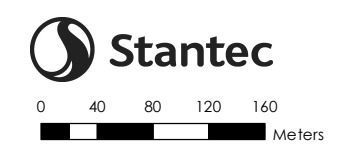
Flood Planning Constraints Categorisation North Parramatta Urban Renewal
 Parramatta River Flood Study

Project Code: 59916074
 Drawn By: AS
 Map: 59916074-GS-046-FPCC_DDP.mxd
 Rev: 02
 Date: 2023-06-13

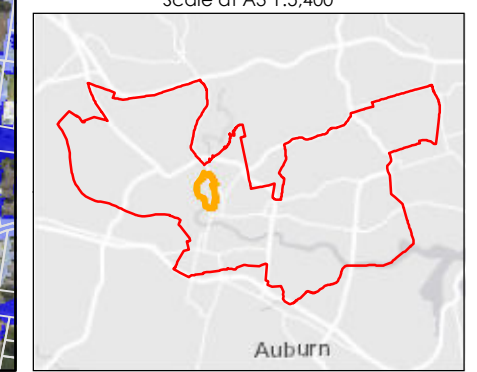
- Legend**
- Area of Significance
 - Watercourse
 - Cadastre
- Flood Planning Constraint Categories**
- FPCC1
 - FPCC2

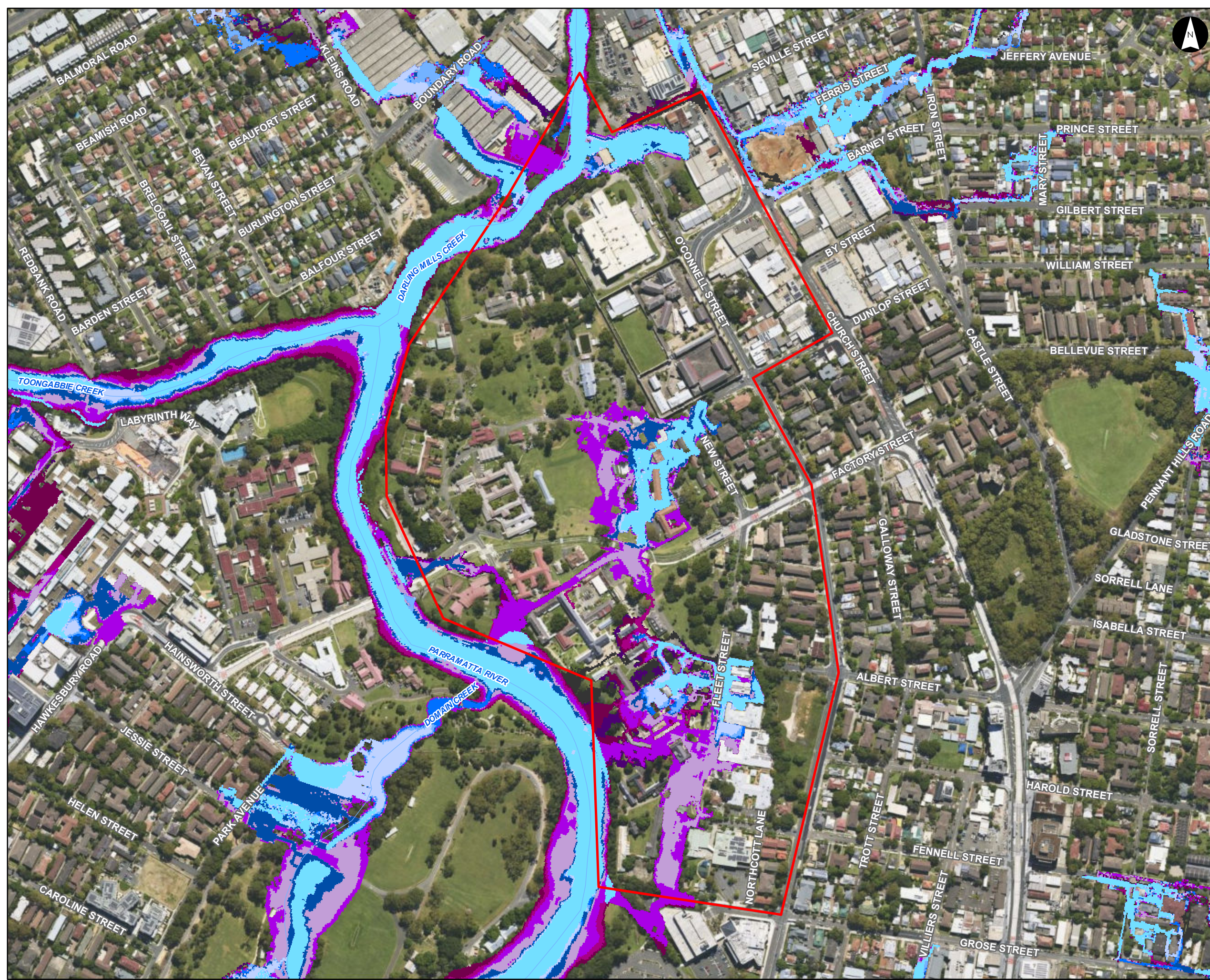
Figure O4.3

- Notes:
1. Coordinate System: GDA 1994 MGA Zone 56
- References:
1. Base data supplied by NSW SS and Esri
 2. Aerial imagery supplied by MetroMap
 3. Cadastre (2015) supplied by PCC



Scale at A3 1:5,400





**1% AEP 3 hour Duration
Flood Progression
North Parramatta Urban
Renewal**

Parramatta River Flood Study

Project Code: 59916074
 Drawn By: AS
 Map: 59916074-GS-042-
 100yFloodProgression_NPUR.mxd
 Rev: 03
 Date: 2023-06-13

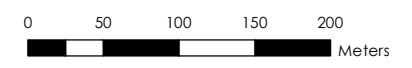
Legend

- Area of Significance
 - Watercourse
- Time (minutes)**
- 30 min
 - 210 min
 - 60 min
 - 240 min
 - 90 min
 - 300 min
 - 120 min
 - 360 min
 - 150 min
 - 420 min
 - 180 min

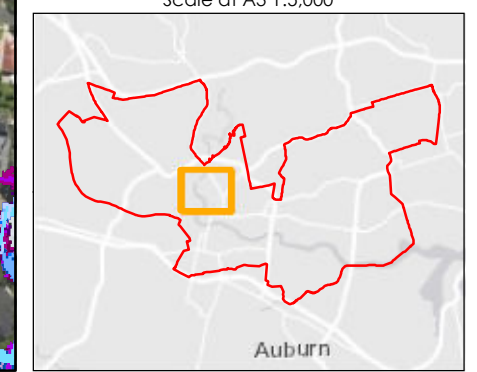
Figure O4.4

Notes:
 1. Coordinate System: GDA 1994 MGA Zone 56

References:
 1. Base data supplied by NSW SS and Esri
 2. Aerial imagery supplied by MetroMap



Scale at A3 1:5,000





PMF Flood Emergency Response Classification Parramatta CBD

Parramatta River Flood Study

Project Code: 59916074
 Drawn By: AS
 Map: 59916074-GS-047-
 PMF_EmergencyResponse.mxd
 Rev: 04
 Date: 2023-06-13

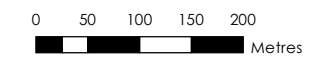
Legend

- Area of Significance
 - Flood Depth Points
 - Watercourse
 - Evacuation Routes
 - Cadastre
- ### PMF Flood Planning Risk Identification
- Indirectly Affected
 - Area with Overland Escape Route
 - High Flood Island
 - High Trapped Perimeter
 - Low Flood Island
 - Low Trapped Perimeter
 - Rising Road Access Area
 - Not Flood Affected

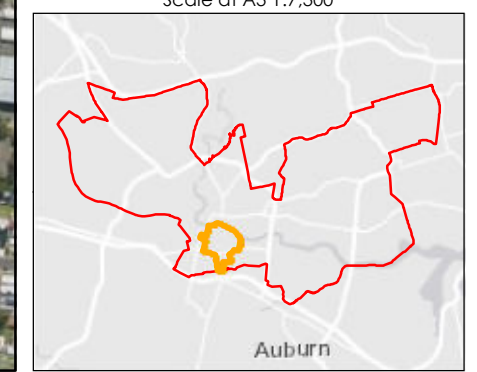
Figure O5.1

Notes:
 1. Coordinate System: GDA 1994 MGA Zone 56

References:
 1. Base data supplied by NSW SS and Esri
 2. Aerial imagery supplied by MetroMap
 3. Cadastre (2015) supplied by PCC



Scale at A3 1:7,300





**1% AEP Flood Emergency Response Classification
Parramatta CBD**

Parramatta River Flood Study

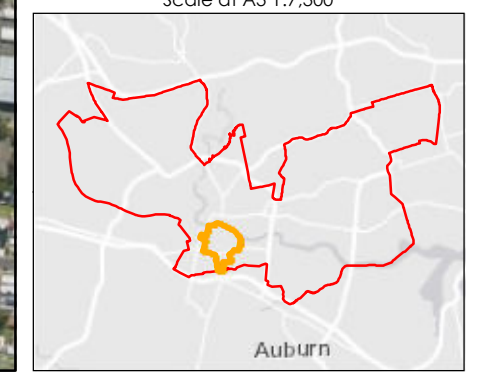
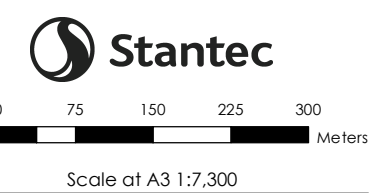
Project Code: 59916074
 Drawn By: AS
 Map: 59916074-GS-048-100y_EmergencyResponse.mxd
 Rev: 04
 Date: 2023-06-13

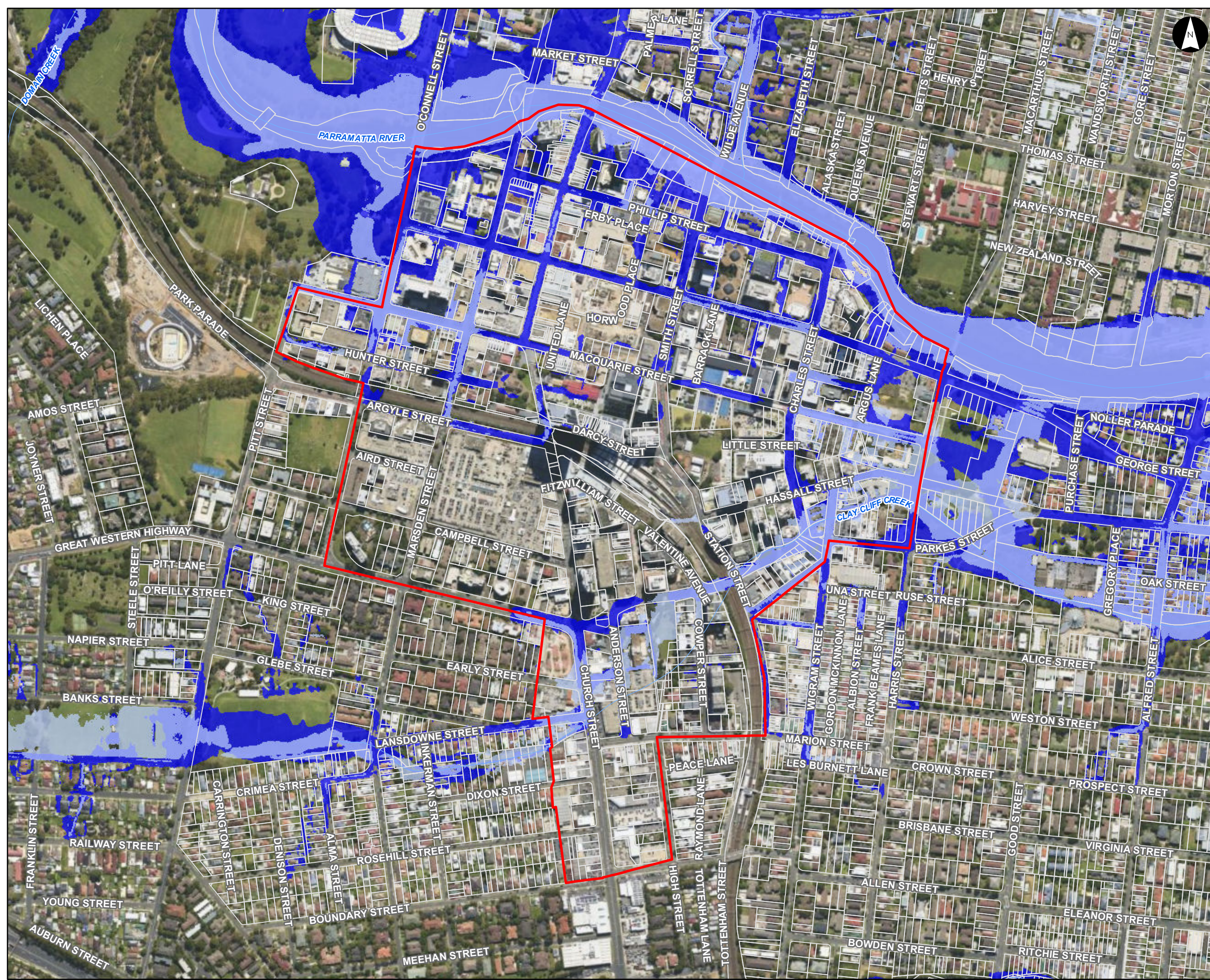
- Legend**
- Area of Significance
 - Flood Depth Points
 - Watercourse
 - Evacuation Routes
 - Cadastre
- 1% Flood Planning Risk Identification**
- High Flood Perimeter
 - Area with Overland Escape Route
 - High Flood Island
 - High Trapped Perimeter
 - Low Flood Island
 - Low Trapped Perimeter
 - Rising Road Access Area
 - Not Flood Affected

Figure O5.2

Notes:
 1. Coordinate System: GDA 1994 MGA Zone 56

References:
 1. Base data supplied by NSW SS and Esri
 2. Aerial imagery supplied by MetroMap
 3. Cadastre (2015) supplied by PCC





Flood Planning Constraints Categorisation Parramatta CBD

Parramatta River Flood Study
 Project Code: 59916074
 Drawn By: AS
 Map: 59916074-GS-046-FPCC_DDP.mxd
 Rev: 02
 Date: 2023-06-13

Legend

- Area of Significance
- Watercourse
- Cadastre

Flood Planning Constraint Categories

- FPCC1
- FPCC2

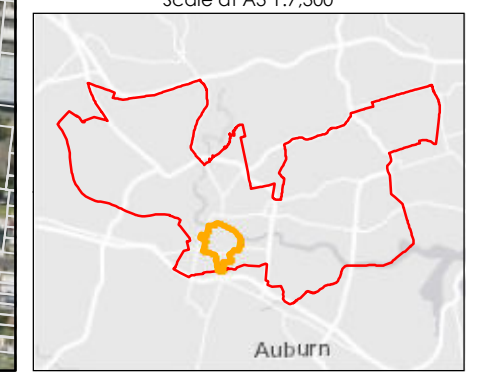
Figure O5.3

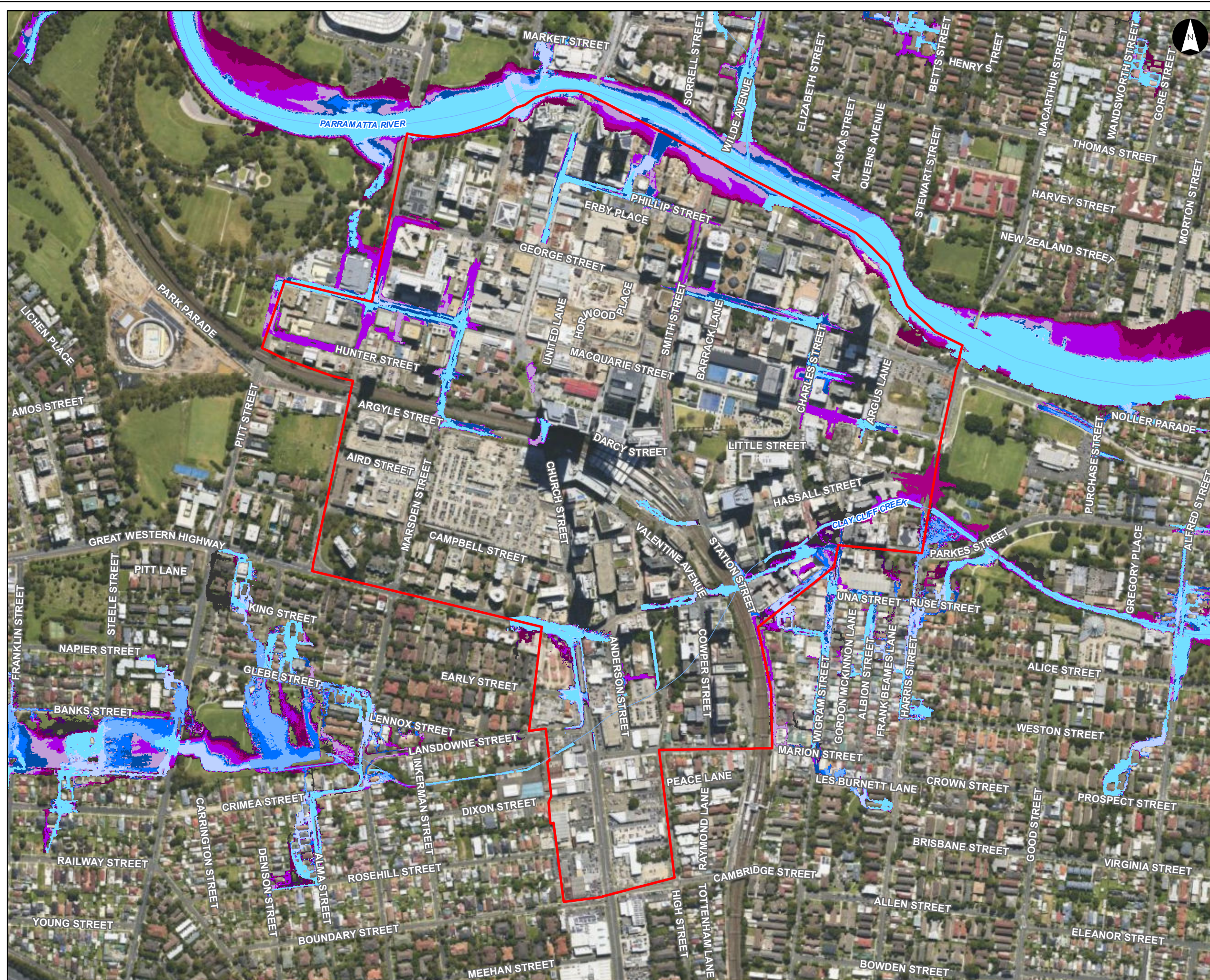
- Notes:
- Coordinate System: GDA 1994 MGA Zone 56
- References:
- Base data supplied by NSW SS and Esri
 - Aerial imagery supplied by MetroMap
 - Cadastre (2015) supplied by PCC

Stantec

0 50 100 150 200 Meters

Scale at A3 1:7,300





**1% AEP 2 hour Duration
Flood Progression
Parramatta CBD**

Parramatta River Flood Study
 Project Code: 59916074
 Drawn By: AS
 Map: 59916074-GS-040-
 100yFloodProgression_CBD.mxd
 Rev: 03
 Date: 2023-06-13

Legend

- Area of Significance
- Watercourse

Time (minutes)

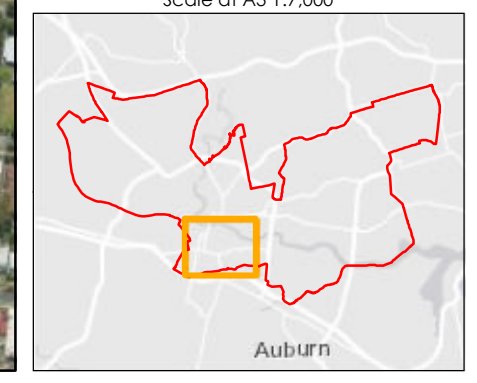
 30 min	 210 min
 60 min	 240 min
 90 min	 300 min
 120 min	 360 min
 150 min	 420 min
 180 min	

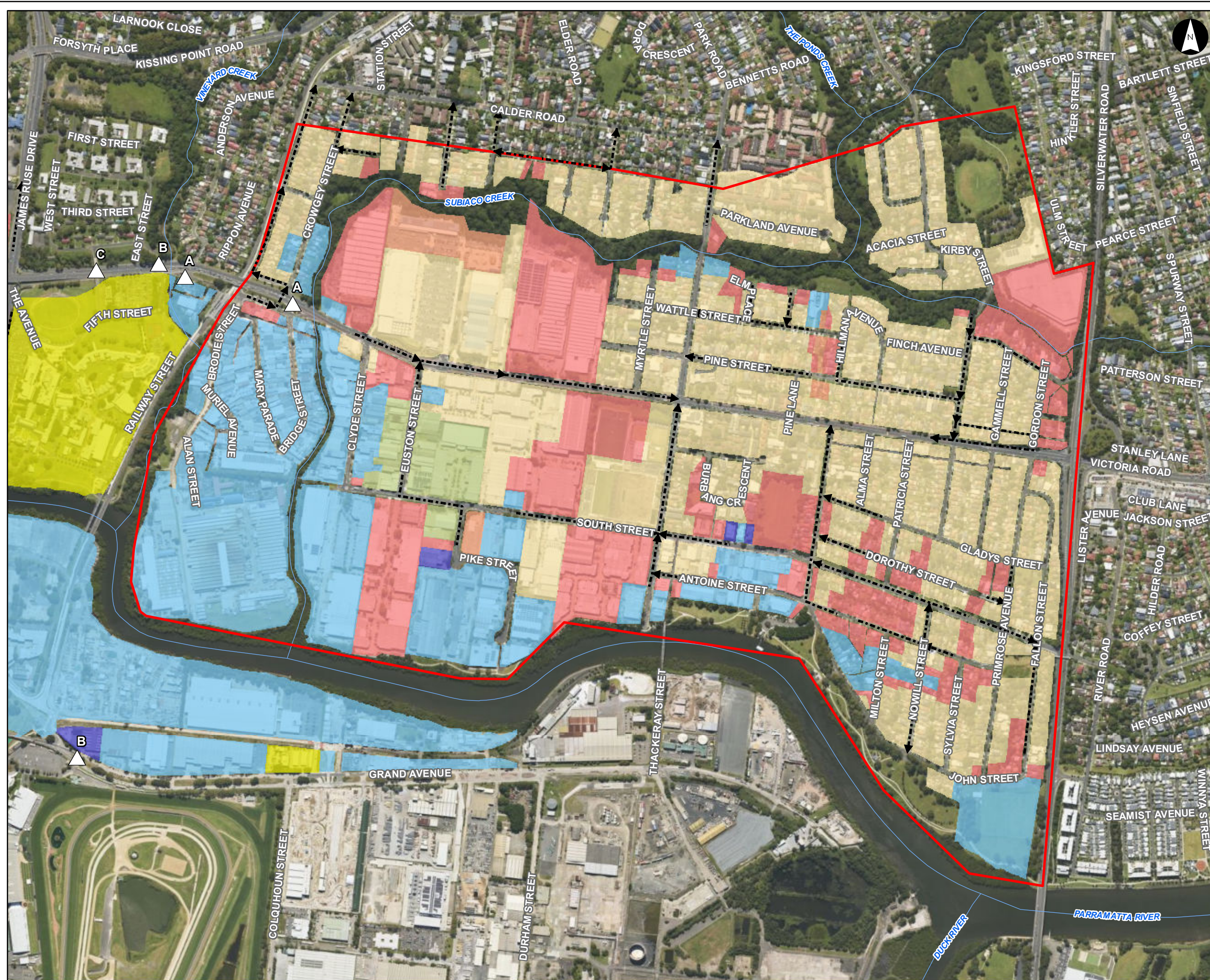
Figure O5.4

- Notes:
- Coordinate System: GDA 1994 MGA Zone 56
- References:
- Base data supplied by NSW SS and Esri
 - Aerial imagery supplied by MetroMap



Scale at A3 1:7,000





PMF Flood Emergency Response Classification Rydalmere

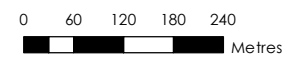
Parramatta River Flood Study
 Project Code: 59916074
 Drawn By: AS
 Map: 59916074-GS-047-PMF_EmergencyResponse.mxd
 Rev: 04
 Date: 2023-06-13

- Legend**
- Area of Significance
 - Flood Depth Points
 - Watercourse
 - Evacuation Routes
 - Cadastre
- PMF Flood Planning Risk Identification**
- Indirectly Affected
 - Area with Overland Escape Route
 - High Flood Island
 - High Trapped Perimeter
 - Low Flood Island
 - Low Trapped Perimeter
 - Rising Road Access Area
 - Not Flood Affected

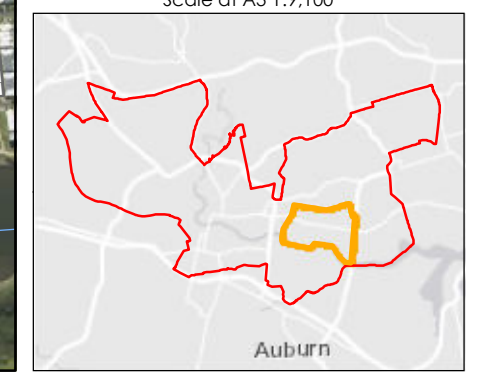
Figure O6.1

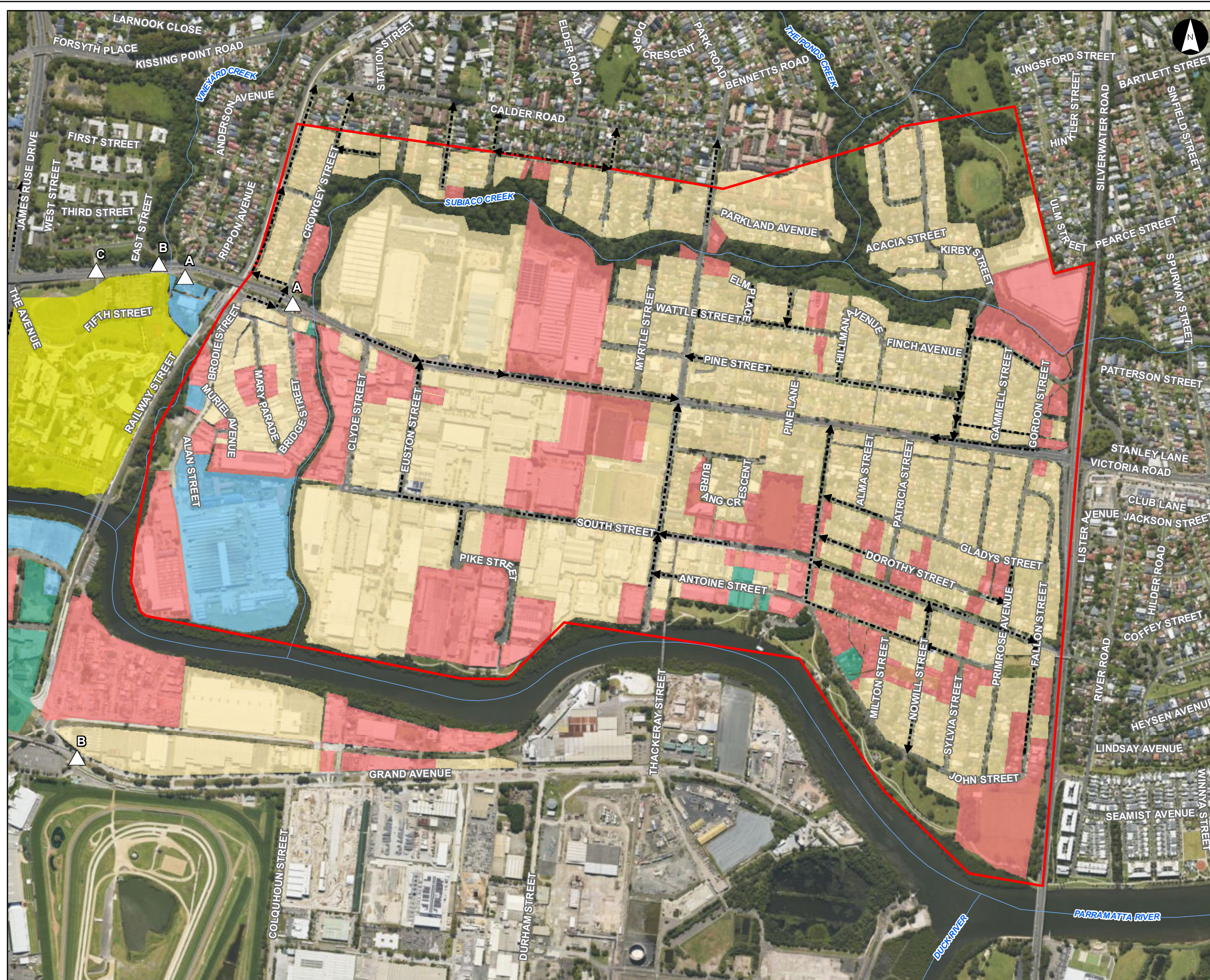
Notes:
 1. Coordinate System: GDA 1994 MGA Zone 56

References:
 1. Base data supplied by NSW SS and Esri
 2. Aerial imagery supplied by MetroMap
 3. Cadastre (2015) supplied by PCC



Scale at A3 1:9,100





1% AEP Flood Emergency Response Classification Rydalmere

Parramatta River Flood Study

Project Code: 59916074
 Drawn By: AS
 Map: 59916074-GS-048-100y_EmergencyResponse.mxd
 Rev: 04
 Date: 2023-06-13

- Legend**
- Area of Significance
 - Flood Depth Points
 - Watercourse
 - Evacuation Routes
 - Cadastre
- 1% Flood Planning Risk Identification**
- High Flood Perimeter
 - Area with Overland Escape Route
 - High Flood Island
 - High Trapped Perimeter
 - Low Flood Island
 - Low Trapped Perimeter
 - Rising Road Access Area
 - Not Flood Affected

Figure O6.2

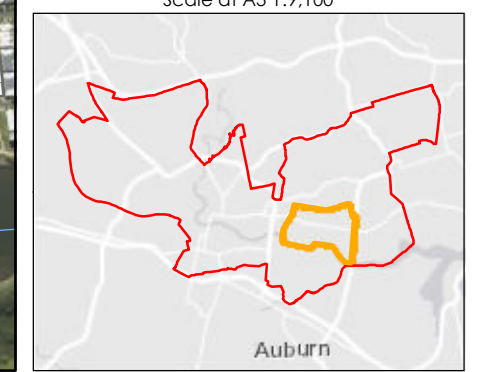
Notes:
 1. Coordinate System: GDA 1994 MGA Zone 56

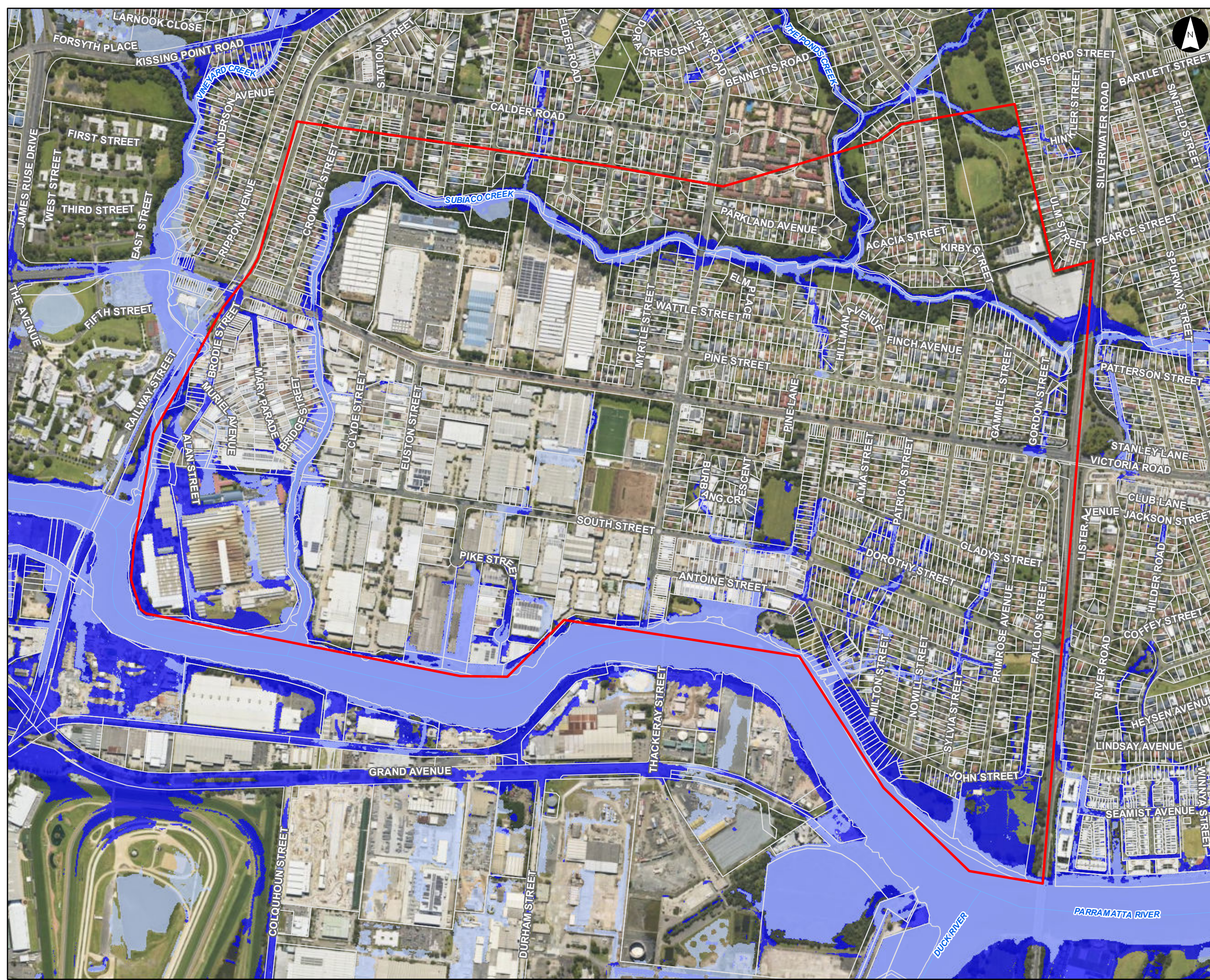
References:
 1. Base data supplied by NSW SS and Esri
 2. Aerial imagery supplied by MetroMap
 3. Cadastre (2015) supplied by PCC

Stantec

0 90 180 270 360
 Meters

Scale at A3 1:9,100





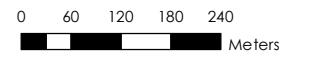
Flood Planning Constraints Categorisation Rydalmere

Parramatta River Flood Study
 Project Code: 59916074
 Drawn By: AS
 Map: 59916074-GS-046-FPCC_DDP.mxd
 Rev: 02
 Date: 2023-06-13

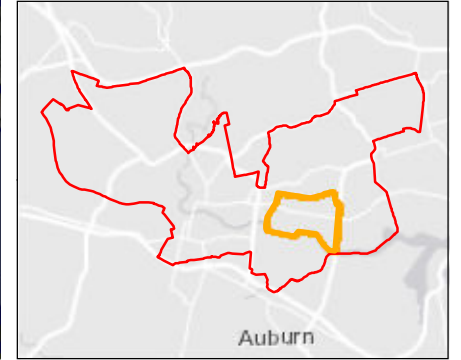
- Legend**
- Area of Significance
 - Watercourse
 - Cadastre
- Flood Planning Constraint Categories**
- FPCC1
 - FPCC2

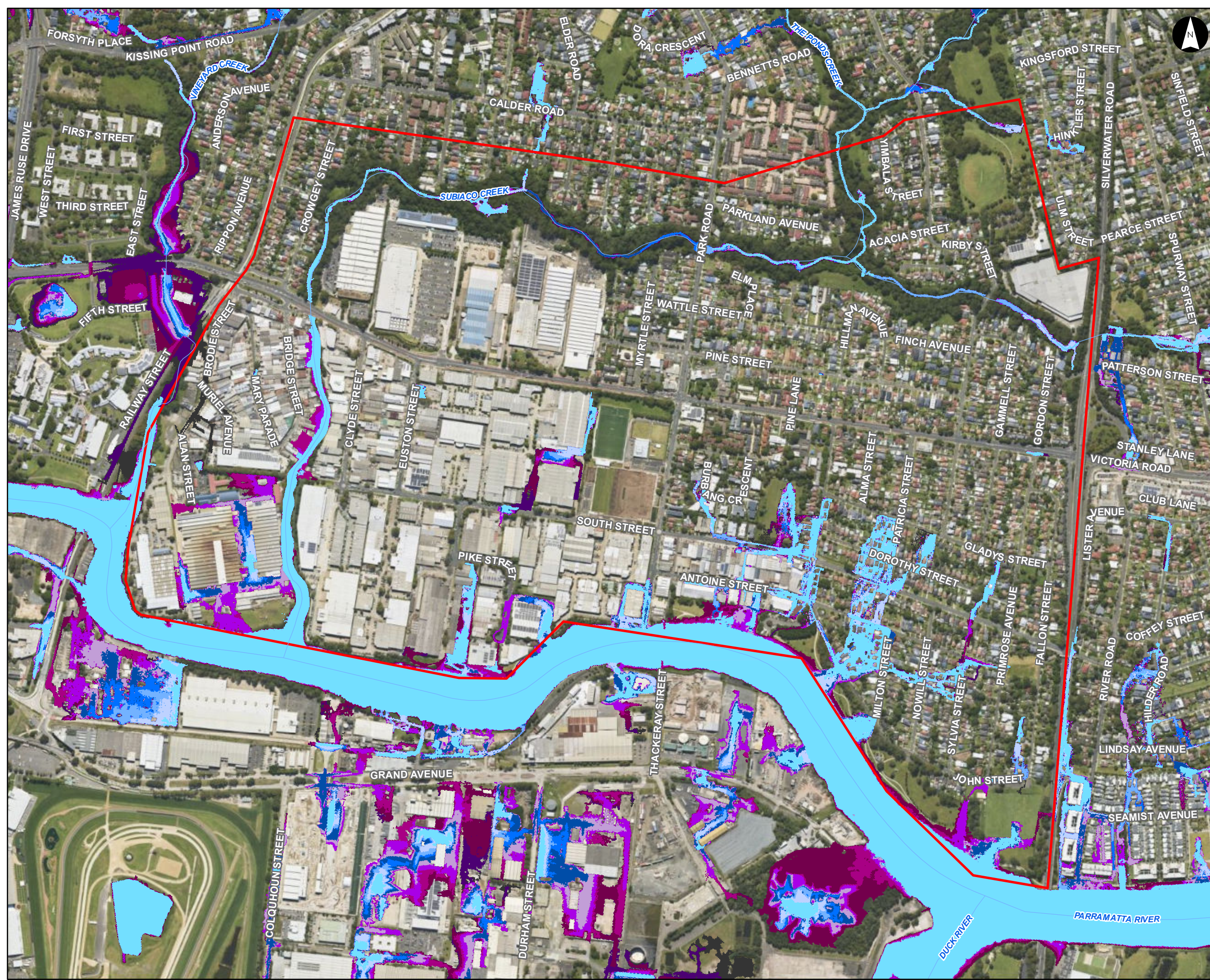
Figure O6.3

- Notes:
1. Coordinate System: GDA 1994 MGA Zone 56
- References:
1. Base data supplied by NSW SS and Esri
 2. Aerial imagery supplied by MetroMap
 3. Cadastre (2015) supplied by PCC



Scale at A3 1:9,100





**1% AEP 3 hour Duration
Flood Progression
Rydalmere**

Parramatta River Flood Study
 Project Code: 59916074
 Drawn By: AS
 Map: 59916074-GS-043-
 100yFloodProgression_Rydalmere.mxd
 Rev: 03
 Date: 2023-06-13

Legend

- Area of Significance
- Watercourse

Time (minutes)

 30 min	 210 min
 60 min	 240 min
 90 min	 300 min
 120 min	 360 min
 150 min	 420 min
 180 min	

Figure O6.4

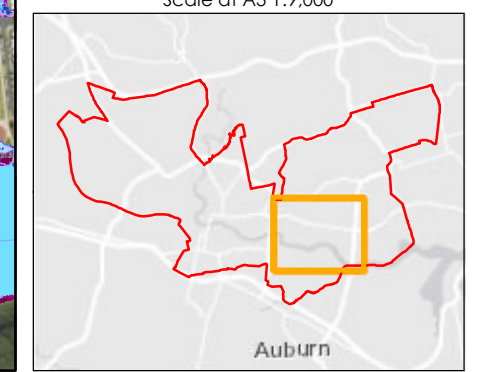
Notes:
 1. Coordinate System: GDA 1994 MGA Zone 56

References:
 1. Base data supplied by NSW SS and Esri
 2. Aerial imagery supplied by MetroMap

Stantec

0 50 100 150 200 250
 Meters

Scale at A3 1:9,000





PMF Flood Emergency Response Classification Westmead Biomedical

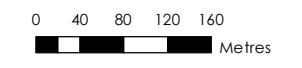
Parramatta River Flood Study
 Project Code: 59916074
 Drawn By: AS
 Map: 59916074-GS-047-
 PMF_EmergencyResponse.mxd
 Rev: 04
 Date: 2023-06-13

- Legend**
- Area of Significance
 - Flood Depth Points
 - Watercourse
 - Evacuation Routes
 - Cadastre
- PMF Flood Planning Risk Identification**
- Indirectly Affected
 - Area with Overland Escape Route
 - High Flood Island
 - High Trapped Perimeter
 - Low Flood Island
 - Low Trapped Perimeter
 - Rising Road Access Area
 - Not Flood Affected

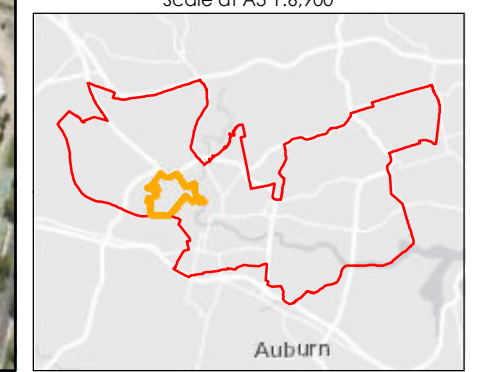
Figure O7.1

Notes:
 1. Coordinate System: GDA 1994 MGA Zone 56

References:
 1. Base data supplied by NSW SS and Esri
 2. Aerial imagery supplied by MetroMap
 3. Cadastre (2015) supplied by PCC



Scale at A3 1:6,900





1% AEP Flood Emergency Response Classification Westmead Biomedical

Parramatta River Flood Study
 Project Code: 59916074
 Drawn By: AS
 Map: 59916074-GS-048-100y_EmergencyResponse.mxd
 Rev: 04
 Date: 2023-06-13

- Legend**
- Area of Significance
 - Flood Depth Points
 - Watercourse
 - Evacuation Routes
 - Cadastre
- 1% Flood Planning Risk Identification**
- High Flood Perimeter
 - Area with Overland Escape Route
 - High Flood Island
 - High Trapped Perimeter
 - Low Flood Island
 - Low Trapped Perimeter
 - Rising Road Access Area
 - Not Flood Affected

Figure O7.2

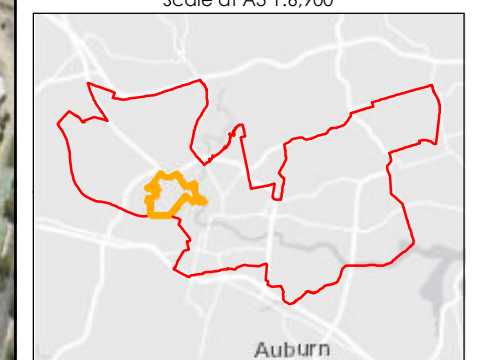
Notes:
 1. Coordinate System: GDA 1994 MGA Zone 56

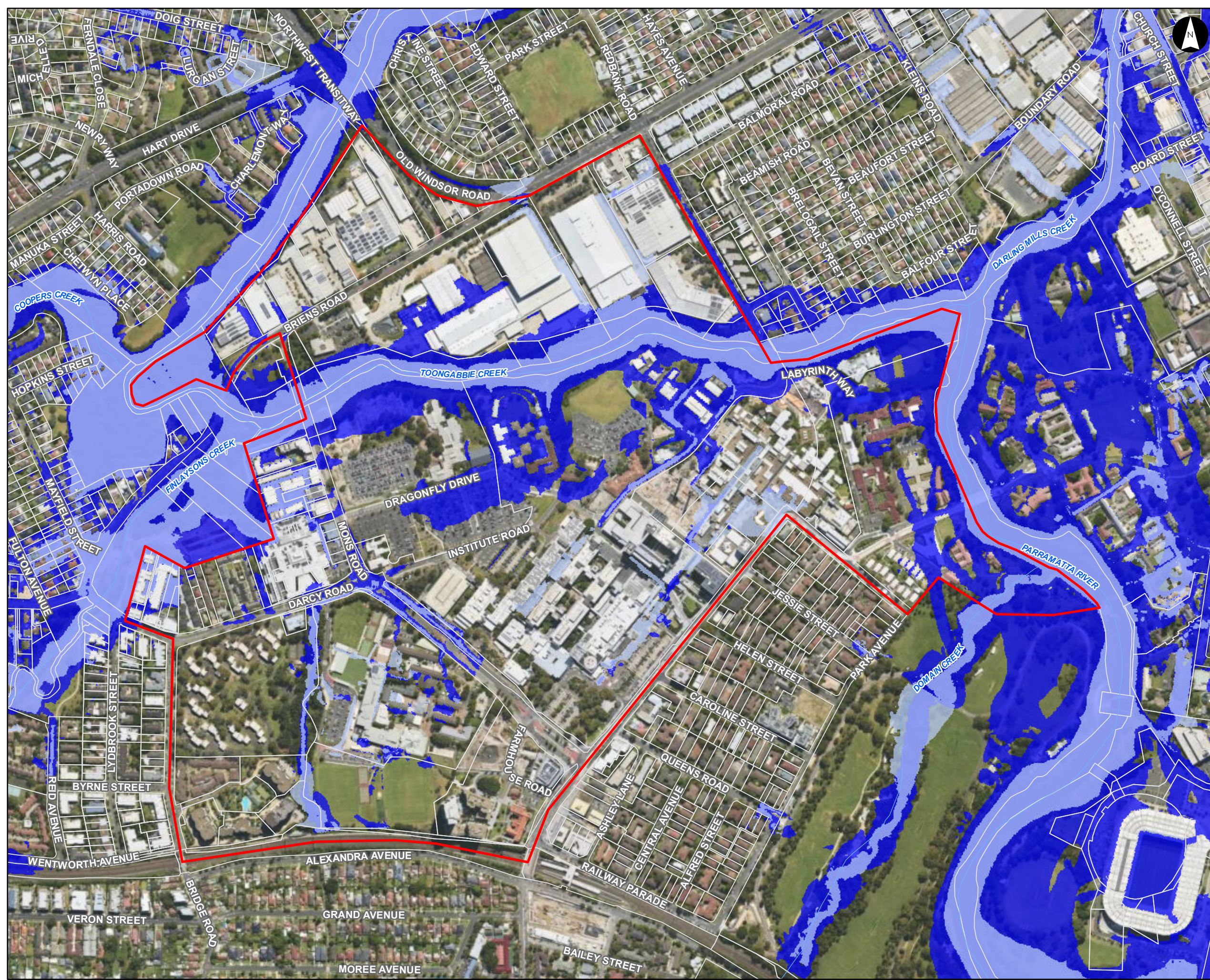
References:
 1. Base data supplied by NSW SS and Esri
 2. Aerial imagery supplied by MetroMap
 3. Cadastre (2015) supplied by PCC

Stantec

0 70 140 210 280
 Meters

Scale at A3 1:6,900





Flood Planning Constraints Categorisation Westmead Biomedical

Parramatta River Flood Study
 Project Code: 59916074
 Drawn By: AS
 Map: 59916074-GS-046-FPCC_DDP.mxd
 Rev: 02
 Date: 2023-06-13

Legend

- Area of Significance
- Watercourse
- Cadastre

Flood Planning Constraint Categories

- FPCC1
- FPCC2

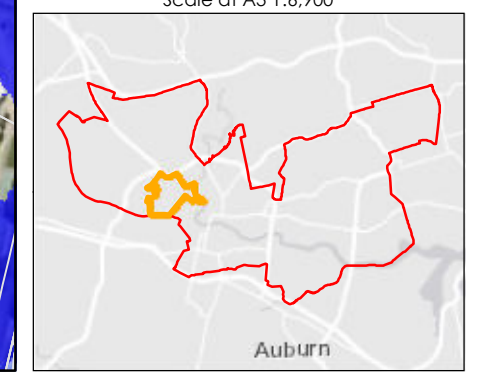
Figure O7.3

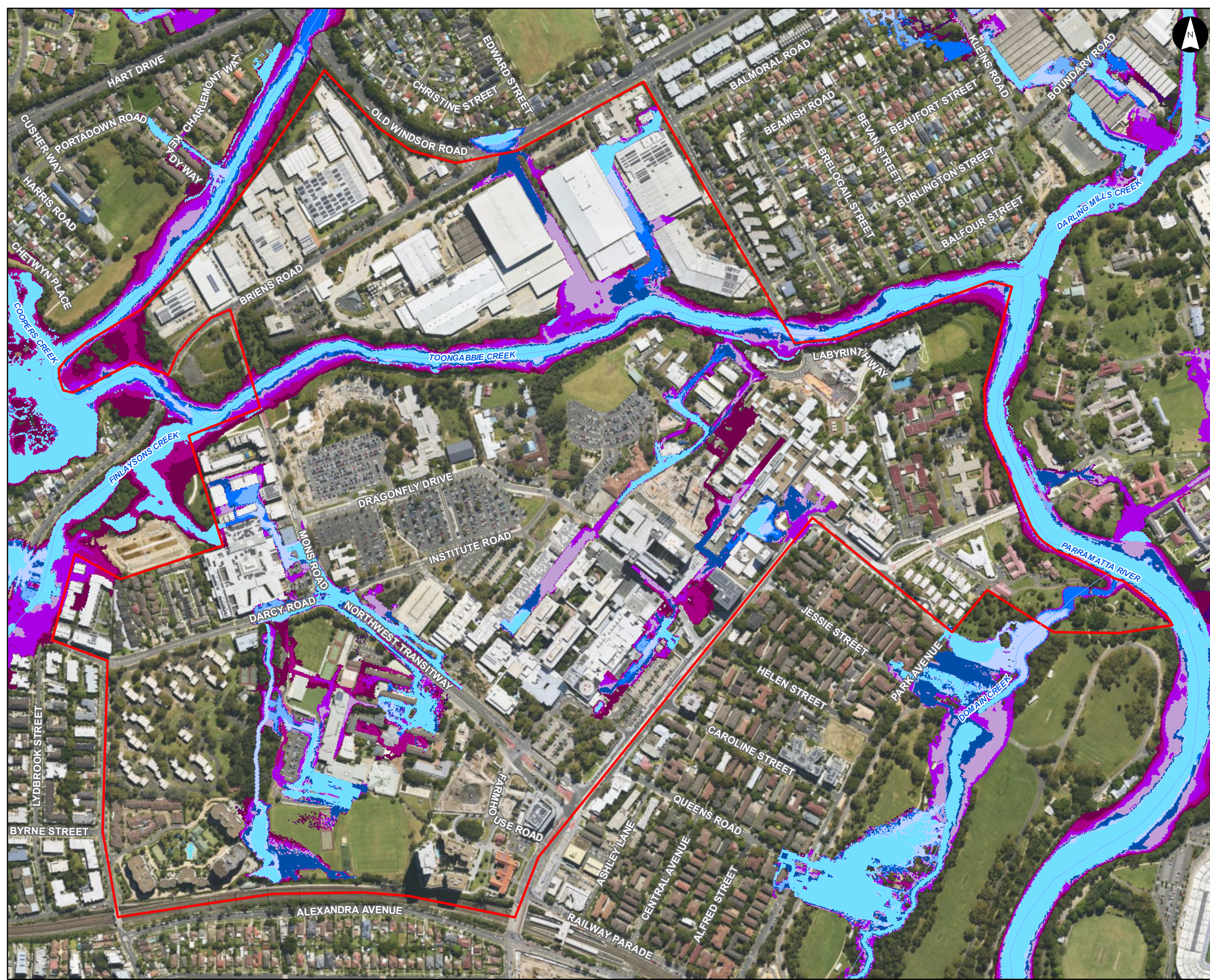
- Notes:
- Coordinate System: GDA 1994 MGA Zone 56
- References:
- Base data supplied by NSW SS and Esri
 - Aerial imagery supplied by MetroMap
 - Cadastre (2015) supplied by PCC

Stantec

0 50 100 150 200 Meters

Scale at A3 1:6,900





1% AEP 2 hour Duration
Flood Progression
Westmead Biomedical

Parramatta River Flood Study
Project Code: 59916074
Drawn By: AS
Map: 59916074-GS-044-100yFloodProgression_WB.mxd
Rev: 03
Date: 2023-06-13

Legend

- Area of Significance
- Watercourse

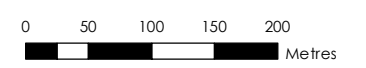
Time (minutes)

 30 min	 210 min
 60 min	 240 min
 90 min	 300 min
 120 min	 360 min
 150 min	 420 min
 180 min	

Figure O7.4

Notes:
1. Coordinate System: GDA 1994 MGA Zone 56

References:
1. Base data supplied by NSW SS and Esri
2. Aerial imagery supplied by MetroMap



Scale at A3 1:6,000

