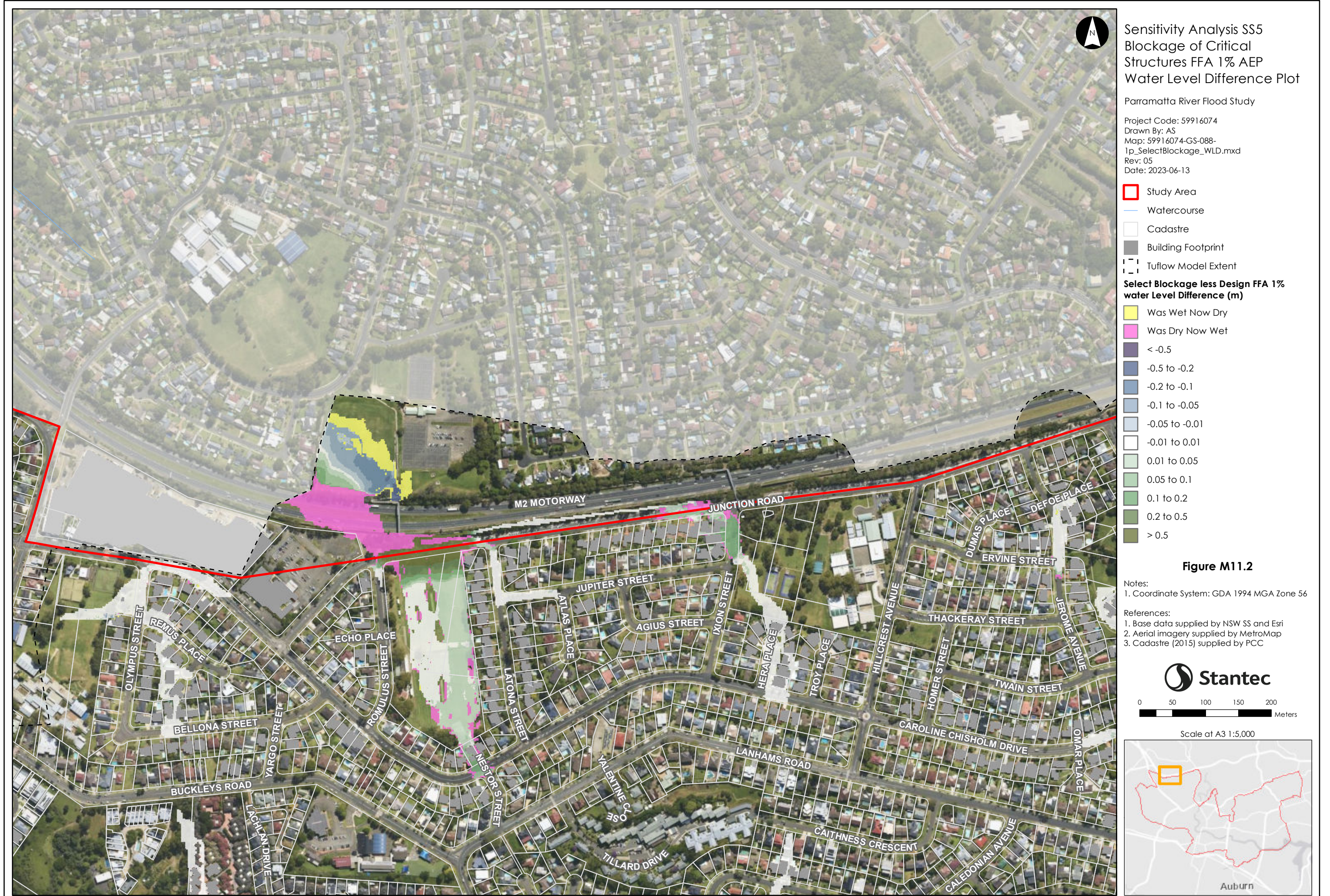


Please note contours reflect the actual extent of flooding within the Flood Planning Area including riverine floods, overland flow impacted by riverine backwater, and significant overland paths derived from flood simulation results. The flood contour excludes the uppermost catchment local depth of flow and includes results only as a broad-based approach to meet the requirements of Section 149 (Property Certificate). Refer to Appendix L for specific affected shallow upper catchment overland flow areas.



This document has been prepared based on information provided by others as cited in the data sources. Stantec has not verified the accuracy and/or completeness of this information and shall not be responsible for any errors or omissions which may be incorporated herein as a result. Stantec assumes no responsibility for data supplied in electronic format, and the recipient accepts full responsibility for verifying the accuracy and completeness of the data.

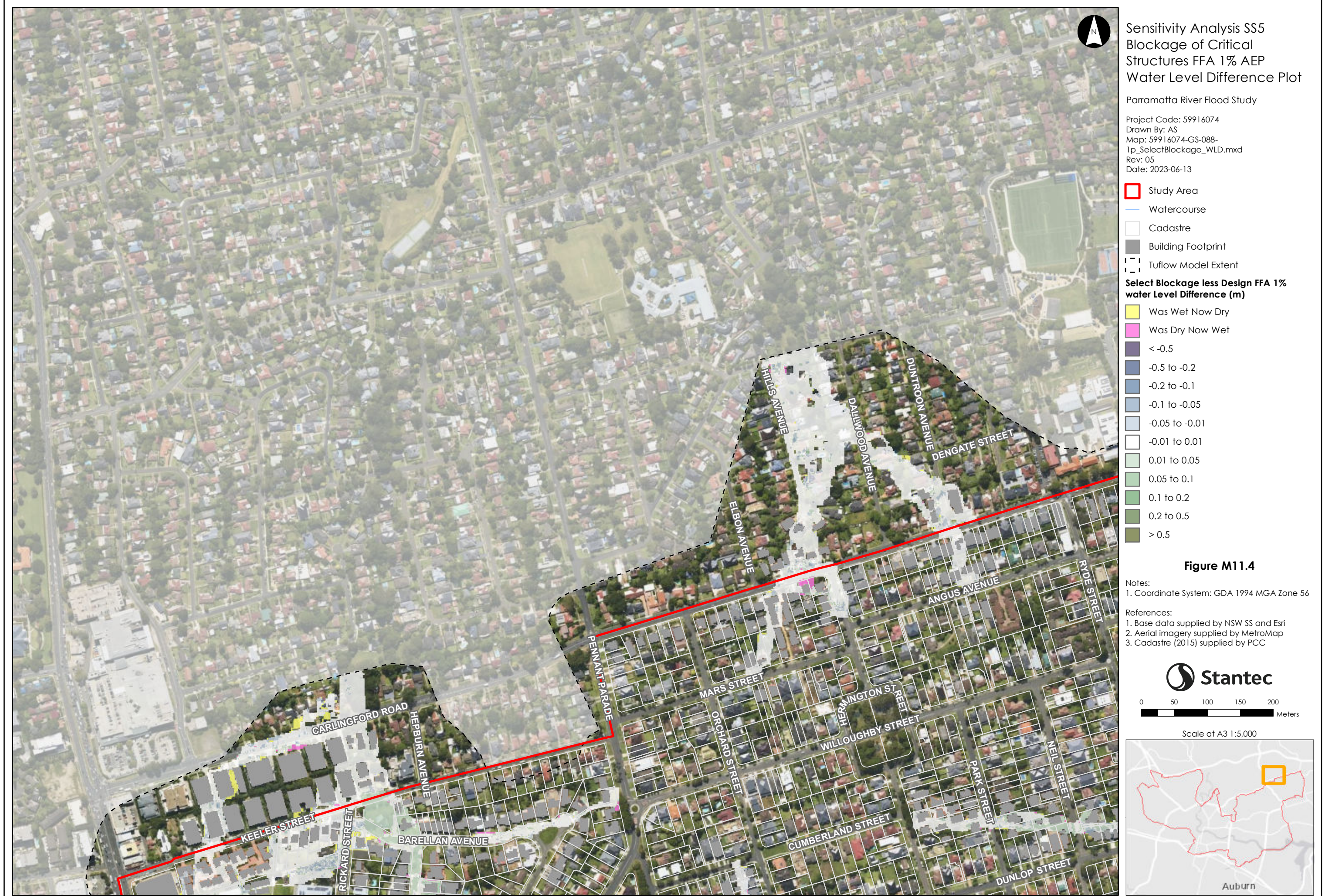
Please note contours reflect the actual extent of flooding within the Flood Planning Area including riverine floods, overland flow impacted by riverine backwater, and significant overland paths derived from flood simulation results. The flood contour excludes the uppermost catchment local depth of flow and includes results only as a broad-based approach to meet the requirements of Section 149 (Property Certificate). Refer to Appendix L for specific affected shallow upper catchment overland flow areas.



Please note contours reflect the actual extent of flooding within the Flood Planning Area including riverine floods, overland flow impacted by riverine backwater, and significant overland paths derived from flood simulation results. The flood contour excludes the uppermost catchment local depth of flow and includes results only as a broad-based approach to meet the requirements of Section 149 (Property Certificate). Refer to Appendix L for specific affected shallow upper catchment overland flow areas.



Please note contours reflect the actual extent of flooding within the Flood Planning Area including riverine floods, overland flow impacted by riverine backwater, and significant overland paths derived from flood simulation results. The flood contour excludes the uppermost catchment local depth of flow and includes results only as a broad-based approach to meet the requirements of Section 14.9 (Property Certificate). Refer to Appendix L for specific affected shallow upper catchment overland flow areas.



Please note contours reflect the actual extent of flooding within the Flood Planning Area including riverine floods, overland flow impacted by riverine backwater, and significant overland paths derived from flood simulation results. The flood contour excludes the uppermost catchment local depth of flow and includes results only as a broad-based approach to meet the requirements of Section 149 (Property Certificate). Refer to Appendix L for specific affected shallow upper catchment overland flow areas.



Please note contours reflect the actual extent of flooding within the Flood Planning Area including riverine floods, overland flow impacted by riverine backwater, and significant overland paths derived from flood simulation results. The flood contour excludes the uppermost catchment local depth of flow and includes results only as a broad-based approach to meet the requirements of Section 149 (Property Certificate). Refer to Appendix L for specific affected shallow upper catchment overland flow areas.



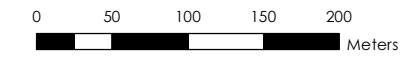
Sensitivity Analysis SS5
 Blockage of Critical Structures FFA 1% AEP
 Water Level Difference Plot

Parramatta River Flood Study
 Project Code: 59916074
 Drawn By: AS
 Map: 59916074-GS-088-1p_SelectBlockage_WLD.mxd
 Rev: 05
 Date: 2023-06-13

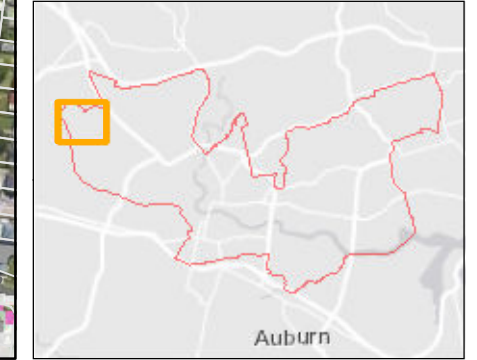
- Study Area
 - Watercourse
 - Cadastre
 - Building Footprint
 - Tuflow Model Extent
- Select Blockage less Design FFA 1% water Level Difference (m)**
- Was Wet Now Dry
 - Was Dry Now Wet
 - < -0.5
 - 0.5 to -0.2
 - 0.2 to -0.1
 - 0.1 to -0.05
 - 0.05 to -0.01
 - 0.01 to 0.01
 - 0.01 to 0.05
 - 0.05 to 0.1
 - 0.1 to 0.2
 - 0.2 to 0.5
 - > 0.5

Figure M11.6

- Notes:
1. Coordinate System: GDA 1994 MGA Zone 56
- References:
1. Base data supplied by NSW SS and Esri
 2. Aerial imagery supplied by MetroMap
 3. Cadastre (2015) supplied by PCC



Scale at A3 1:5,000



Please note contours reflect the actual extent of flooding within the Flood Planning Area including riverine floods, overland flow impacted by riverine backwater, and significant overland paths derived from flood simulation results. The flood contour excludes the uppermost catchment local depth of flow and includes results only as a broad-based approach to meet the requirements of Section 149 (Property Certificate). Refer to Appendix L for specific affected shallow upper catchment overland flow areas.



Please note contours reflect the actual extent of flooding within the Flood Planning Area including riverine floods, overland flow impacted by riverine backwater, and significant overland paths derived from flood simulation results. The flood contour excludes the uppermost catchment local depth of flow and includes results only as a broad-based approach to meet the requirements of Section 14.9 (Property Certificate). Refer to Appendix L for specific affected shallow upper catchment overland flow areas.



Please note contours reflect the actual extent of flooding within the Flood Planning Area including riverine floods, overland flow impacted by riverine backwater, and significant overland paths derived from flood simulation results. The flood contour excludes the uppermost catchment local depth of flow and includes results only as a broad-based approach to meet the requirements of Section 149 (Property Certificate). Refer to Appendix L for specific affected shallow upper catchment overland flow areas.



Sensitivity Analysis SS5
 Blockage of Critical Structures FFA 1% AEP
 Water Level Difference Plot

Parramatta River Flood Study

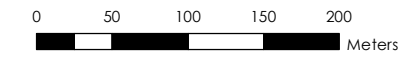
Project Code: 59916074
 Drawn By: AS
 Map: 59916074-GS-088-1p_SelectBlockage_WLD.mxd
 Rev: 05
 Date: 2023-06-13

- Study Area
 - Watercourse
 - Cadastre
 - Building Footprint
 - Tuflow Model Extent
- Select Blockage less Design FFA 1% water Level Difference (m)**
- Was Wet Now Dry
 - Was Dry Now Wet
 - < -0.5
 - 0.5 to -0.2
 - 0.2 to -0.1
 - 0.1 to -0.05
 - 0.05 to -0.01
 - 0.01 to 0.01
 - 0.01 to 0.05
 - 0.05 to 0.1
 - 0.1 to 0.2
 - 0.2 to 0.5
 - > 0.5

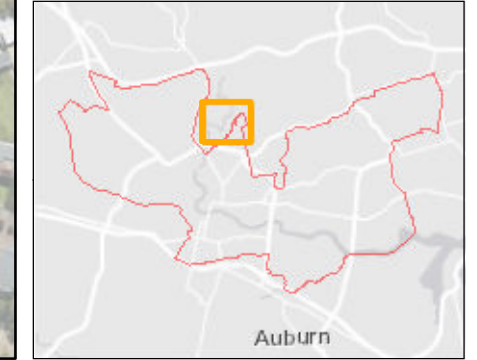
Figure M11.9

Notes:
 1. Coordinate System: GDA 1994 MGA Zone 56

References:
 1. Base data supplied by NSW SS and Esri
 2. Aerial imagery supplied by MetroMap
 3. Cadastre (2015) supplied by PCC



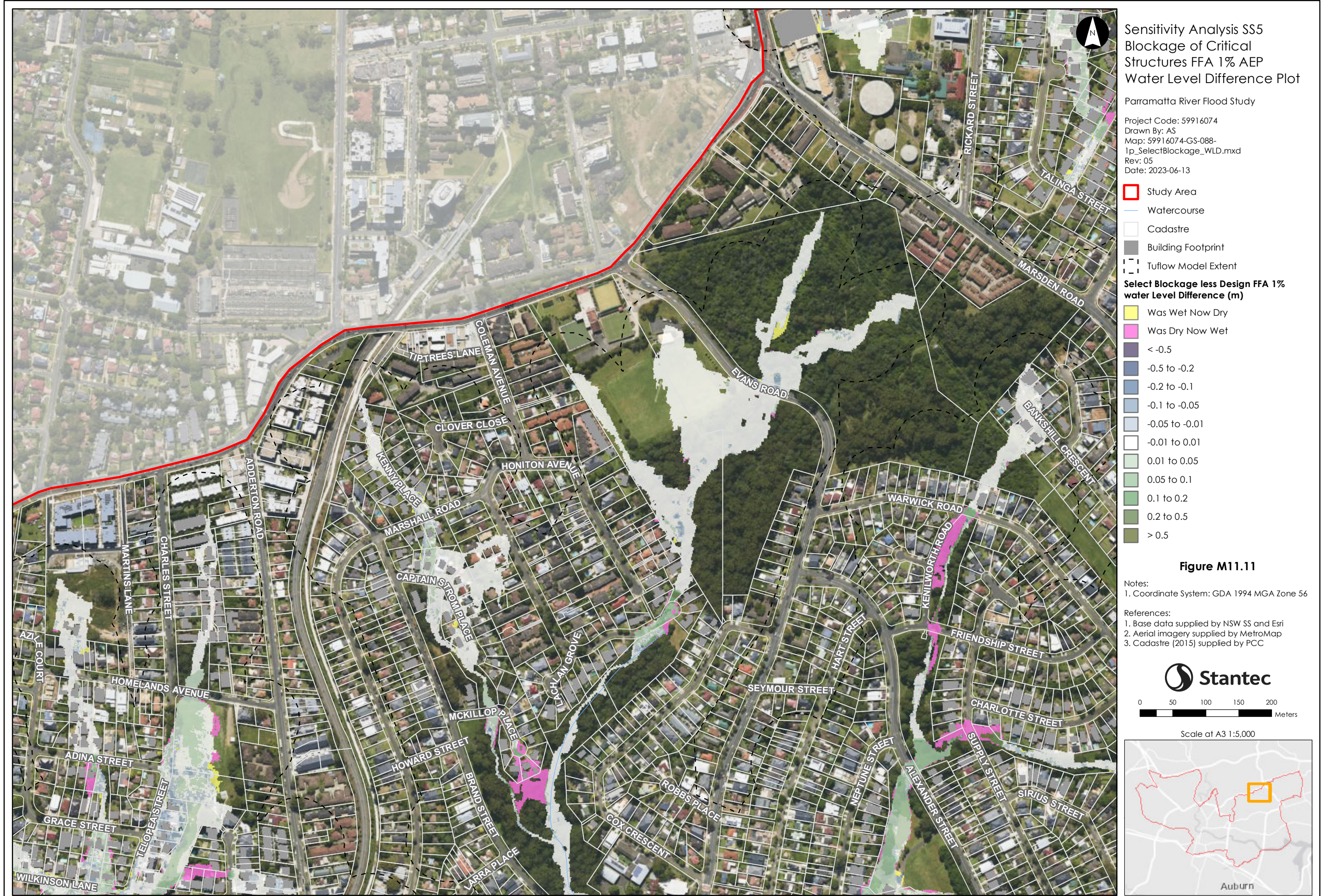
Scale at A3 1:5,000



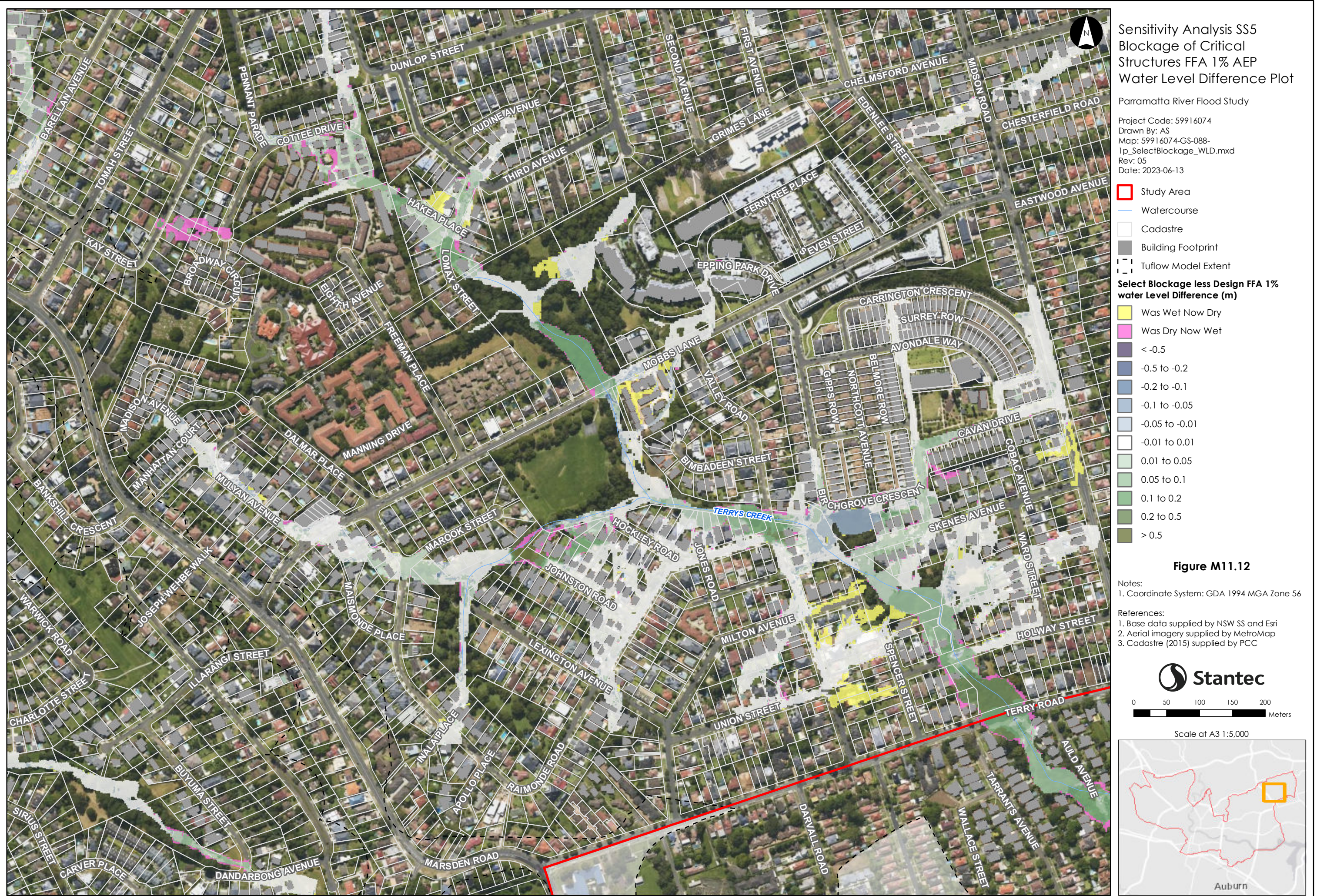
Please note contours reflect the actual extent of flooding within the Flood Planning Area including riverine floods, overland flow impacted by riverine backwater, and significant overland paths derived from flood simulation results. The flood contour excludes the uppermost catchment local depth of flow and includes results only as a broad-based approach to meet the requirements of Section 149 (Property Certificate). Refer to Appendix L for specific affected shallow upper catchment overland flow areas.



Please note contours reflect the actual extent of flooding within the Flood Planning Area including riverine floods, overland flow impacted by riverine backwater, and significant overland paths derived from flood simulation results. The flood contour excludes the uppermost catchment local depth of flow and includes results only as a broad-based approach to meet the requirements of Section 149 (Property Certificate). Refer to Appendix L for specific affected shallow upper catchment overland flow areas.



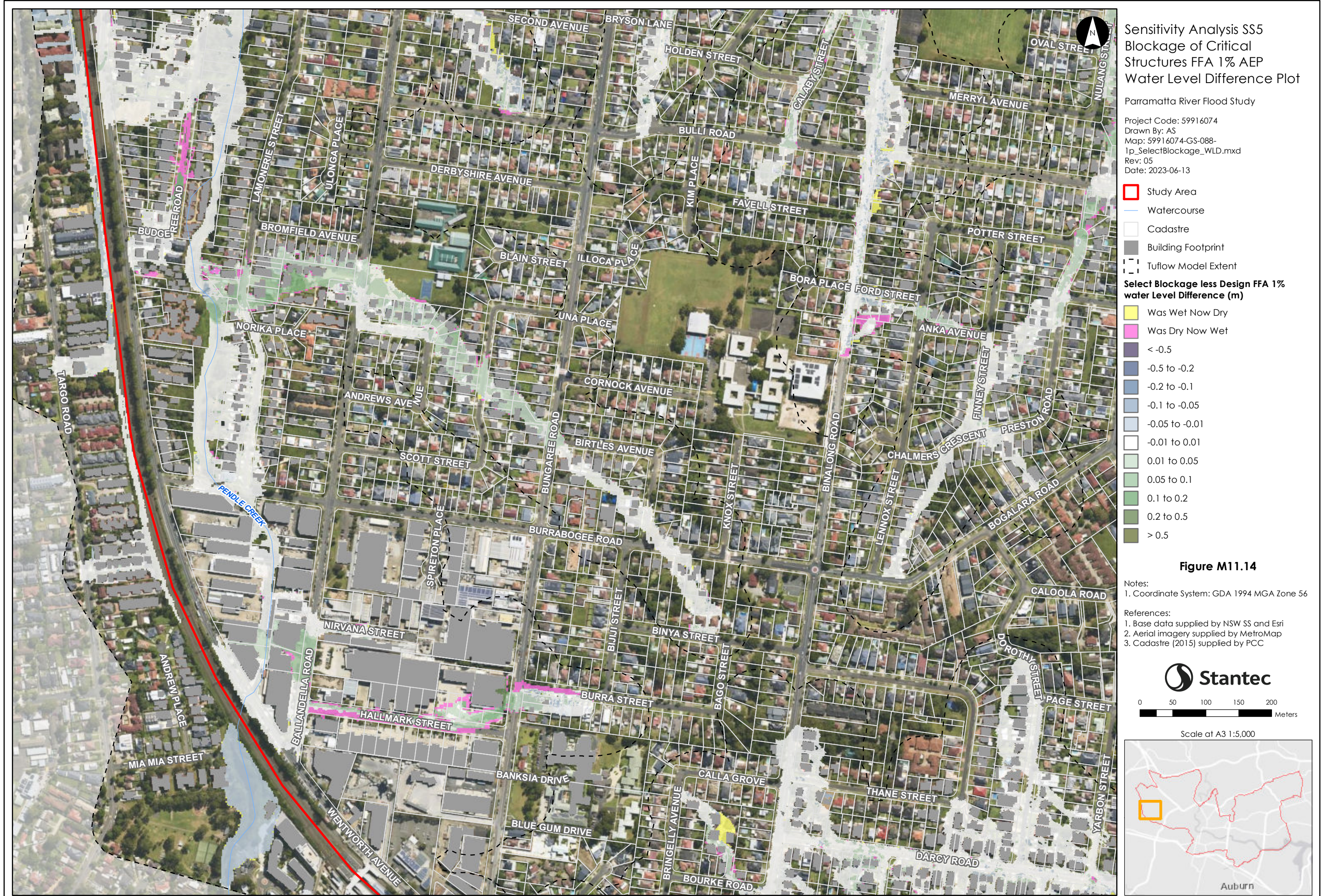
Please note contours reflect the actual extent of flooding within the Flood Planning Area including riverine floods, overland flow impacted by riverine backwater, and significant overland paths derived from flood simulation results. The flood contour excludes the uppermost catchment local depth of flow and includes results only as a broad-based approach to meet the requirements of Section 149 (Property Certificate). Refer to Appendix L for specific affected shallow upper catchment overland flow areas.



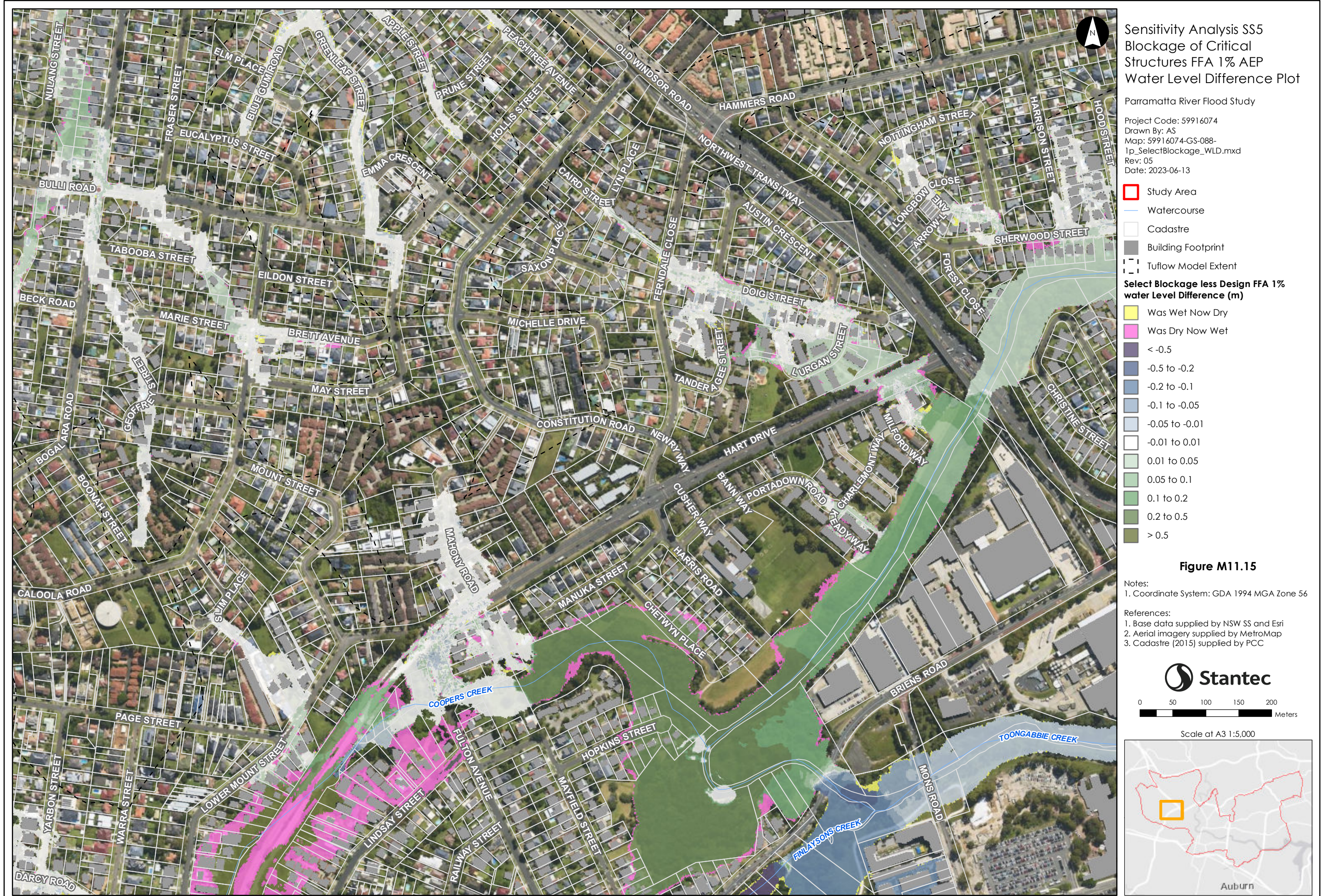
Please note contours reflect the actual extent of flooding within the Flood Planning Area including riverine floods, overland flow impacted by riverine backwater, and significant overland paths derived from flood simulation results. The flood contour excludes the uppermost catchment local depth of flow and includes results only as a broad-based approach to meet the requirements of Section 14.9 (Property Certificate). Refer to Appendix L for specific affected shallow upper catchment overland flow areas.



Please note contours reflect the actual extent of flooding within the Flood Planning Area including riverine floods, overland flow impacted by riverine backwater, and significant overland paths derived from flood simulation results. The flood contour excludes the uppermost catchment local depth of flow and includes results only as a broad-based approach to meet the requirements of Section 149 (Property Certificate). Refer to Appendix L for specific affected shallow upper catchment overland flow areas.



Please note contours reflect the actual extent of flooding within the Flood Planning Area including riverine floods, overland flow impacted by riverine backwater, and significant overland paths derived from flood simulation results. The flood contour excludes the uppermost catchment local depth of flow and includes results only as a broad-based approach to meet the requirements of Section 149 (Property Certificate). Refer to Appendix L for specific affected shallow upper catchment overland flow areas.



Please note contours reflect the actual extent of flooding within the Flood Planning Area including riverine floods, overland flow impacted by riverine backwater, and significant overland paths derived from flood simulation results. The flood contour excludes the uppermost catchment local depth of flow and includes results only as a broad-based approach to meet the requirements of Section 149 (Property Certificate). Refer to Appendix L for specific affected shallow upper catchment overland flow areas.



Please note contours reflect the actual extent of flooding within the Flood Planning Area including riverine floods, overland flow impacted by riverine backwater, and significant overland paths derived from flood simulation results. The flood contour excludes the uppermost catchment local depth of flow and includes results only as a broad-based approach to meet the requirements of Section 149 (Property Certificate). Refer to Appendix L for specific affected shallow upper catchment overland flow areas.



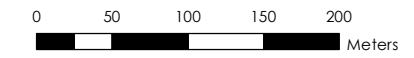
Sensitivity Analysis SS5
 Blockage of Critical Structures FFA 1% AEP
 Water Level Difference Plot

Parramatta River Flood Study
 Project Code: 59916074
 Drawn By: AS
 Map: 59916074-GS-088-1p_SelectBlockage_WLD.mxd
 Rev: 05
 Date: 2023-06-13

- Study Area
 - Watercourse
 - Cadastre
 - Building Footprint
 - Tufflow Model Extent
- Select Blockage less Design FFA 1% water Level Difference (m)**
- Was Wet Now Dry
 - Was Dry Now Wet
 - < -0.5
 - 0.5 to -0.2
 - 0.2 to -0.1
 - 0.1 to -0.05
 - 0.05 to -0.01
 - 0.01 to 0.01
 - 0.01 to 0.05
 - 0.05 to 0.1
 - 0.1 to 0.2
 - 0.2 to 0.5
 - > 0.5

Figure M11.17

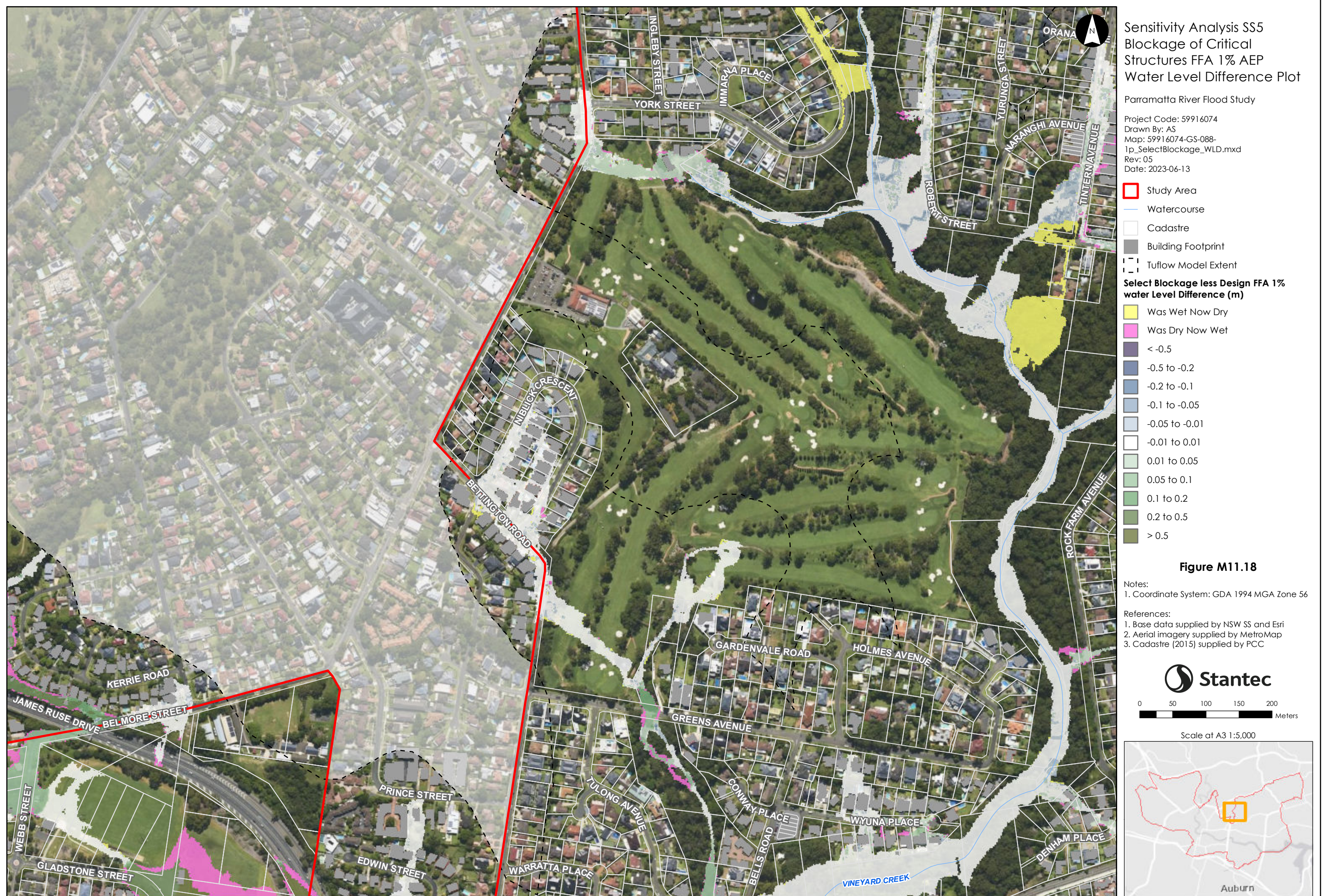
- Notes:
1. Coordinate System: GDA 1994 MGA Zone 56
- References:
1. Base data supplied by NSW SS and Esri
 2. Aerial imagery supplied by MetroMap
 3. Cadastre (2015) supplied by PCC



Scale at A3 1:5,000



Please note contours reflect the actual extent of flooding within the Flood Planning Area including riverine floods, overland flow impacted by riverine backwater, and significant overland paths derived from flood simulation results. The flood contour excludes the uppermost catchment local depth of flow and includes results only as a broad-based approach to meet the requirements of Section 149 (Property Certificate). Refer to Appendix L for specific affected shallow upper catchment overland flow areas.



Please note contours reflect the actual extent of flooding within the Flood Planning Area including riverine floods, overland flow impacted by riverine backwater, and significant overland paths derived from flood simulation results. The flood contour excludes the uppermost catchment local depth of flow and includes results only as a broad-based approach to meet the requirements of Section 149 (Property Certificate). Refer to Appendix L for specific affected shallow upper catchment overland flow areas.



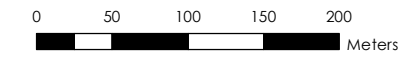
Sensitivity Analysis SS5
Blockage of Critical Structures FFA 1% AEP
Water Level Difference Plot

Parramatta River Flood Study
Project Code: 59916074
Drawn By: AS
Map: 59916074-GS-088-1p_SelectBlockage_WLD.mxd
Rev: 05
Date: 2023-06-13

- Study Area
 - Watercourse
 - Cadastre
 - Building Footprint
 - Tuflow Model Extent
- Select Blockage less Design FFA 1% water Level Difference (m)**
- Was Wet Now Dry
 - Was Dry Now Wet
 - < -0.5
 - 0.5 to -0.2
 - 0.2 to -0.1
 - 0.1 to -0.05
 - 0.05 to -0.01
 - 0.01 to 0.01
 - 0.01 to 0.05
 - 0.05 to 0.1
 - 0.1 to 0.2
 - 0.2 to 0.5
 - > 0.5

Figure M11.19

- Notes:
1. Coordinate System: GDA 1994 MGA Zone 56
- References:
1. Base data supplied by NSW SS and Esri
 2. Aerial imagery supplied by MetroMap
 3. Cadastre (2015) supplied by PCC



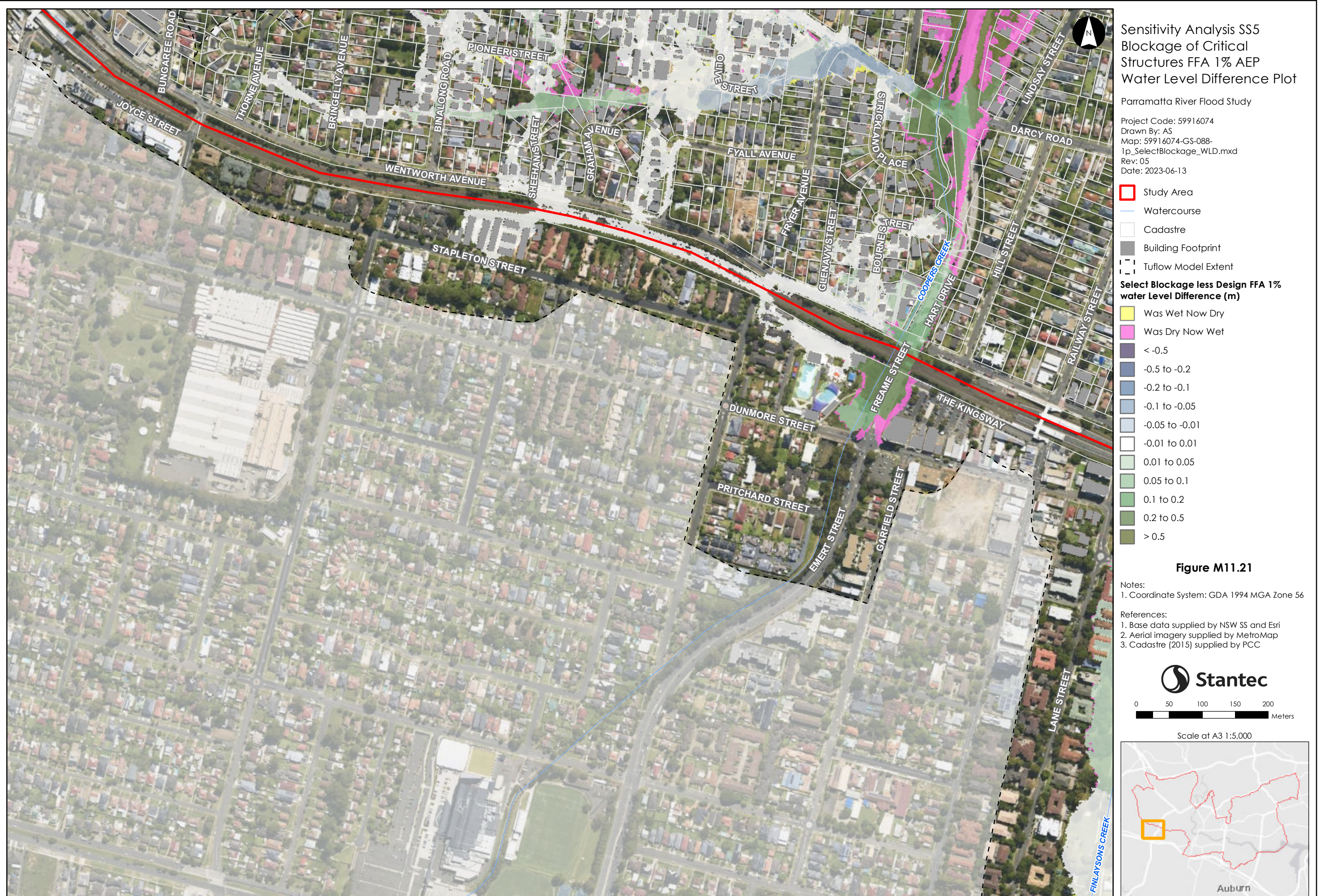
Scale at A3 1:5,000



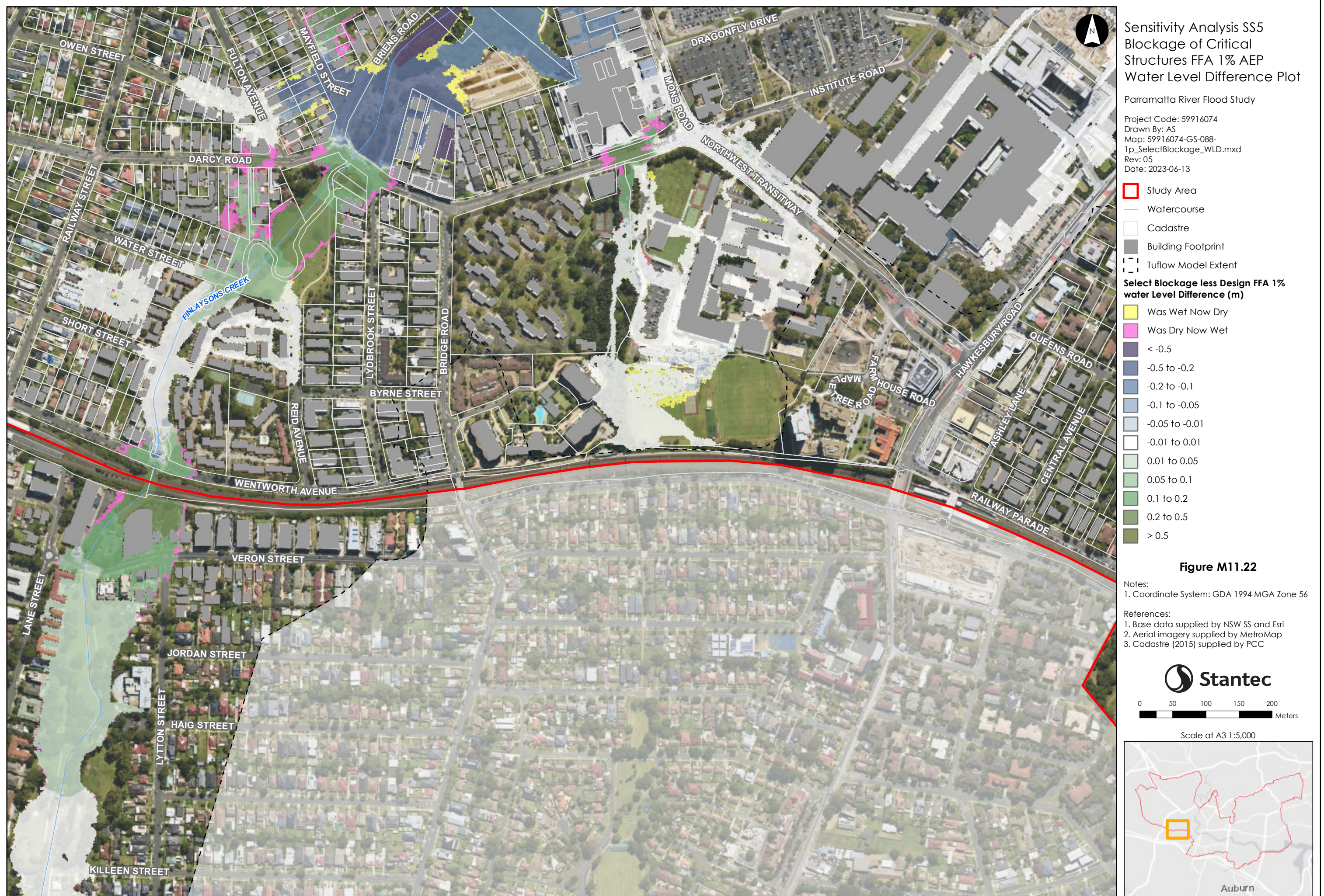
Please note contours reflect the actual extent of flooding within the Flood Planning Area including riverine floods, overland flow impacted by riverine backwater, and significant overland paths derived from flood simulation results. The flood contour excludes the uppermost catchment local depth of flow and includes results only as a broad-based approach to meet the requirements of Section 149 (Property Certificate). Refer to Appendix L for specific affected shallow upper catchment overland flow areas.



Please note contours reflect the actual extent of flooding within the Flood Planning Area including riverine floods, overland flow impacted by riverine backwater, and significant overland paths derived from flood simulation results. The flood contour excludes the uppermost catchment local depth of flow and includes results only as a broad-based approach to meet the requirements of Section 149 (Property Certificate). Refer to Appendix L for specific affected shallow upper catchment overland flow areas.



Please note contours reflect the actual extent of flooding within the Flood Planning Area including riverine floods, overland flow impacted by riverine backwater, and significant overland paths derived from flood simulation results. The flood contour excludes the uppermost catchment local depth of flow and includes results only as a broad-based approach to meet the requirements of Section 14.9 (Property Certificate). Refer to Appendix L for specific affected shallow upper catchment overland flow areas.



Please note contours reflect the actual extent of flooding within the Flood Planning Area including riverine floods, overland flow impacted by riverine backwater, and significant overland paths derived from flood simulation results. The flood contour excludes the uppermost catchment local depth of flow and includes results only as a broad-based approach to meet the requirements of Section 14.9 (Property Certificate). Refer to Appendix L for specific affected shallow upper catchment overland flow areas.



Please note contours reflect the actual extent of flooding within the Flood Planning Area including riverine floods, overland flow impacted by riverine backwater, and significant overland paths derived from flood simulation results. The flood contour excludes the uppermost catchment local depth of flow and includes results only as a broad-based approach to meet the requirements of Section 149 (Property Certificate). Refer to Appendix L for specific affected shallow upper catchment overland flow areas.



Please note contours reflect the actual extent of flooding within the Flood Planning Area including riverine floods, overland flow impacted by riverine backwater, and significant overland paths derived from flood simulation results. The flood contour excludes the uppermost catchment local depth of flow and includes results only as a broad-based approach to meet the requirements of Section 149 (Property Certificate). Refer to Appendix L for specific affected shallow upper catchment overland flow areas.



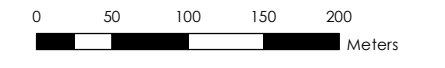
Sensitivity Analysis SS5
Blockage of Critical Structures FFA 1% AEP
Water Level Difference Plot

Parramatta River Flood Study
Project Code: 59916074
Drawn By: AS
Map: 59916074-GS-088-1p_SelectBlockage_WLD.mxd
Rev: 05
Date: 2023-06-13

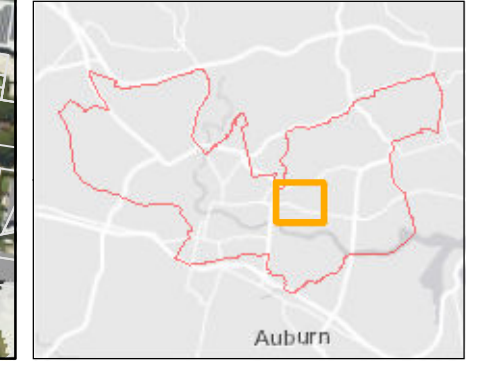
- Study Area
 - Watercourse
 - Cadastre
 - Building Footprint
 - Tufflow Model Extent
- Select Blockage less Design FFA 1% water Level Difference (m)**
- Was Wet Now Dry
 - Was Dry Now Wet
 - < -0.5
 - 0.5 to -0.2
 - 0.2 to -0.1
 - 0.1 to -0.05
 - 0.05 to -0.01
 - 0.01 to 0.01
 - 0.01 to 0.05
 - 0.05 to 0.1
 - 0.1 to 0.2
 - 0.2 to 0.5
 - > 0.5

Figure M11.25

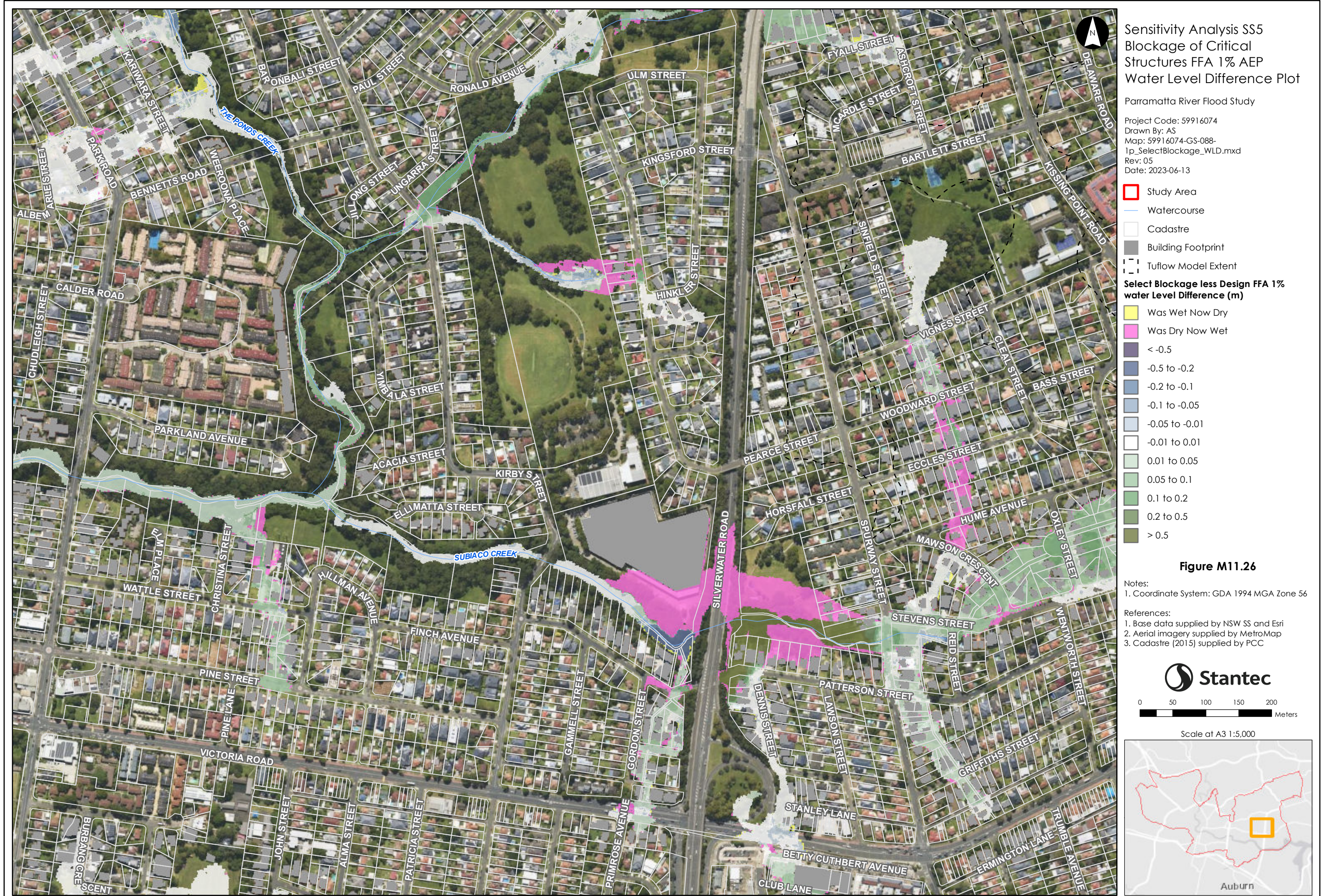
- Notes:
1. Coordinate System: GDA 1994 MGA Zone 56
- References:
1. Base data supplied by NSW SS and Esri
 2. Aerial imagery supplied by MetroMap
 3. Cadastre (2015) supplied by PCC



Scale at A3 1:5,000



Please note contours reflect the actual extent of flooding within the Flood Planning Area including riverine floods, overland flow impacted by riverine backwater, and significant overland paths derived from flood simulation results. The flood contour excludes the uppermost catchment local depth of flow and includes results only as a broad-based approach to meet the requirements of Section 149 (Property Certificate). Refer to Appendix L for specific affected shallow upper catchment overland flow areas.



Please note contours reflect the actual extent of flooding within the Flood Planning Area including riverine floods, overland flow impacted by riverine backwater, and significant overland paths derived from flood simulation results. The flood contour excludes the uppermost catchment local depth of flow and includes results only as a broad-based approach to meet the requirements of Section 149 (Property Certificate). Refer to Appendix L for specific affected shallow upper catchment overland flow areas.



Please note contours reflect the actual extent of flooding within the Flood Planning Area including riverine floods, overland flow impacted by riverine backwater, and significant overland paths derived from flood simulation results. The flood contour excludes the uppermost catchment local depth of flow and includes results only as a broad-based approach to meet the requirements of Section 149 (Property Certificate). Refer to Appendix L for specific affected shallow upper catchment overland flow areas.



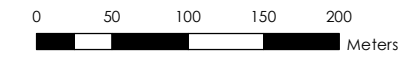
Sensitivity Analysis SS5
Blockage of Critical Structures FFA 1% AEP
Water Level Difference Plot

Parramatta River Flood Study
Project Code: 59916074
Drawn By: AS
Map: 59916074-GS-088-1p_SelectBlockage_WLD.mxd
Rev: 05
Date: 2023-06-13

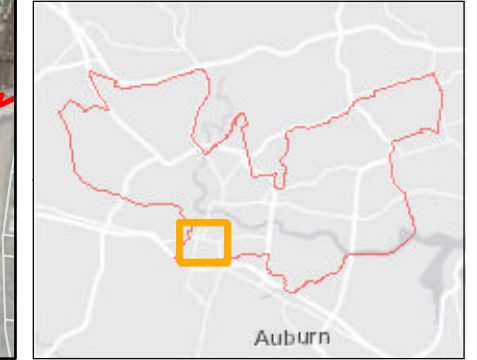
- Study Area
 - Watercourse
 - Cadastre
 - Building Footprint
 - Tufflow Model Extent
- Select Blockage less Design FFA 1% water Level Difference (m)**
- Was Wet Now Dry
 - Was Dry Now Wet
 - < -0.5
 - 0.5 to -0.2
 - 0.2 to -0.1
 - 0.1 to -0.05
 - 0.05 to -0.01
 - 0.01 to 0.01
 - 0.01 to 0.05
 - 0.05 to 0.1
 - 0.1 to 0.2
 - 0.2 to 0.5
 - > 0.5

Figure M11.28

- Notes:
1. Coordinate System: GDA 1994 MGA Zone 56
- References:
1. Base data supplied by NSW SS and Esri
 2. Aerial imagery supplied by MetroMap
 3. Cadastre (2015) supplied by PCC



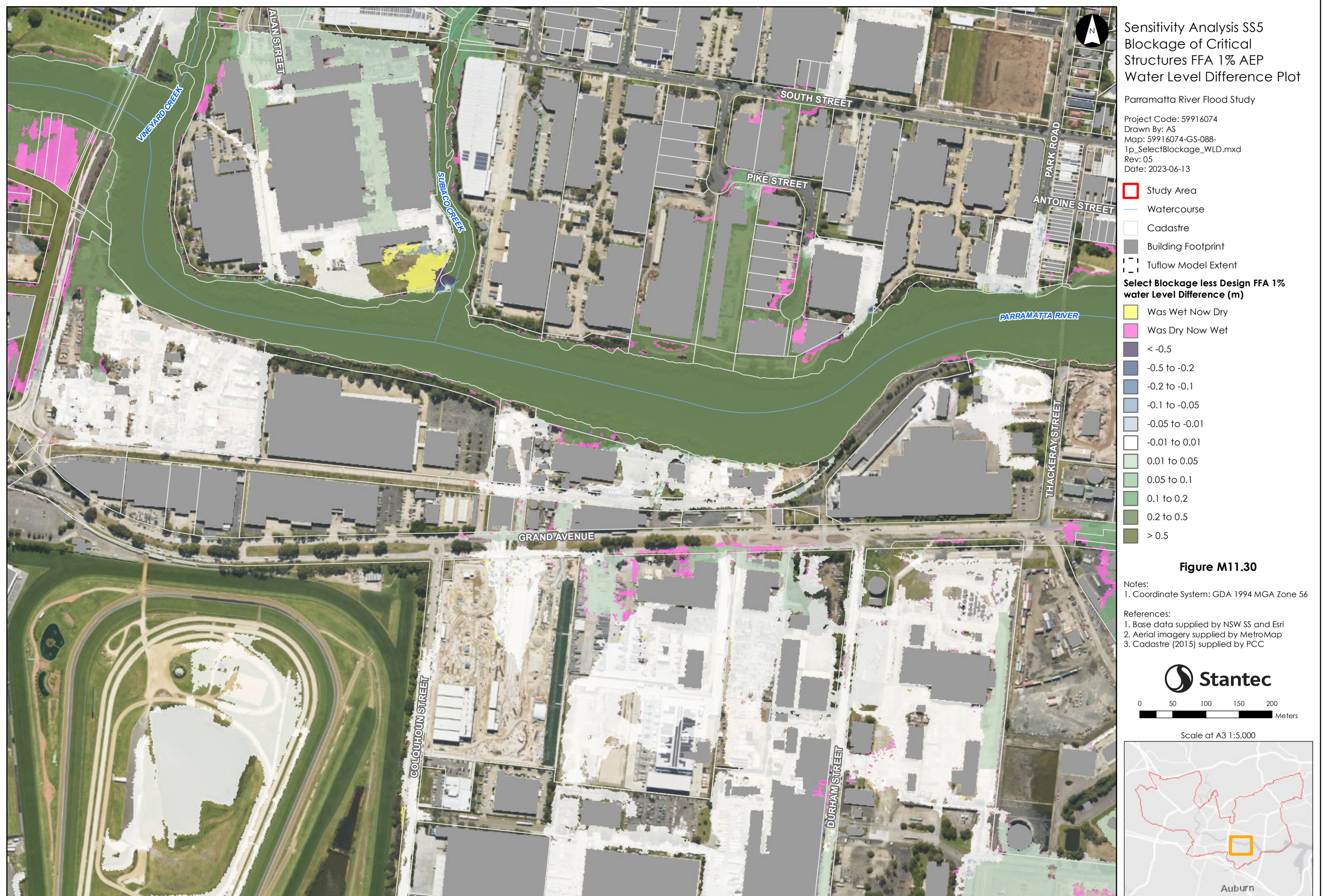
Scale at A3 1:5,000



Please note contours reflect the actual extent of flooding within the Flood Planning Area including riverine floods, overland flow impacted by riverine backwater, and significant overland paths derived from flood simulation results. The flood contour excludes the uppermost catchment local depth of flow and includes results only as a broad-based approach to meet the requirements of Section 14.9 (Property Certificate). Refer to Appendix L for specific affected shallow upper catchment overland flow areas.



Please note contours reflect the actual extent of flooding within the Flood Planning Area including riverine floods, overland flow impacted by riverine backwater, and significant overland paths derived from flood simulation results. The flood contour excludes the uppermost catchment local depth of flow and includes results only as a broad-based approach to meet the requirements of Section 149 (Property Certificate). Refer to Appendix L for specific affected shallow upper catchment overland flow areas.



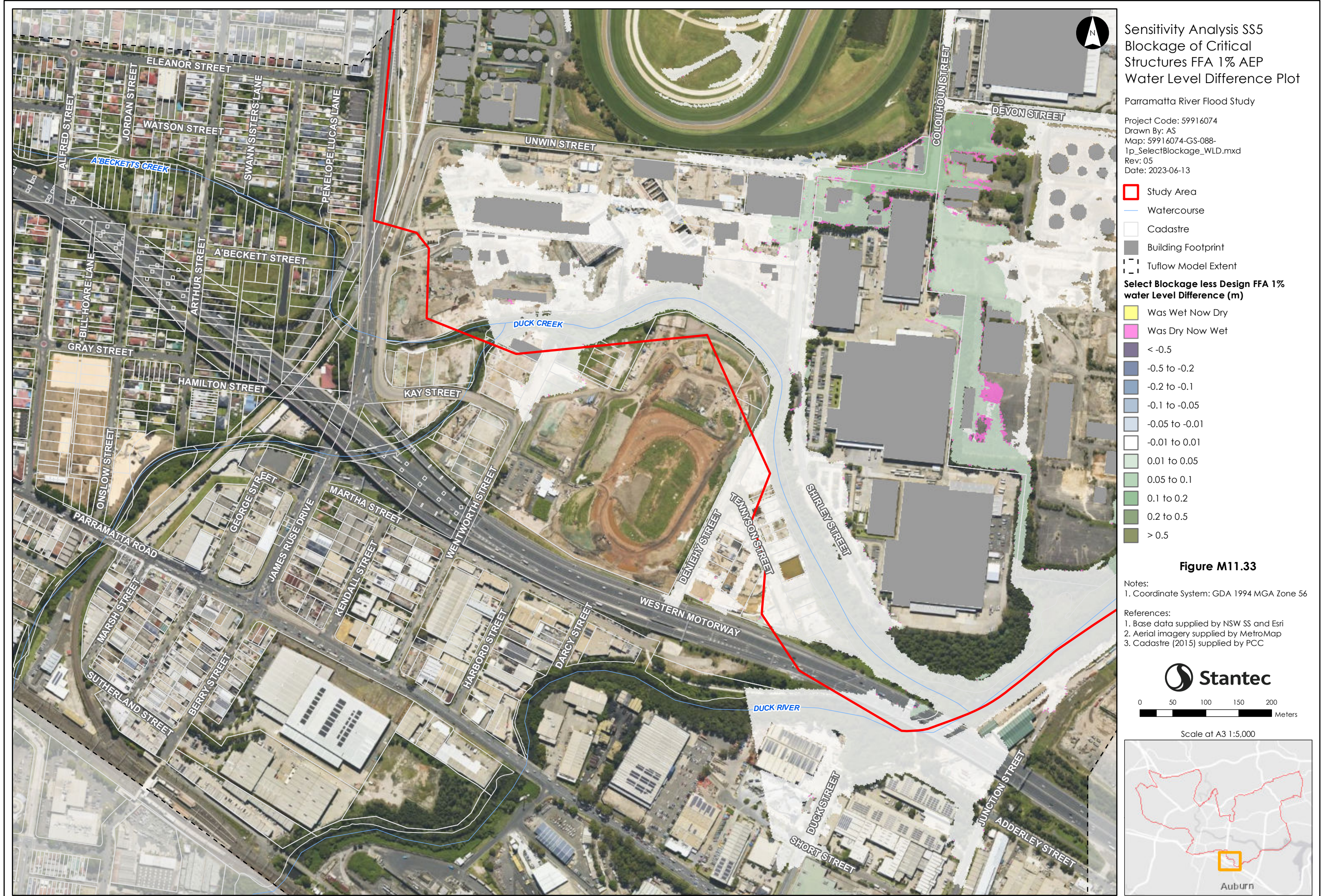
Please note contours reflect the actual extent of flooding within the Flood Planning Area including riverine floods, overland flow impacted by riverine backwater, and significant overland paths derived from flood simulation results. The flood contour excludes the uppermost catchment local depth of flow and includes results only as a broad-based approach to meet the requirements of Section 149 (Property Certificate). Refer to Appendix L for specific affected shallow upper catchment overland flow areas.



Please note contours reflect the actual extent of flooding within the Flood Planning Area including riverine backwater, and overland flow impacted by riverine backwater, and significant overland paths derived from flood simulation results. The flood contour excludes the uppermost catchment local depth of flow and includes results only as a broad-based approach to meet the requirements of Section 149 (Property Certificate). Refer to Appendix L for specific affected shallow upper catchment overland flow areas.



Please note contours reflect the actual extent of flooding within the Flood Planning Area including riverine floods, overland flow impacted by riverine backwater, and significant overland paths derived from flood simulation results. The flood contour excludes the uppermost catchment local depth of flow and includes results only as a broad-based approach to meet the requirements of Section 14.9 (Property Certificate). Refer to Appendix L for specific affected shallow upper catchment overland flow areas.



Please note contours reflect the actual extent of flooding within the Flood Planning Area including riverine floods, overland flow impacted by riverine backwater, and significant overland paths derived from flood simulation results. The flood contour excludes the uppermost catchment local depth of flow and includes results only as a broad-based approach to meet the requirements of Section 14.9 (Property Certificate). Refer to Appendix L for specific affected shallow upper catchment overland flow areas.

