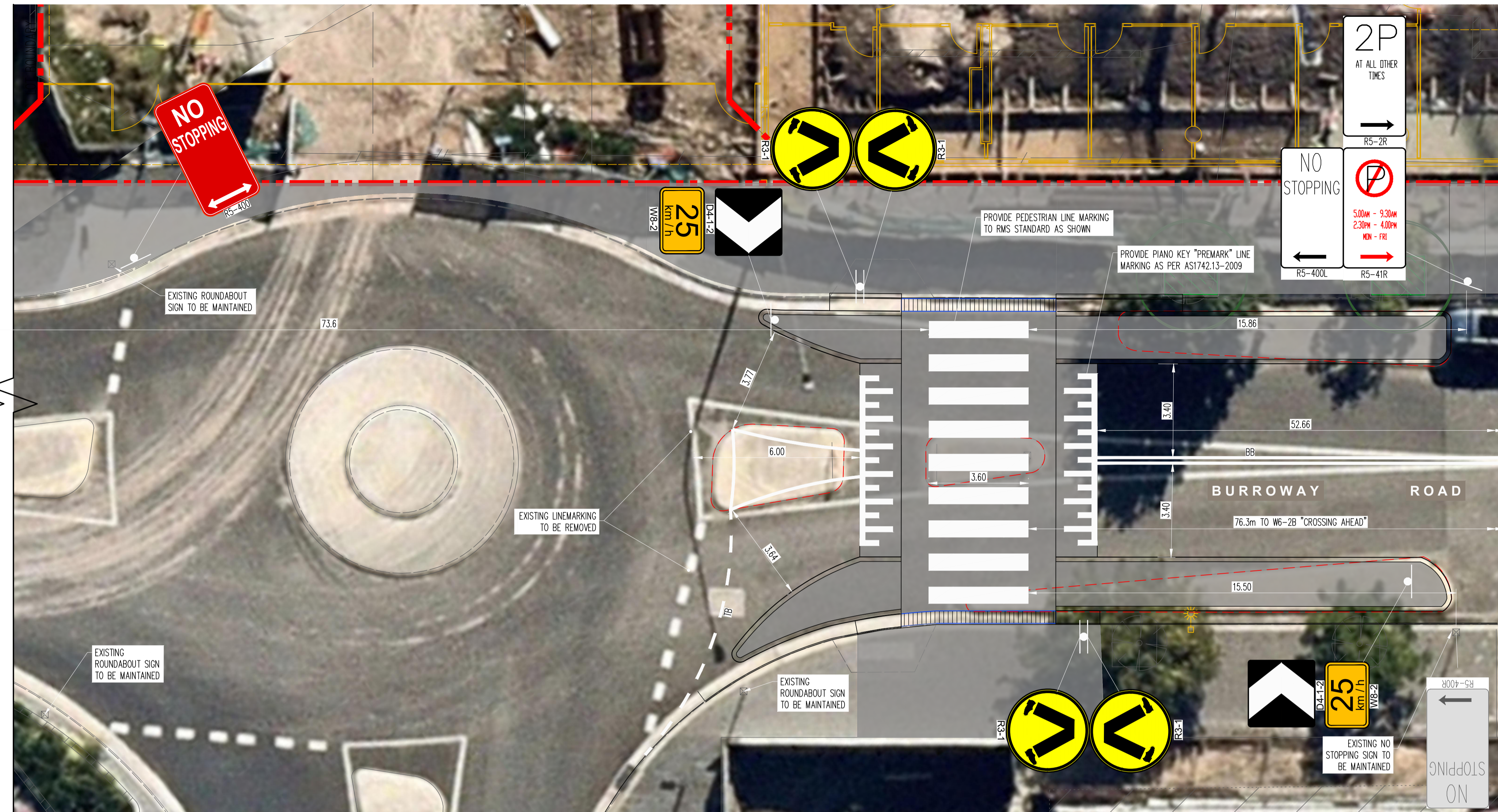


THIS DRAWING IS COPYRIGHT AND IS THE PROPERTY OF TAYLOR THOMSON WHITTING (NSW) PTY LTD AND MUST NOT BE USED WITHOUT AUTHORISATION. THIS DRAWING TO BE READ IN CONJUNCTION WITH ALL RELEVANT NOTES ON DRAWING SOPHS-TTW-CV-L0-03000

LINEMARKING LEGEND



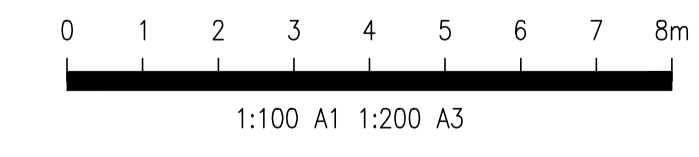
Line marking to be in accordance with AS1742.2 and the City of Parramatta's Traffic Committee approvals. All redundant line marking is to be removed.



FOR CONTINUATION REFER BELOW



FOR CONTINUATION REFER ABOVE



FOR INFORMATION

REV	DESCRIPTION	CHK	DR	DATE	REV	DESCRIPTION	CHK	DR	DATE
A1	06 ISSUE FOR INFORMATION	SF	LA	17.10.23					
	05 ISSUE FOR INFORMATION	SF	AW	11.10.23					
	04 ISSUE FOR INFORMATION	SF	AW	10.08.23					
	03 ISSUE FOR INFORMATION	SF	AW	21.07.23					
	02 ISSUE FOR INFORMATION	SF	AW	28.06.23					
	01 ISSUE FOR COORDINATION	SF	AW	15.06.23					

ARCHITECT:
WOODS BAGOT
LEVEL 2
60 CARRINGTON STREET
SYDNEY NSW 2000
PO BOX N19
GROSVENOR PLACE NSW 1220

ENGINEER:

612 9439 7288 | Level 6, 73 Miller Street, North Sydney, NSW 2060

PROJECT:
SYDNEY OLYMPIC PARK HIGH SCHOOL (SOPHS)
7-9 BURROWAY ROAD,
WENTWORTH POINT NSW 2127

DRAWING NAME:
PUBLIC DOMAIN ROAD SIGNAGE AND LINEMARKING PLAN

TTW JOB No: 211266

SCALE: A1 1:100 DRAWN BY AW AUTHORIZED BY AW

DRAWING No: SOPHS-TTW-CV-L0-03022 REVISION 06

Plot File Created: Oct 17, 2023 - 7:04pm