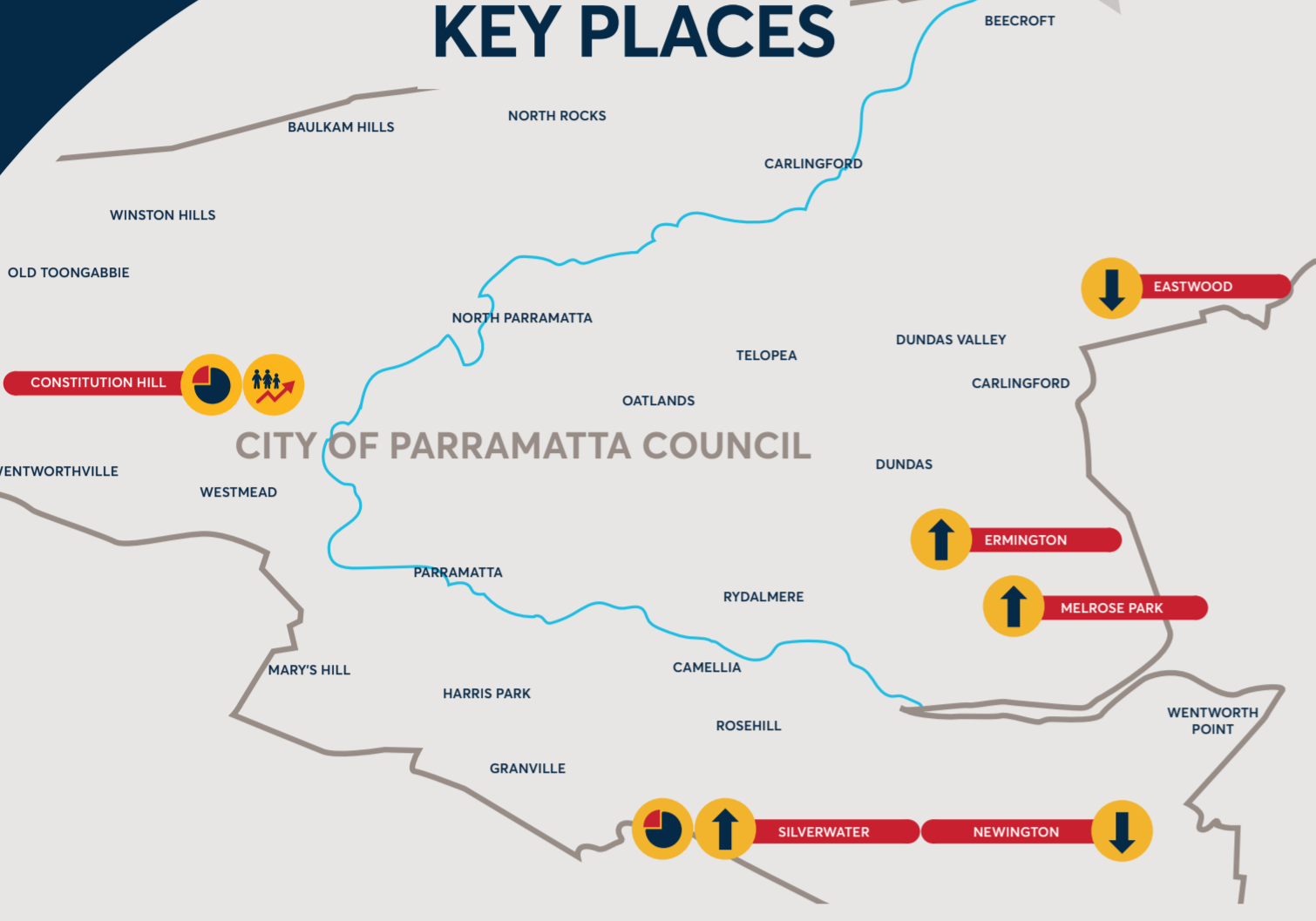


FIRST PEOPLES

Parramatta has been home to the Darug people for some 60,000 years and they maintain an ongoing connection to Country. Since colonisation, Parramatta has become home to many other First Peoples who also have a unique historical and contemporary relationship to the area.

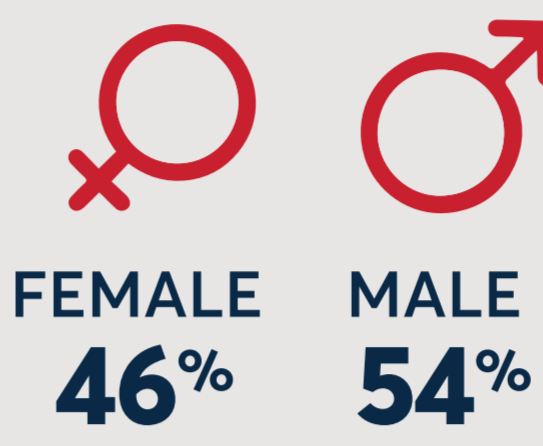
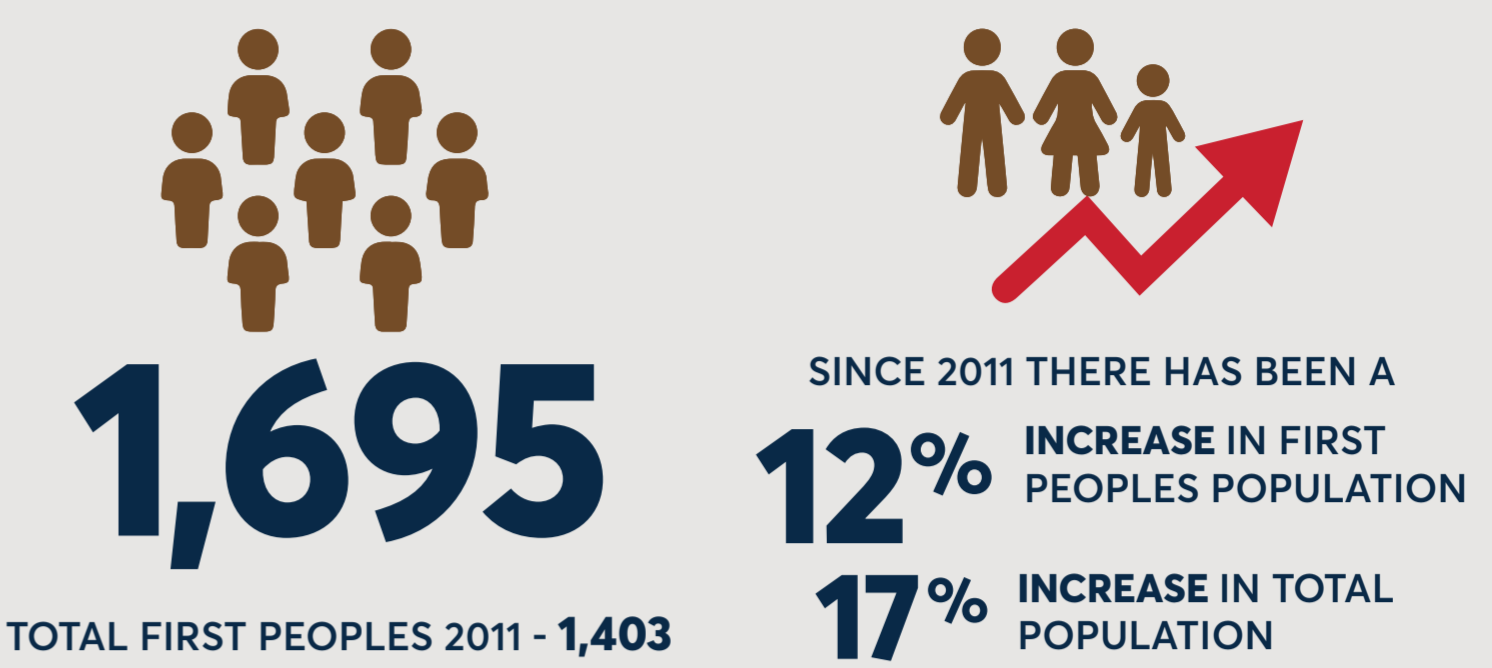
COMPARED WITH PARRAMATTA AS A WHOLE, OUR FIRST PEOPLES RESIDENTS ARE...

LOCATED IN KEY PLACES

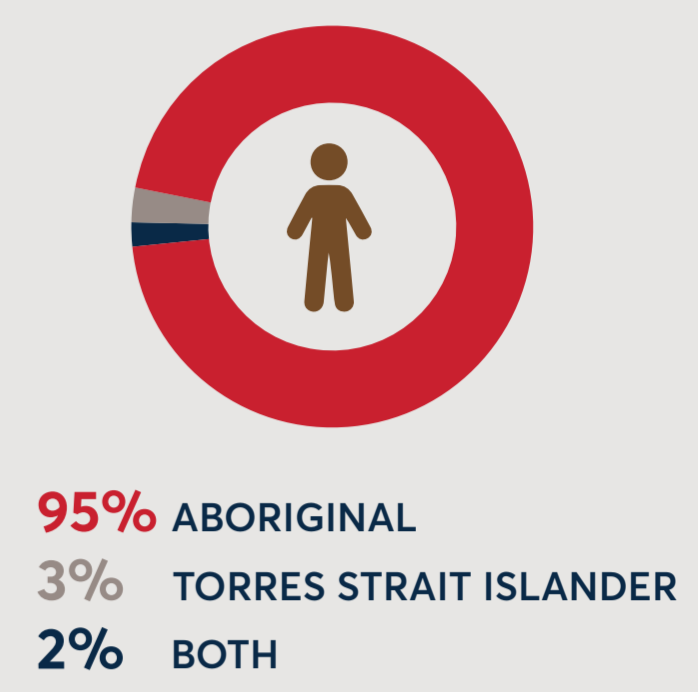


- Silverwater has the highest proportion of First Peoples of any suburb with 8.7% of Silverwater identifying as First Peoples, or 21% of Parramatta's total First Peoples population. This is due to over-representation of First Peoples in Silverwater Correctional Complex.
- Constitution Hill has had the most growth in First Peoples residents with a 5.8% increase, or +33 people, over 5 years.
- Silverwater also has the highest number of First Peoples of any suburb at 363. Ermington/Melrose Park have 133.
- Eastwood and Newington have the lowest number of First Peoples residents at 6 people each.

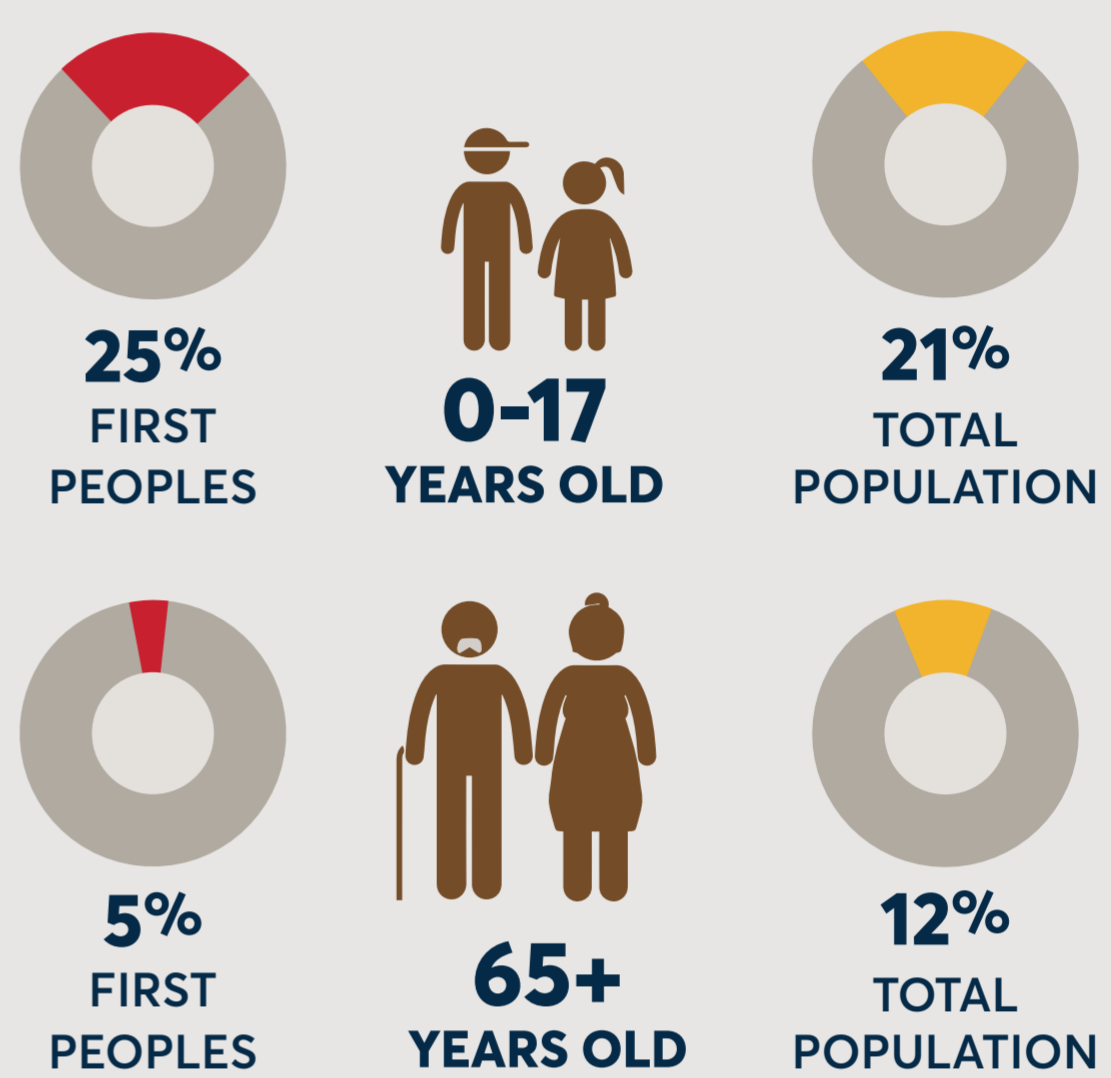
A SMALL GROUP BUT FAST-GROWING GROUP



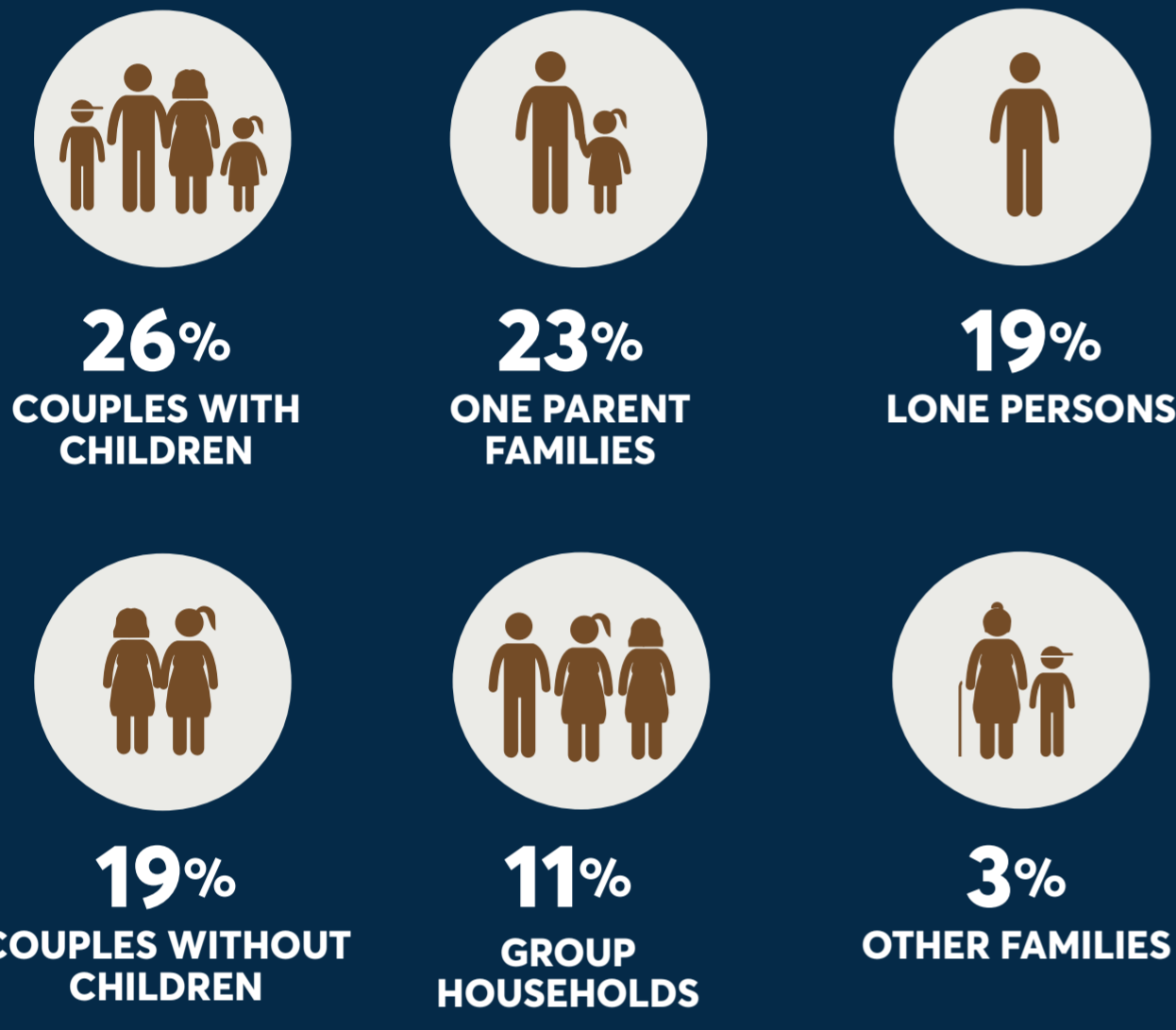
MEDIAN AGE 28



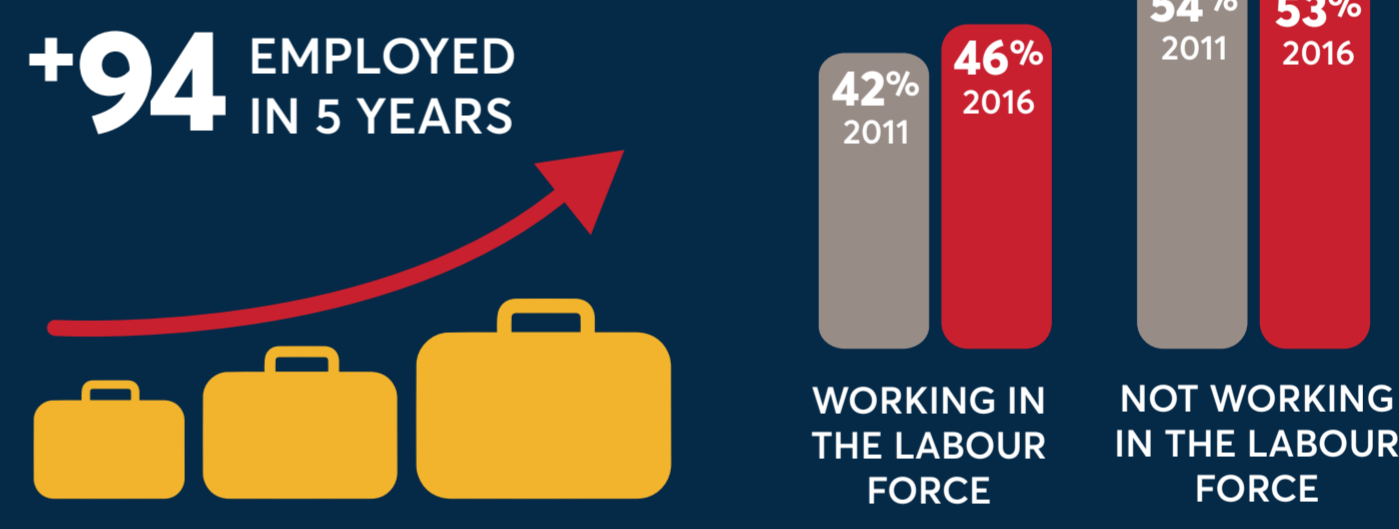
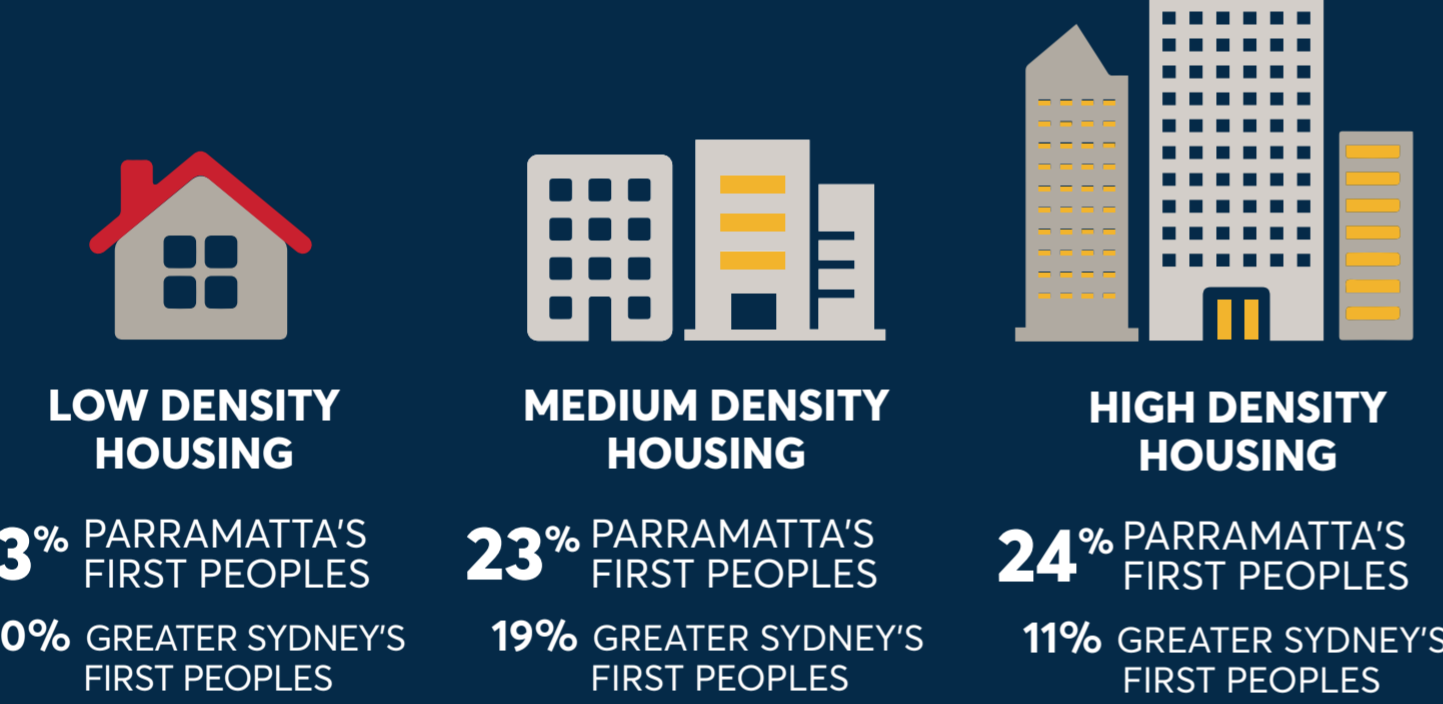
YOUNGER THAN THE GENERAL POPULATION



A MIX OF HOUSEHOLD TYPES



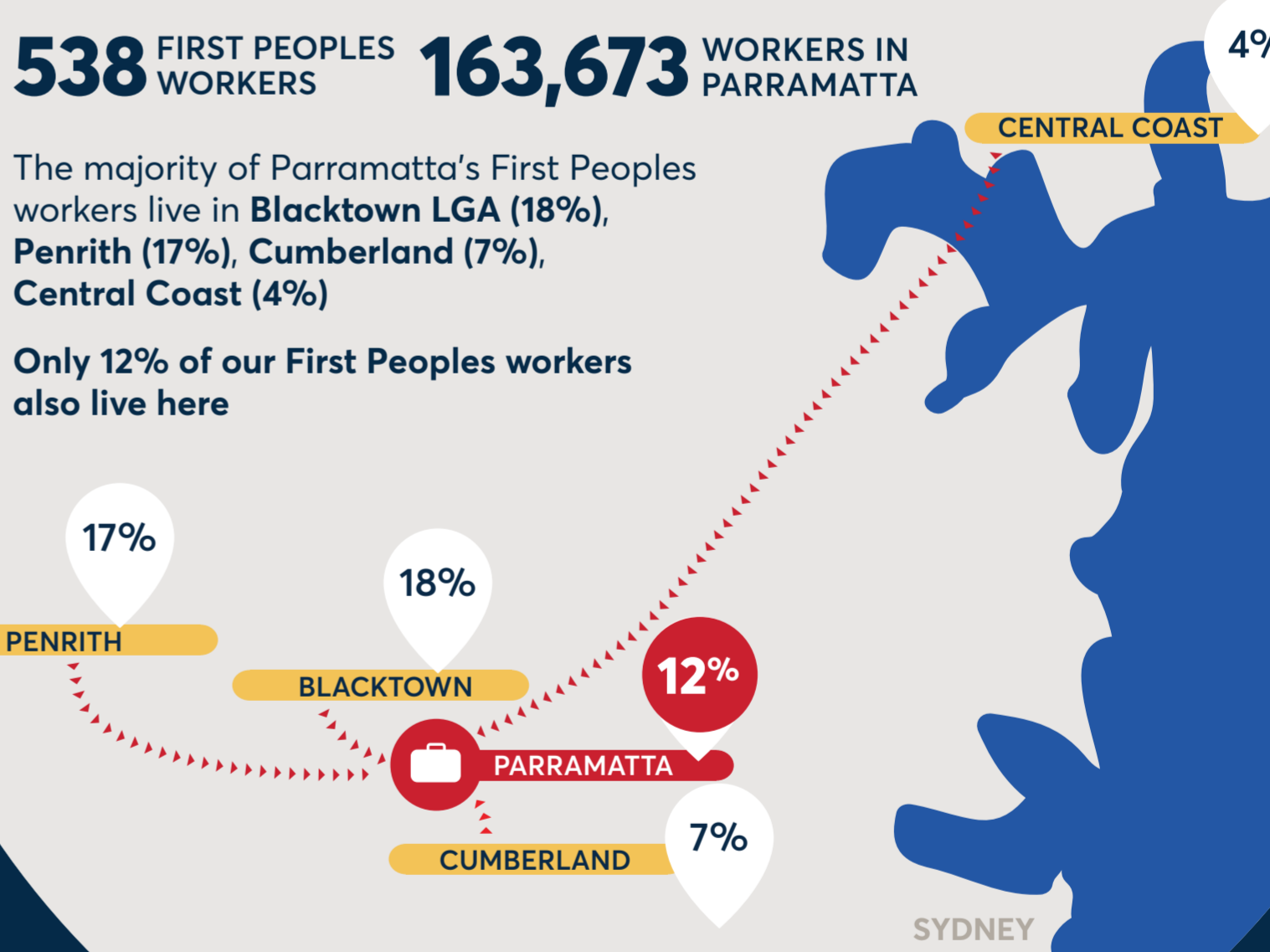
LIVING IN LOW DENSITY HOUSING



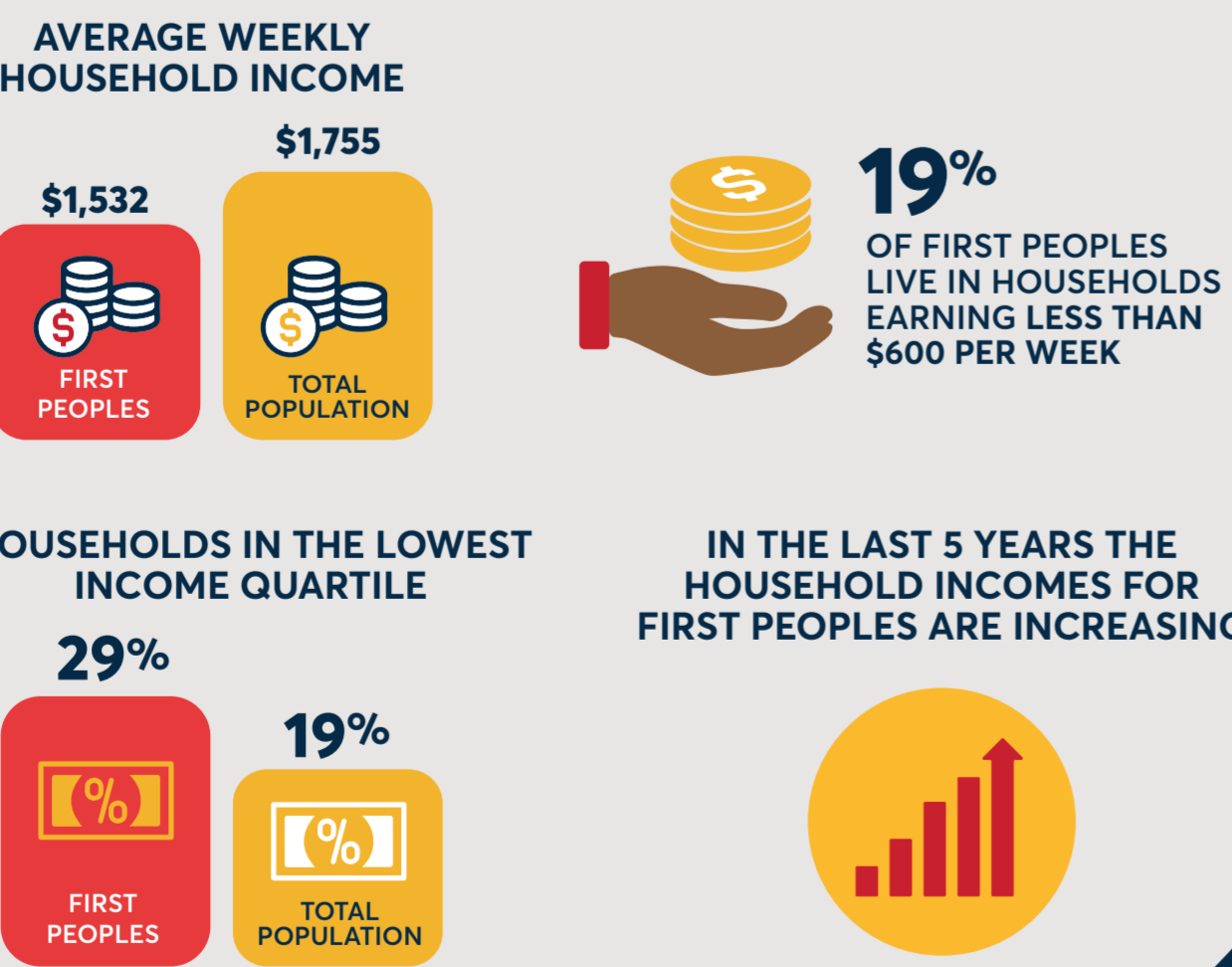
INCREASING IN PROFESSIONAL AND MANAGEMENT JOBS

	2011	2016
CLERICAL & ADMINISTRATIVE WORKERS	16%	17%
PROFESSIONALS	14%	17%
COMMUNITY & PERSONAL SERVICE WORKERS	19%	15%
TECHNICIANS & TRADE WORKERS	13%	13%
MANAGERS	9%	12%
LABOURERS	9%	9%
SALES WORKERS	8%	9%
MACHINERY OPERATORS & DRIVERS	7%	5%

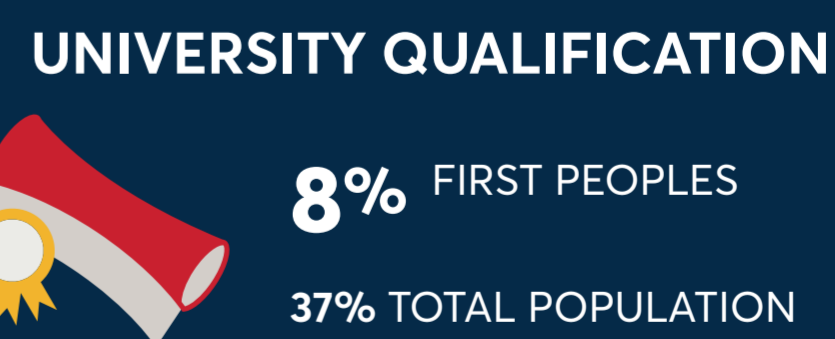
LIVE IN PARRAMATTA BUT TRAVEL ELSEWHERE FOR WORK



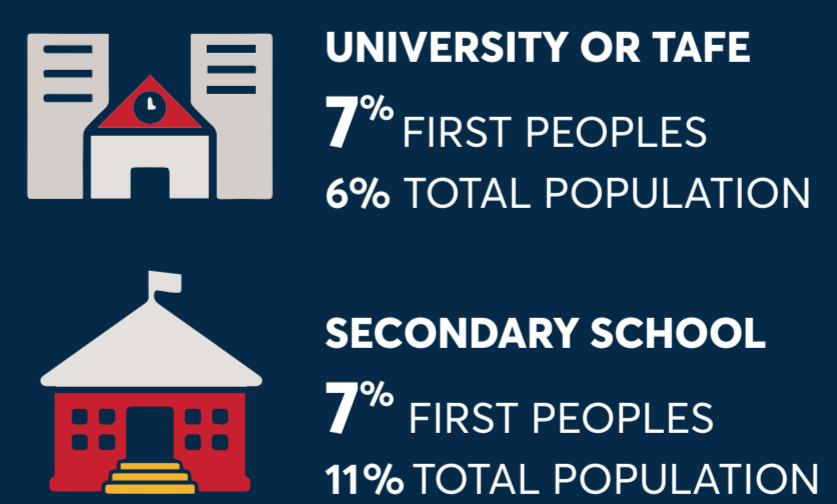
HOUSEHOLD INCOMES ARE RISING, BUT THERE IS STILL INCOME DISADVANTAGE



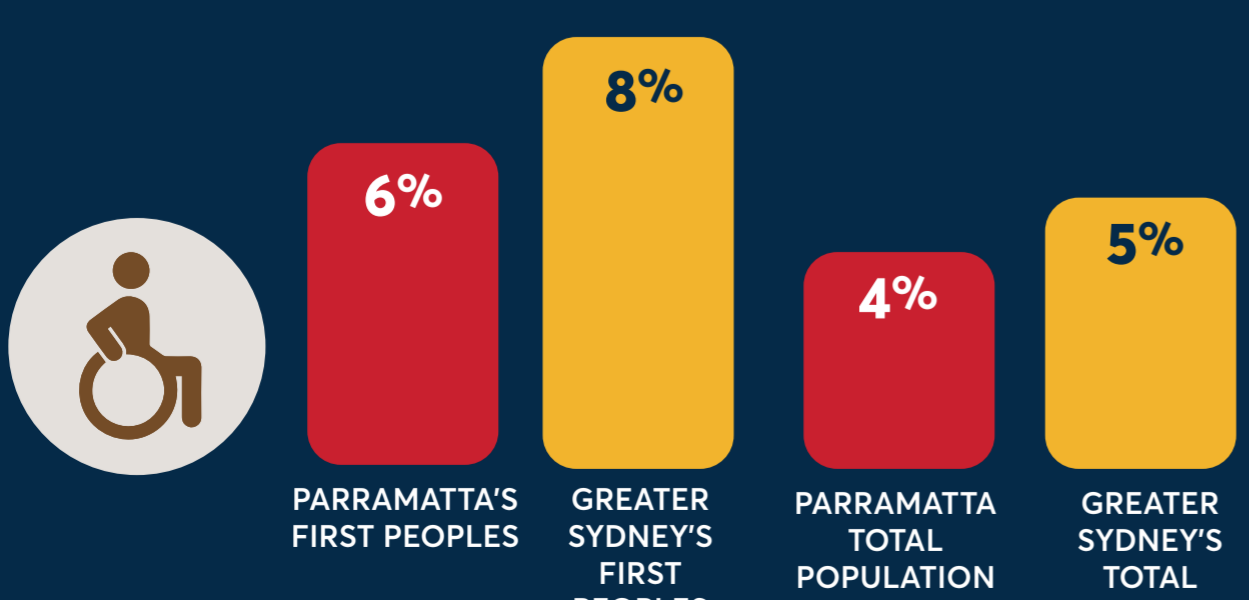
LESS LIKELY TO HAVE A UNIVERSITY QUALIFICATION, BUT THIS IS CHANGING



EDUCATION INSTITUTION ATTENDING



MORE LIKELY TO NEED ASSISTANCE WITH DAY TO DAY ACTIVITIES DUE TO DISABILITY



LESS LIKELY TO HAVE INTERNET ACCESS AT HOME

